

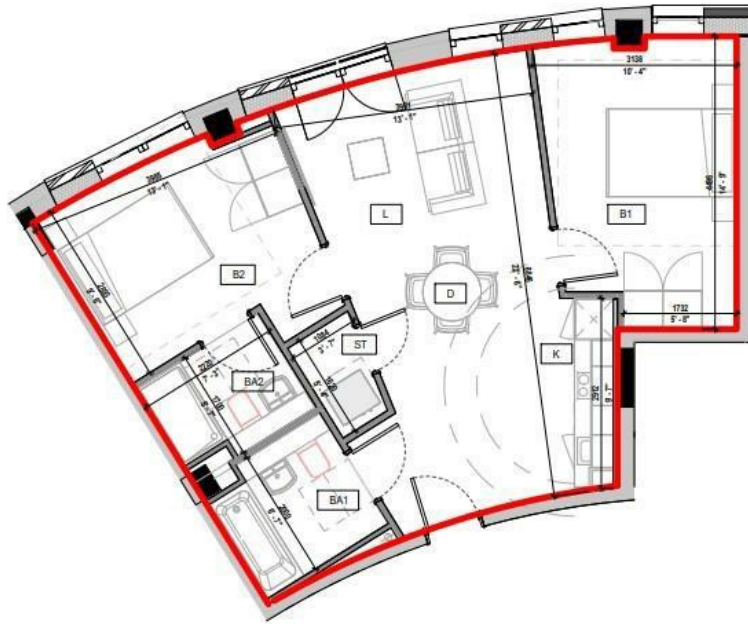
**FLAT 33 SPRINGWELL GARDENS, WHITEHALL ROAD
LEEDS, LS12 1FG**

£1,350 PER MONTH

Luxuriate in the contemporary charm of Springwell Gardens, a BRAND NEW development with fully furnished 2-bedroom apartments available for rent from February 2024. *NO DEPOSIT OPTION AVAILABLE*

MONROE

SELLERS OF THE FINEST HOMES



Note: Apartment Area and dimensions subject to Detailed Design and Construction tolerances

Springwell Gardens
Apartment - A205



Energy Efficiency Rating		Current	Potential
Very energy efficient - lower running costs			
(92 plus) A			
(81-91) B		86	86
(69-80) C			
(55-68) D			
(39-54) E			
(21-38) F			
(1-20) G			
Not energy efficient - higher running costs			
England & Wales		EU Directive 2002/91/EC	

Agents Note: Whilst every care has been taken to prepare these particulars, they are for guidance purposes only. All measurements are approximate and are for general guidance purposes only and whilst every care has been taken to ensure their accuracy, they should not be relied upon and potential buyers/tenants are advised to recheck the measurements

Monroe Lettings
Springwell Gardens Holbeck Leeds
LS12 1AF

hello@monroestateagents.com

MONROE

SELLERS OF THE FINEST HOMES