



**FLAT 62 SPRINGWELL GARDENS, SPRINGWELL ROAD
LEEDS, LS12 1FG**

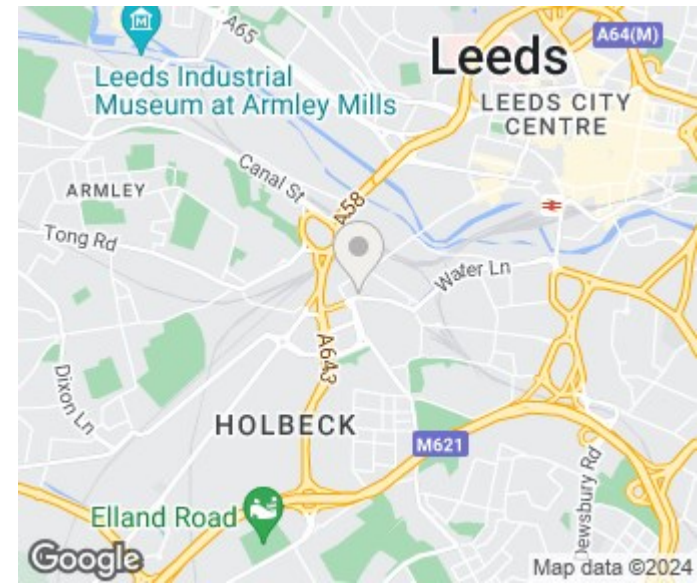
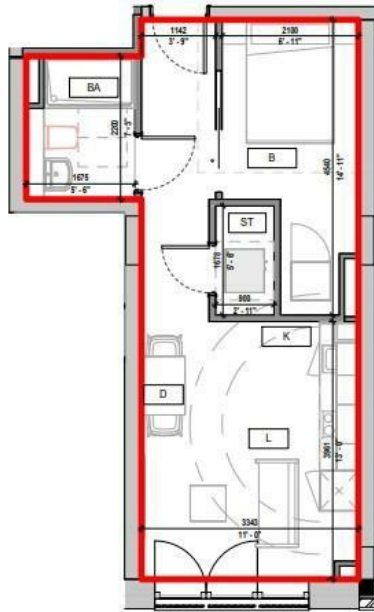
£850 PER MONTH

Experience the Unrivalled Splendor of Springwell Gardens – Your Luxurious Urban Haven!

Monroe proudly presents Springwell Gardens, a testament to opulence in a highly coveted location, with apartments available for lease starting mid-January 2024!

MONROE

SELLERS OF THE FINEST HOMES



Springwell Gardens
Apartment - A414



Energy Efficiency Rating		Current	Potential
Very energy efficient - lower running costs			
(92 plus) A		87	87
(81-91) B			
(69-80) C			
(55-68) D			
(39-54) E			
(21-38) F			
(1-20) G			
Not energy efficient - higher running costs			
England & Wales		EU Directive 2002/91/EC	

Note: Apartment Area and dimensions subject to Detailed Design and Construction tolerances

Agents Note: Whilst every care has been taken to prepare these particulars, they are for guidance purposes only. All measurements are approximate and are for general guidance purposes only and whilst every care has been taken to ensure their accuracy, they should not be relied upon and potential buyers/tenants are advised to recheck the measurements

Monroe Lettings
Springwell Gardens Holbeck Leeds
LS12 1AF

hello@monroestateagents.com

MONROE

SELLERS OF THE FINEST HOMES