

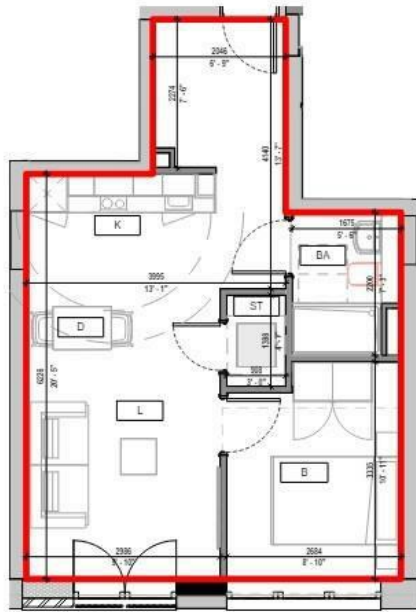
FLAT 167 SPRINGWELL GARDENS, WHITEHALL ROAD
LEEDS, LS12 1FH

£1,100 PER MONTH

Discover the epitome of urban living with our sleek and contemporary 403 sqft apartment, available now in the heart of Leeds City Centre.

MONROE

SELLERS OF THE FINEST HOMES



Springwell Gardens
Apartment - A1010



Energy Efficiency Rating		Current	Potential
Very energy efficient - lower running costs			
(92 plus) A		88	88
(81-91) B			
(69-80) C			
(55-68) D			
(39-54) E			
(21-38) F			
(1-20) G			
Not energy efficient - higher running costs			
England & Wales		EU Directive 2002/91/EC	

Note: Apartment Area and dimensions subject to Detailed Design and Construction tolerances

Agents Note: Whilst every care has been taken to prepare these particulars, they are for guidance purposes only. All measurements are approximate and are for general guidance purposes only and whilst every care has been taken to ensure their accuracy, they should not be relied upon and potential buyers/tenants are advised to recheck the measurements

Monroe Lettings
Springwell Gardens Holbeck Leeds
LS12 1AF

hello@monroestateagents.com

MONROE

SELLERS OF THE FINEST HOMES