

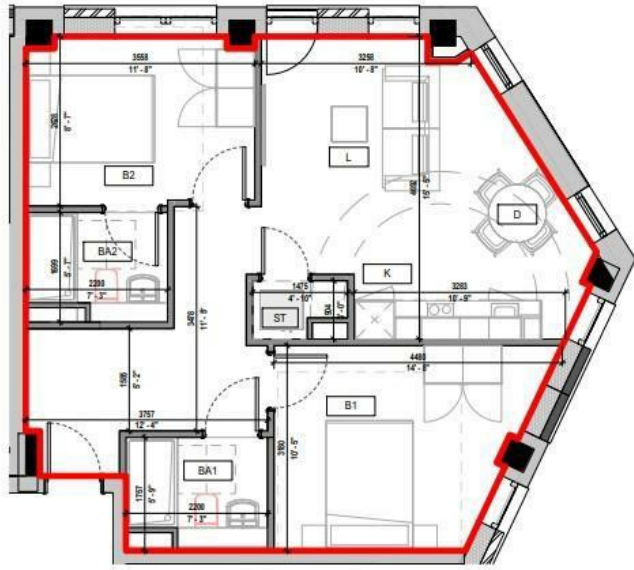
**FLAT 58 SPRINGWELL GARDENS, WHITEHALL ROAD
LEEDS, LS12 1FG**

£1,300 PER MONTH

Welcome home to luxurious living at Springwell Gardens - where comfort meets convenience in our brand-new 2-bed apartment for rent.

MONROE

SELLERS OF THE FINEST HOMES



Springwell Gardens
Apartment - A310



Note: Apartment Area and dimensions subject to Detailed Design and Construction tolerances



Energy Efficiency Rating		Current	Potential
Very energy efficient - lower running costs			
(92 plus) A			
(81-91) B		86	86
(69-80) C			
(55-68) D			
(39-54) E			
(21-38) F			
(1-20) G			
Not energy efficient - higher running costs			
England & Wales		EU Directive 2002/91/EC	

Agents Note: Whilst every care has been taken to prepare these particulars, they are for guidance purposes only. All measurements are approximate and are for general guidance purposes only and whilst every care has been taken to ensure their accuracy, they should not be relied upon and potential buyers/tenants are advised to recheck the measurements

Monroe Lettings
Springwell Gardens Holbeck Leeds
LS12 1AF

hello@monroestateagents.com

MONROE

SELLERS OF THE FINEST HOMES