



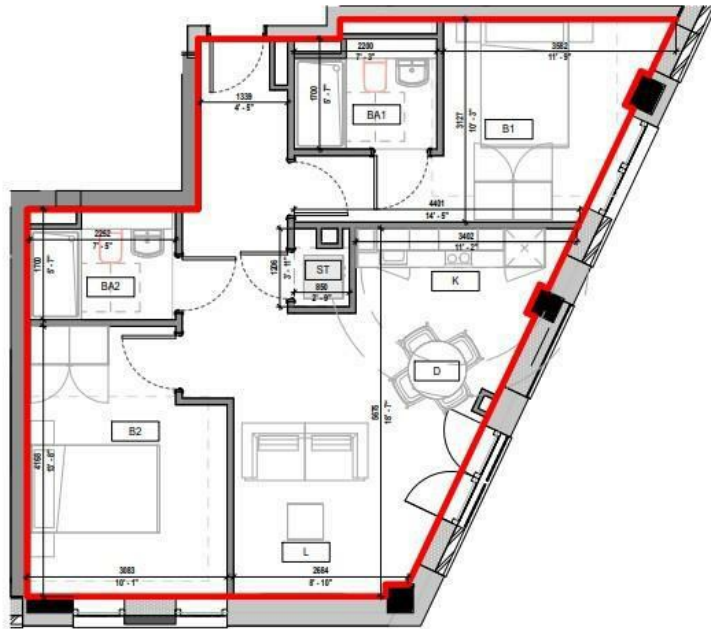
FLAT 163 SPRINGWELL GARDENS, WHITEHALL ROAD,
LEEDS, LS12 1FJ

£335,000
LEASEHOLD

BRAND NEW 2 BEDROOM APARTMENT IN THE STUNNING SPRINGWELL GARDENS DEVELOPMENT IN LEEDS CITY CENTRE JUST UNDER TEN MINUTES WALK FROM THE TRAIN STATION.

MONROE

SELLERS OF THE FINEST HOMES



Note: Apartment Area and dimensions subject to Detailed Design and Construction tolerances

Springwell Gardens
Apartment - A907



Energy Efficiency Rating		Current	Potential
Very energy efficient - lower running costs			
(92 plus) A		87	87
(81-91) B			
(69-80) C			
(55-68) D			
(39-54) E			
(21-38) F			
(1-20) G			
Not energy efficient - higher running costs			
England & Wales		EU Directive 2002/91/EC	

Agents Note: Whilst every care has been taken to prepare these particulars, they are for guidance purposes only. All measurements are approximate and are for general guidance purposes only and whilst every care has been taken to ensure their accuracy, they should not be relied upon and potential buyers/tenants are advised to recheck the measurements

Leeds City Centre
Springwell Gardens Holbeck Leeds
LS12 1AF

citycentre@monroestateagents.com

MONROE

SELLERS OF THE FINEST HOMES