



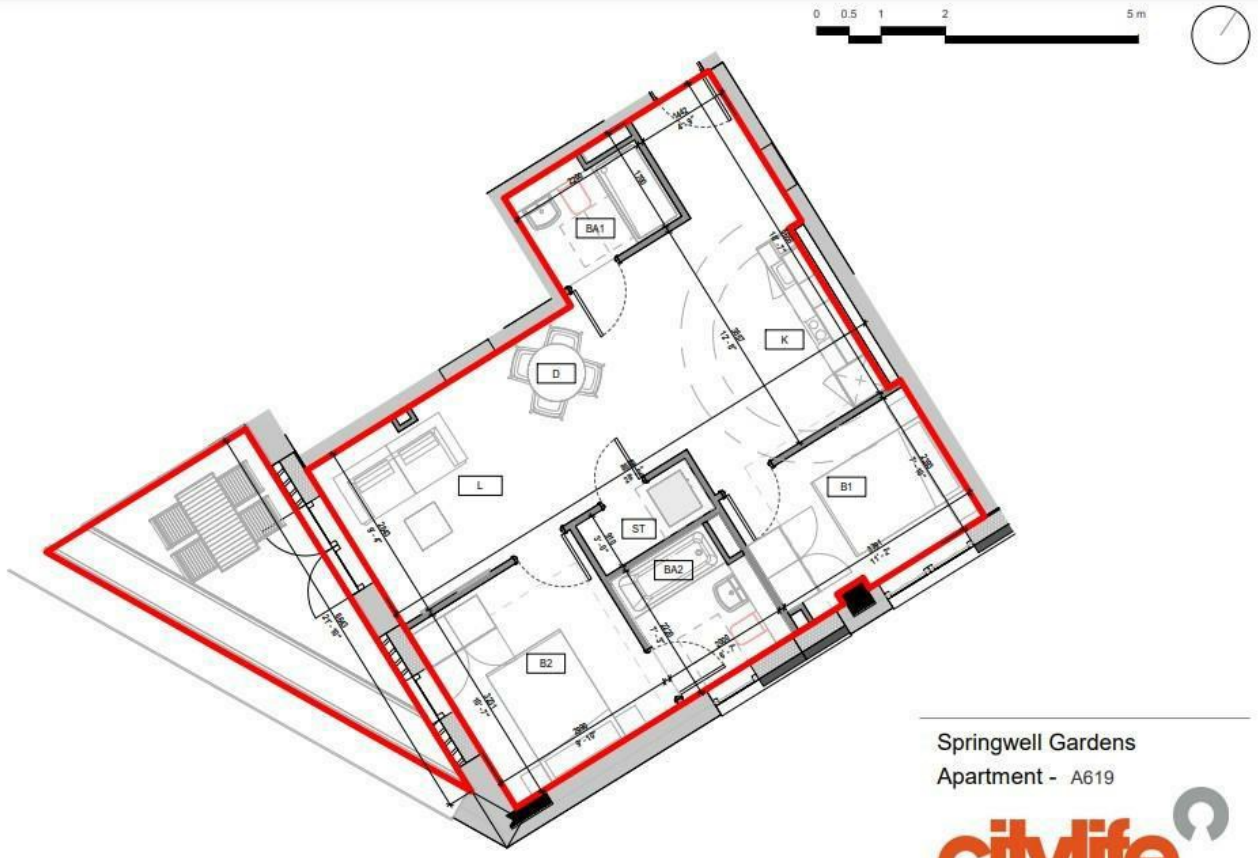
FLAT 108 SPRINGWELL GARDENS, WHITEHALL ROAD
LEEDS, LS12 1AW

£1,600 PER MONTH

Discover elevated living at Springwell Gardens with our sophisticated two-bedroom apartments, available for rent in 2024.

MONROE

SELLERS OF THE FINEST HOMES



Note: Apartment Area and dimensions subject to Detailed Design and Construction tolerances

Springwell Gardens
Apartment - A619



Energy Efficiency Rating		
	Current	Potential
Very energy efficient - lower running costs		
(92 plus) A		
(81-91) B	87	87
(69-80) C		
(55-68) D		
(39-54) E		
(21-38) F		
(1-20) G		
Not energy efficient - higher running costs		
England & Wales	EU Directive 2002/91/EC	

Agents Note: Whilst every care has been taken to prepare these particulars, they are for guidance purposes only. All measurements are approximate and are for general guidance purposes only and whilst every care has been taken to ensure their accuracy, they should not be relied upon and potential buyers/tenants are advised to recheck the measurements

Monroe Lettings
Springwell Gardens Holbeck Leeds
LS12 1AF

hello@monroestateagents.com

MONROE

SELLERS OF THE FINEST HOMES