



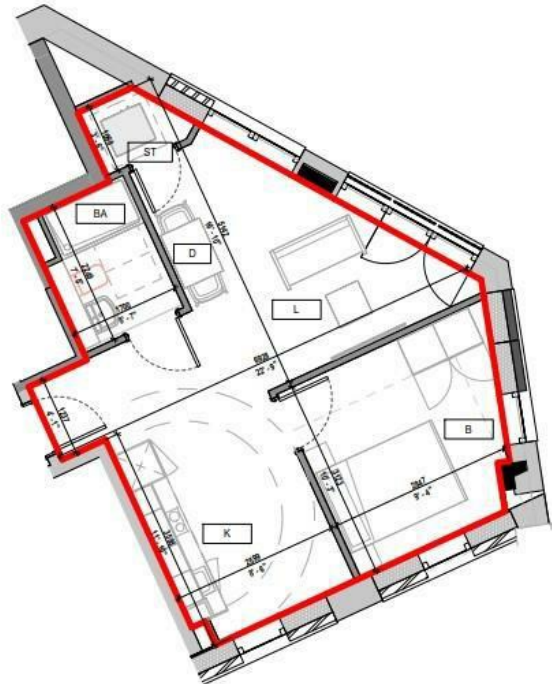
FLAT 222 SPRINGWELL GARDENS, SPRINGWELL ROAD  
LEEDS, LS12 1FL

£975 PER MONTH

Experience refined urban living in a stylish 1-bedroom apartment at Springwell Gardens, available now, offering contemporary design, convenience, and elegance curated for modern lifestyles.

MONROE

SELLERS OF THE FINEST HOMES



Note: Apartment Area and dimensions subject to Detailed Design and Construction tolerances

Springwell Gardens  
Apartment - A423



Energy Efficiency Rating		
	Current	Potential
Very energy efficient - lower running costs		
(92 plus) <b>A</b>		
(81-91) <b>B</b>	<b>86</b>	<b>86</b>
(69-80) <b>C</b>		
(55-68) <b>D</b>		
(39-54) <b>E</b>		
(21-38) <b>F</b>		
(1-20) <b>G</b>		
Not energy efficient - higher running costs		
<b>England &amp; Wales</b>	EU Directive 2002/91/EC	

Agents Note: Whilst every care has been taken to prepare these particulars, they are for guidance purposes only. All measurements are approximate and are for general guidance purposes only and whilst every care has been taken to ensure their accuracy, they should not be relied upon and potential buyers/tenants are advised to recheck the measurements

Monroe Lettings  
Springwell Gardens Holbeck Leeds  
LS12 1AF

hello@monroestateagents.com

MONROE

SELLERS OF THE FINEST HOMES