



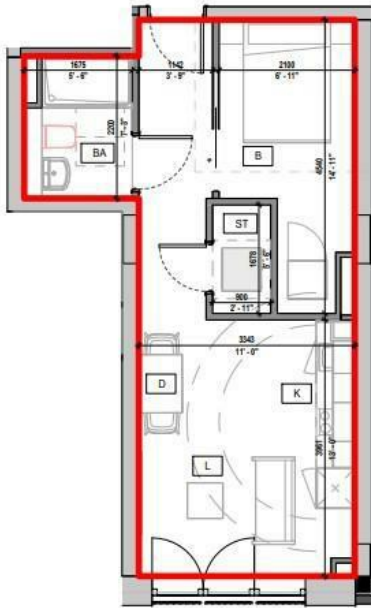
**FLAT 22 SPRINGWELL GARDENS, SPRINGWELL ROAD
LEEDS, LS12 1FG**

£875 PER MONTH

Experience the allure of Springwell Gardens in this brand new, unfurnished 1-bed apartment, now with 50% off your first month's rent!

MONROE

SELLERS OF THE FINEST HOMES



Note: Apartment Area and dimensions subject to Detailed Design and Construction tolerances

Springwell Gardens
Apartment - A214



Energy Efficiency Rating		Current	Potential
Very energy efficient - lower running costs			
(92 plus) A		87	87
(81-91) B			
(69-80) C			
(55-68) D			
(39-54) E			
(21-38) F			
(1-20) G			
Not energy efficient - higher running costs			
England & Wales		EU Directive 2002/91/EC	

Agents Note: Whilst every care has been taken to prepare these particulars, they are for guidance purposes only. All measurements are approximate and are for general guidance purposes only and whilst every care has been taken to ensure their accuracy, they should not be relied upon and potential buyers/tenants are advised to recheck the measurements

Monroe Lettings
Springwell Gardens Leeds
LS12 1AF

hello@monroestateagents.com

MONROE

SELLERS OF THE FINEST HOMES