



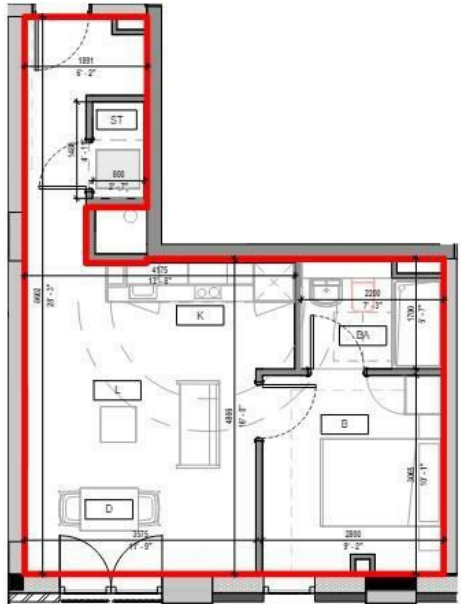
FLAT 177 SPRINGWELL GARDENS, WHITEHALL ROAD
LEEDS, LS12 1FJ

£1,100 PER MONTH

Secure your spot in the luxurious Springwell Gardens with our enticing offer: sign up now for a 1-bed unfurnished apartment and receive a £250 Dunelm Gift Card as our welcome gift!"

MONROE

SELLERS OF THE FINEST HOMES



Springwell Gardens
 Apartment - A1107



Energy Efficiency Rating		Current	Potential
Very energy efficient - lower running costs			
(92 plus) A		87	87
(81-91) B			
(69-80) C			
(55-68) D			
(39-54) E			
(21-38) F			
(1-20) G			
Not energy efficient - higher running costs			
England & Wales		EU Directive 2002/91/EC	

Note: Apartment Area and dimensions subject to Detailed Design and Construction tolerances

Agents Note: Whilst every care has been taken to prepare these particulars, they are for guidance purposes only. All measurements are approximate and are for general guidance purposes only and whilst every care has been taken to ensure their accuracy, they should not be relied upon and potential buyers/tenants are advised to recheck the measurements

Monroe Lettings
 Springwell Gardens Holbeck Leeds
 LS12 1AF

hello@monroestateagents.com

MONROE

SELLERS OF THE FINEST HOMES