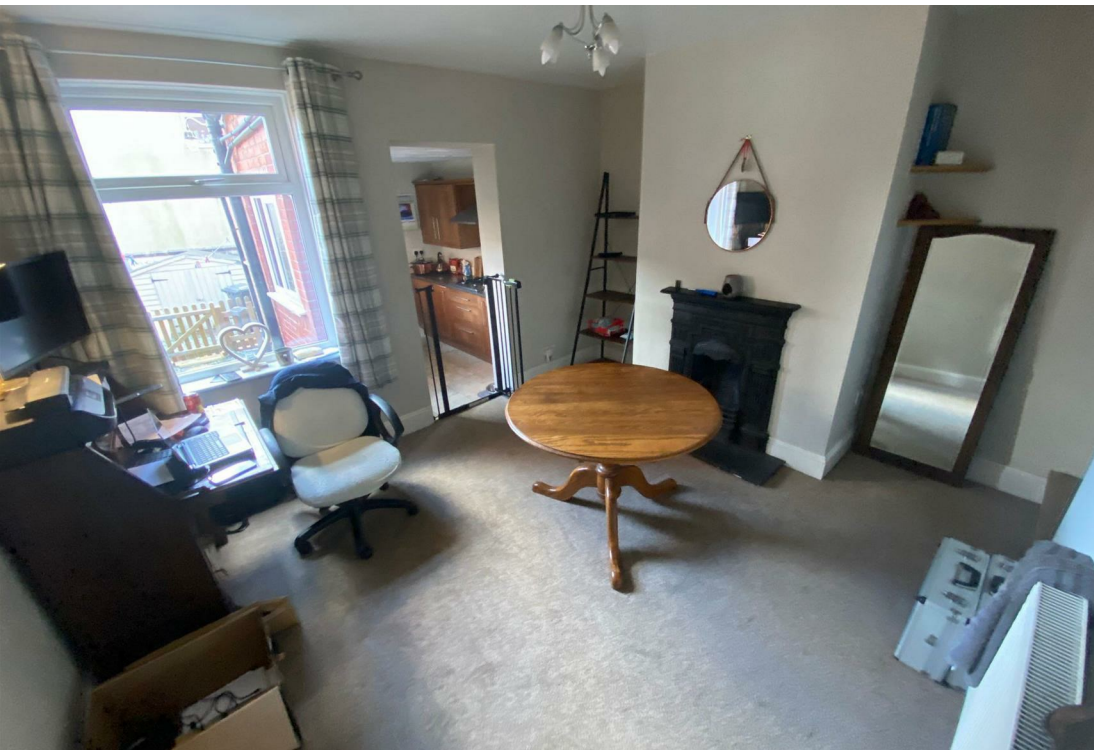


6 New Street, Uttoxeter, ST14 7QS

£825 PCM

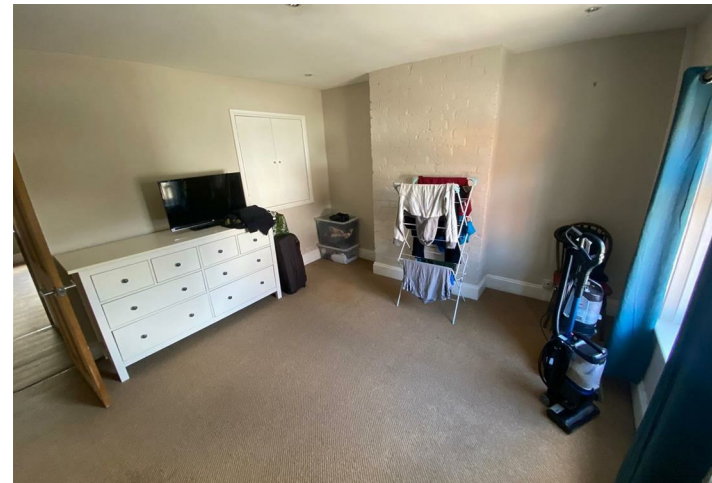
 **ABODE**
SALES & LETTINGS





ABODE Lettings are excited to offer this spacious and contemporary terrace house now available in the Market Town of Uttoxeter. This property boasts a welcoming lounge, a dining room featuring a charming fireplace, a modern kitchen complete with integrated oven, hob, and extractor, a convenient downstairs WC with a designated laundry area and plumbing for a washing machine. Upstairs, you'll find two generously sized double bedrooms and a stylishly appointed bathroom. Additional benefits include gas central heating and double-glazed windows, ensuring comfort and energy efficiency.

Call ABODE to arrange your viewing.







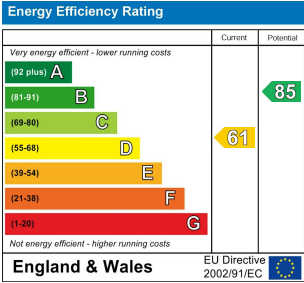
Floor Plans



Location Map



Energy Performance Graph



Please contact our Burton Lettings Office on 01283 845888 if you wish to arrange a viewing appointment for this property or require further information.

The particulars are set out as a general outline only for the guidance of intended purchasers or lessees, and do not constitute, any part of a contract. Nothing in these particulars shall be deemed to be a statement that the property is in good structural condition or otherwise nor that any of the services, appliances, equipment or facilities are in good working order. Purchasers should satisfy themselves of this prior to purchasing.