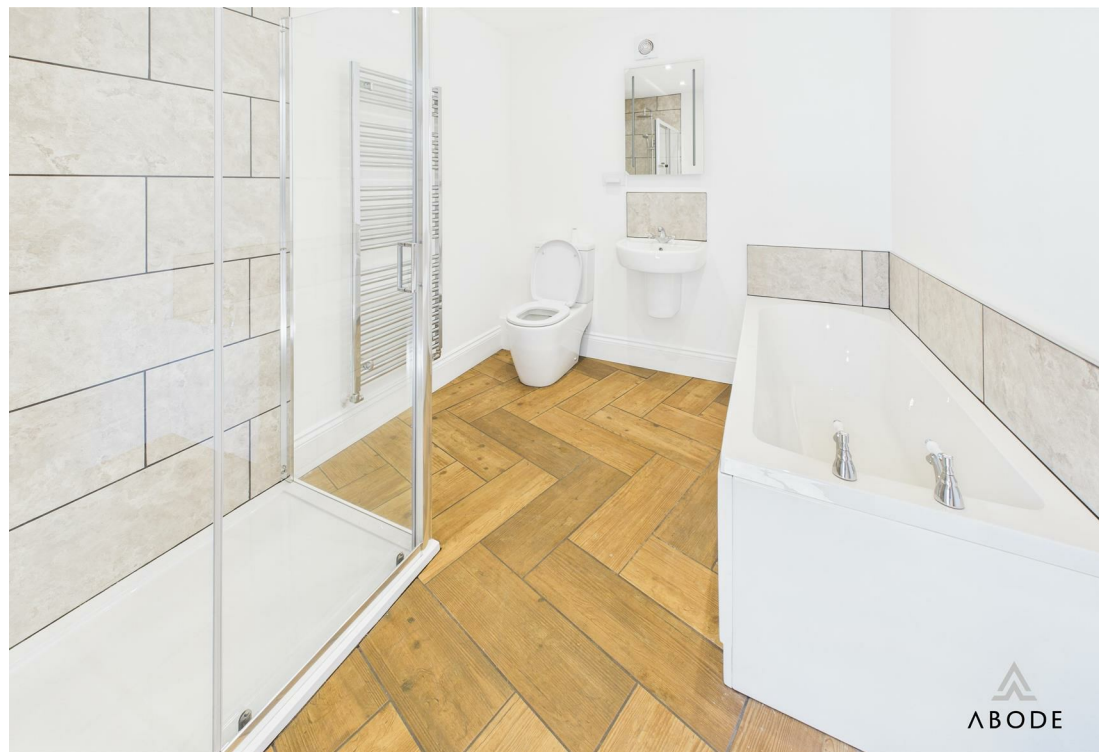


The Granary Barn Stone Road, Uttoxeter, ST14 5BG

£1,450 PCM









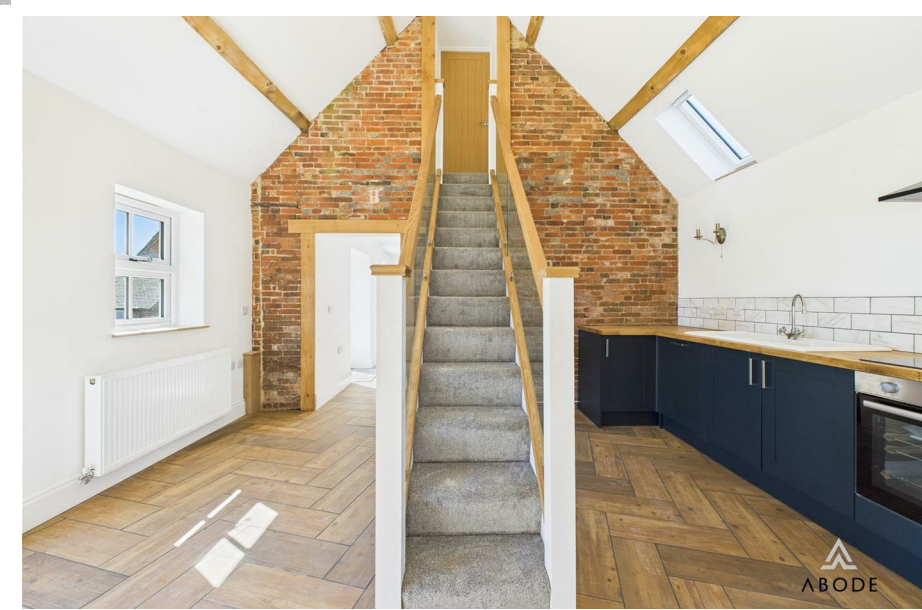
ABODE Lettings are pleased to offer for long term rental, this fabulous barn conversion - Brand new & ready to go!

Nestled in the charming village of Bramshall, near Uttoxeter, this delightful barn conversion offers a unique blend of rustic charm and modern living. With three well-proportioned bedrooms, this property is perfect for families or those seeking a peaceful retreat. The spacious reception room provides an inviting space for relaxation and entertaining, making it the heart of the home.

The barn conversion has been thoughtfully designed to retain its original character while incorporating contemporary comforts. The open-plan layout allows for an abundance of natural light, creating a warm and welcoming atmosphere throughout. The property features a well-appointed bathroom, ensuring convenience for all residents.

One of the standout features of this home is the ample parking space, accommodating up to five vehicles, which is a rare find in such a picturesque setting. This makes it ideal for families with multiple cars or for those who enjoy hosting guests.

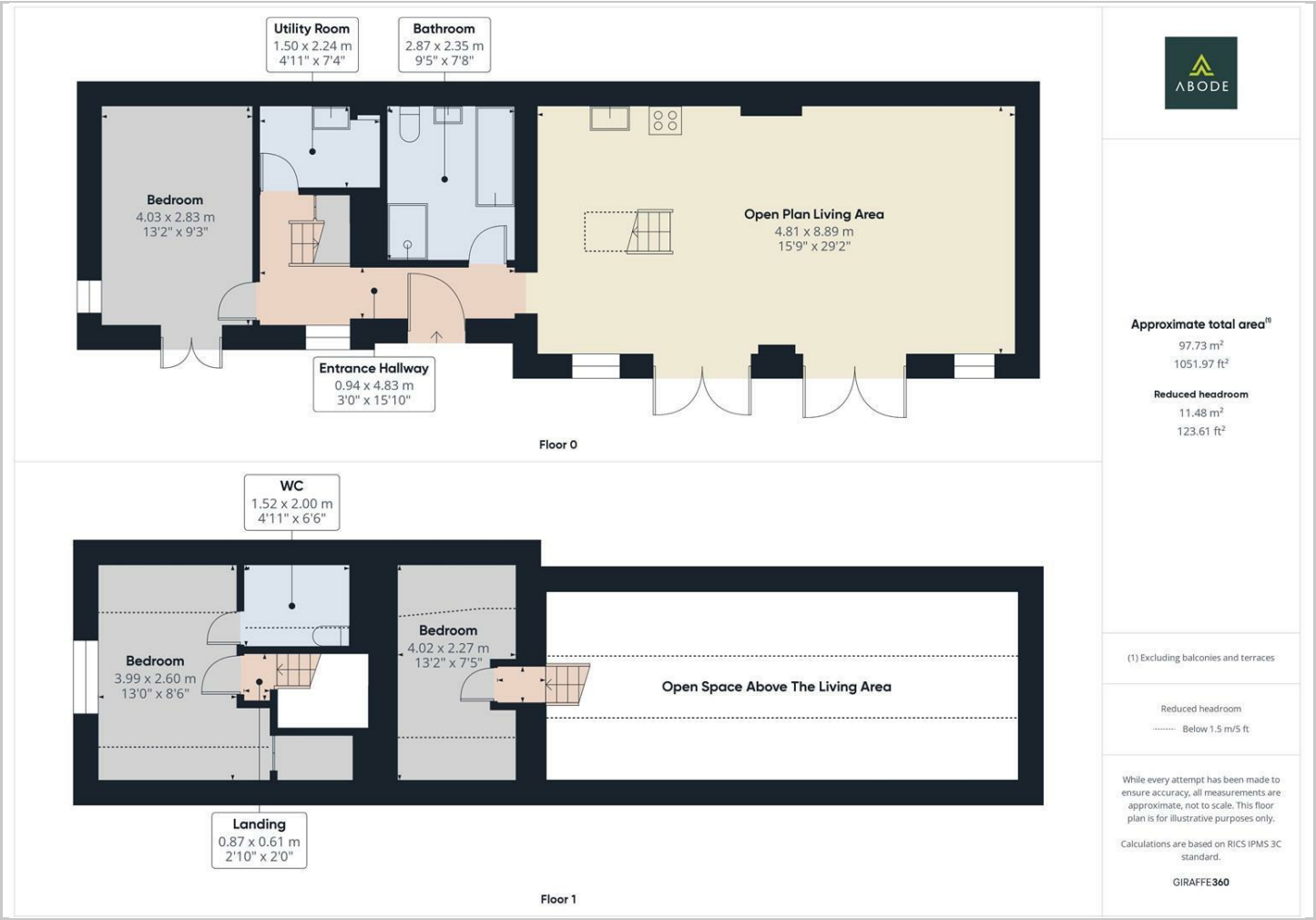








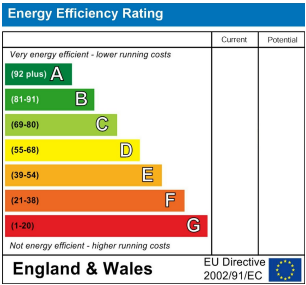
Floor Plans



Location Map



Energy Performance Graph



Please contact our Burton Lettings Office on 01283 845888 if you wish to arrange a viewing appointment for this property or require further information.

The particulars are set out as a general outline only for the guidance of intended purchasers or lessees, and do not constitute, any part of a contract. Nothing in these particulars shall be deemed to be a statement that the property is in good structural condition or otherwise nor that any of the services, appliances, equipment or facilities are in good working order. Purchasers should satisfy themselves of this prior to purchasing.