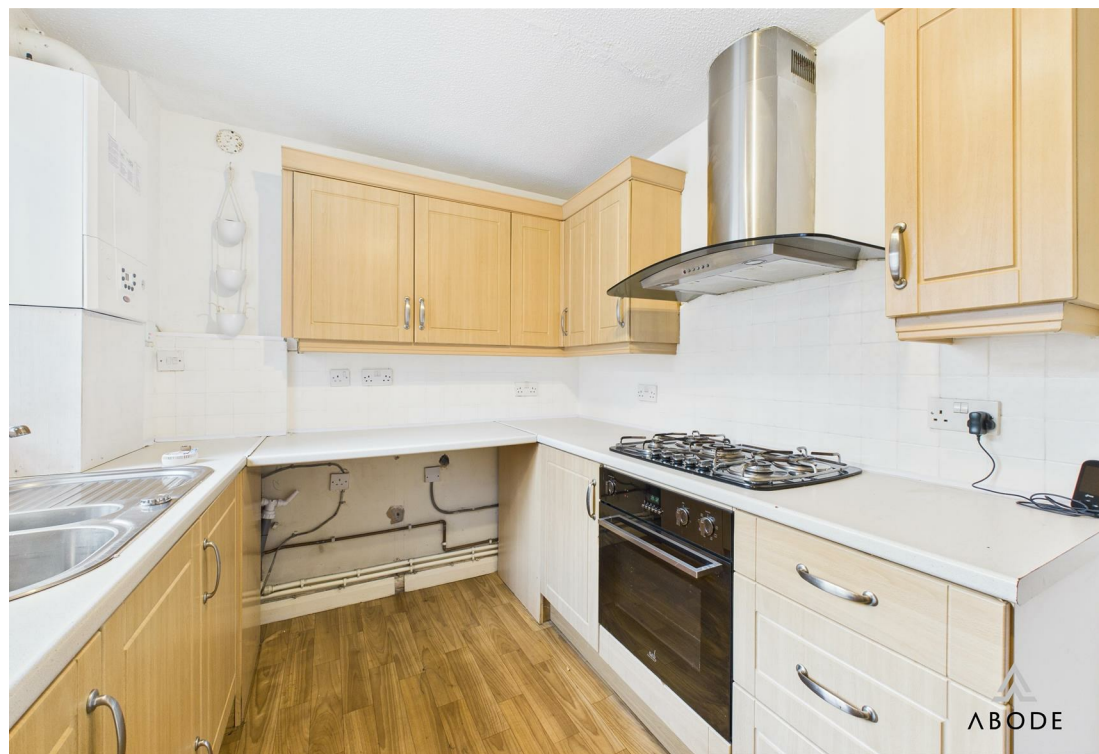


8 Queen Elizabeth Court, Ashbourne, DE6 INE

£760 PCM









ABODE Lettings are pleased to offer for long term rental this modern two bedroom house, situated within walking distance of Ashbourne Town Centre.

Good size kitchen with a good selection of wall and base units - Integrated oven/hob. Gas central heating.

Lounge/diner (4.44m x 4.20m) - With rear access door.

Two good size bedrooms situated to the first floor with large built in double wardrobe - Useful storage cupboard off the landing area.

Bathroom with white three piece suite - Mains fed shower over the bath with glass screen.







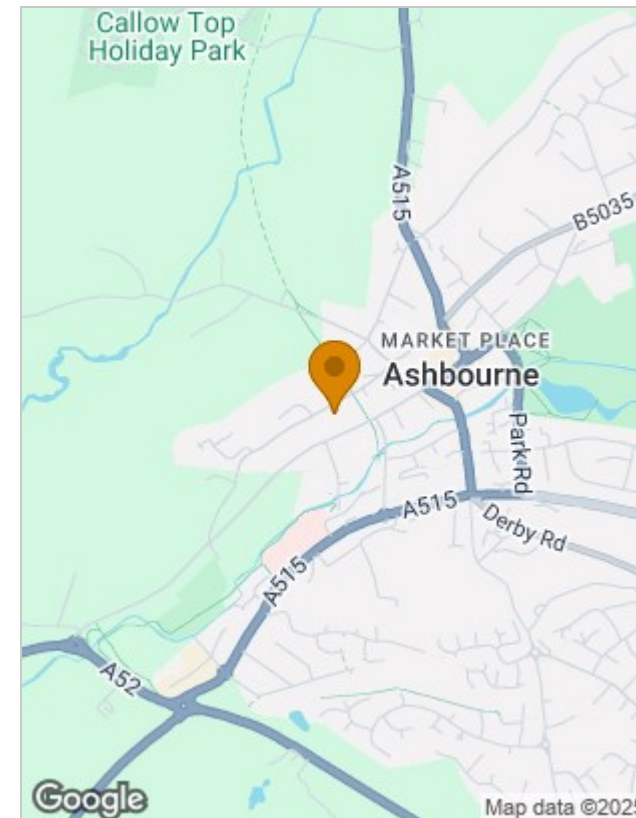




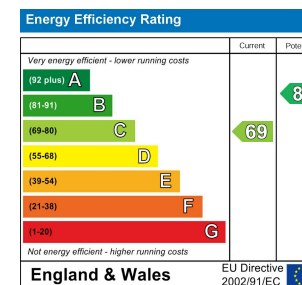
## Floor Plans



## Location Map



## Energy Performance Graph



Please contact our Burton Lettings Office on 01283 845888  
if you wish to arrange a viewing appointment for this property or require further information.

The particulars are set out as a general outline only for the guidance of intended purchasers or lessees, and do not constitute, any part of a contract. Nothing in these particulars shall be deemed to be a statement that the property is in good structural condition or otherwise nor that any of the services, appliances, equipment or facilities are in good working order. Purchasers should satisfy themselves of this prior to purchasing.

102 High Street, Burton-On-Trent, Staffordshire, DE14 1LJ  
Tel: 01283 845888 Email: [lettings@abodemidlands.co.uk](mailto:lettings@abodemidlands.co.uk) <https://www.abodemidlands.co.uk>