

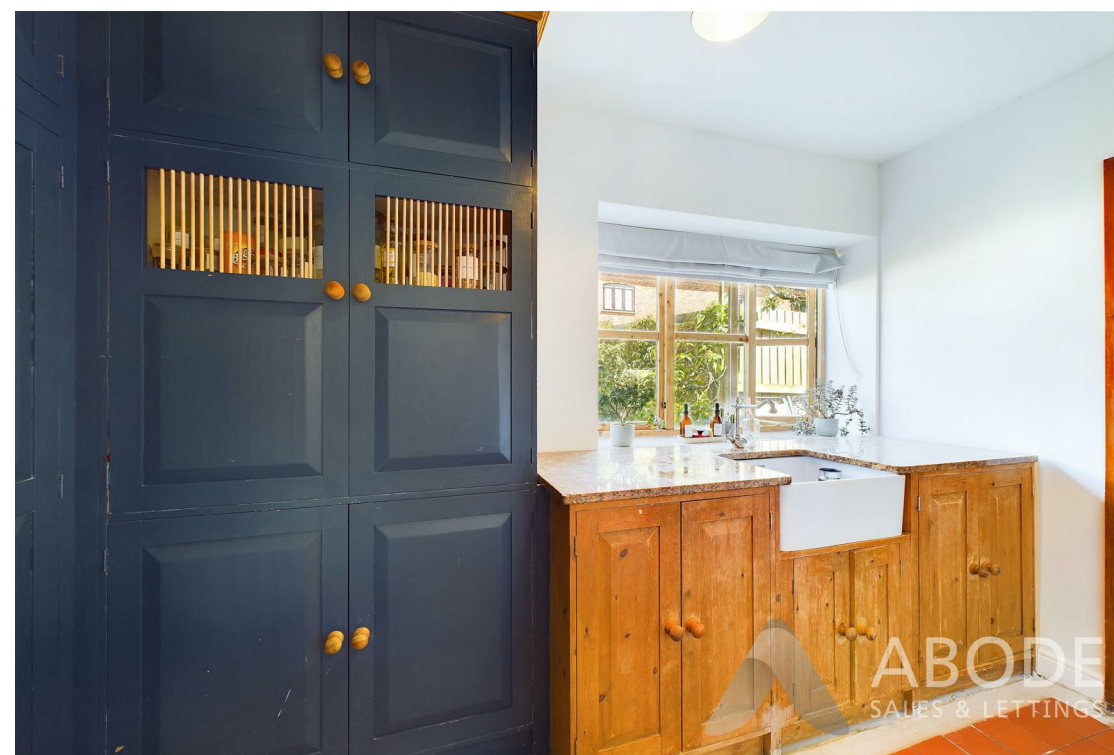
High Tree Farm, Hobb Lane, Uttoxeter, ST14 8RQ

£1,565 PCM

 **ABODE**
SALES & LETTINGS



 **ABODE**
SALES & LETTINGS



ABODE Lettings are pleased to offer for the first time this charming rental property is ideal for couples and families, offering a peaceful rural setting with convenient access to Abbots Bromley, Marchington, and Uttoxeter. Major roadways like the A50 & A38 and nearby train stations, including Trent Valley, provide easy routes for commuters.

The home features a welcoming hallway with hardwood floors leading to spacious living areas. The main living room has a part-vaulted ceiling with exposed beams, a cosy fireplace with a cast log burner, and patio doors that offer stunning countryside views. The large dining kitchen is equipped with granite countertops, an electric hob, and bi-fold doors that open to the garden. A utility room with built-in storage and a guest WC adds convenience.

The property includes two double bedrooms, each with an en-suite shower room, and a versatile third bedroom that can serve as a study or sitting room. The family bathroom is stylishly fitted with a white three-piece suite.

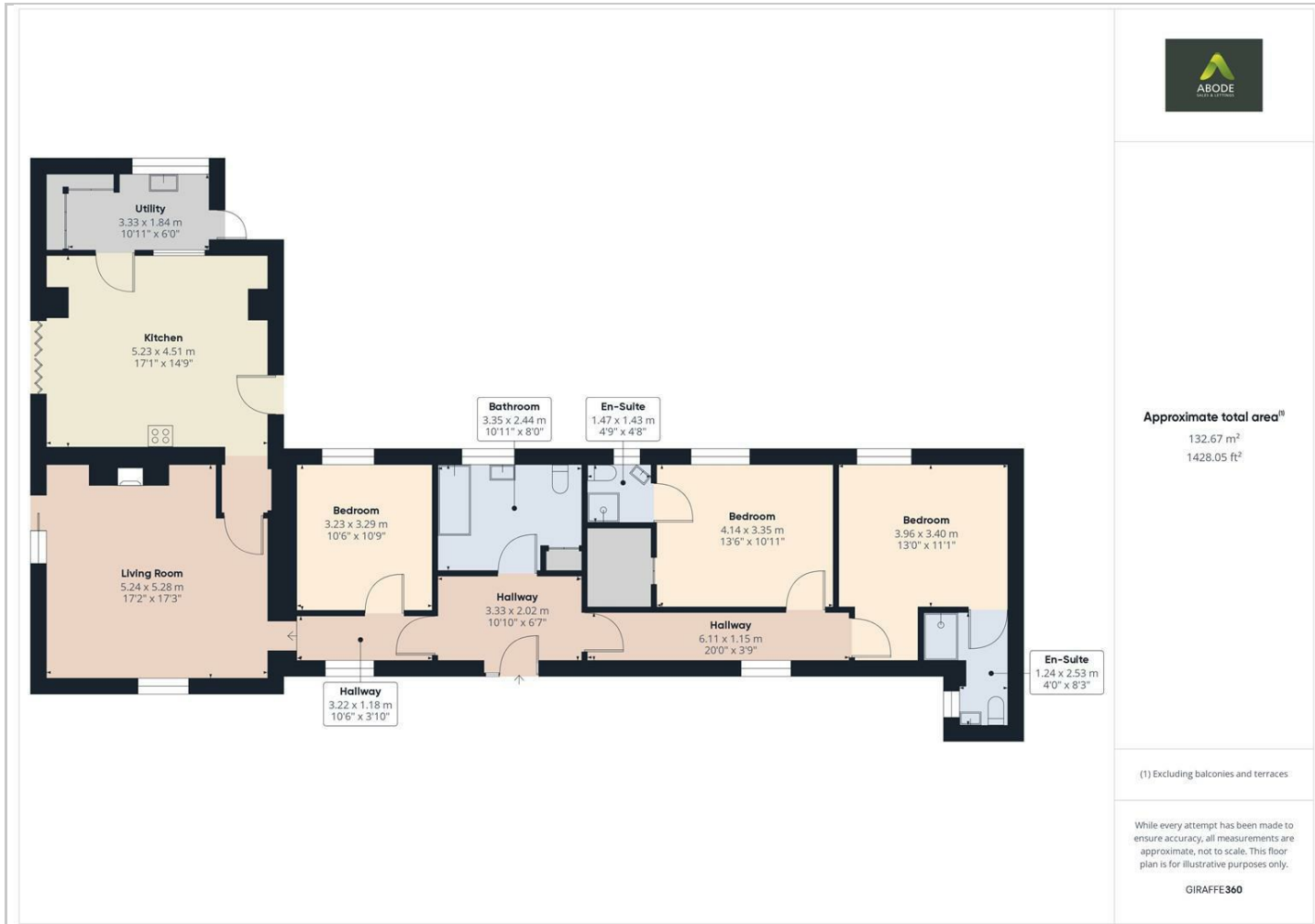
Outside, the property boasts a front lawn, side seating areas with beautiful views, and an enclosed gravel courtyard at the rear. A timber gate leads to a gravel driveway with ample off-road parking.



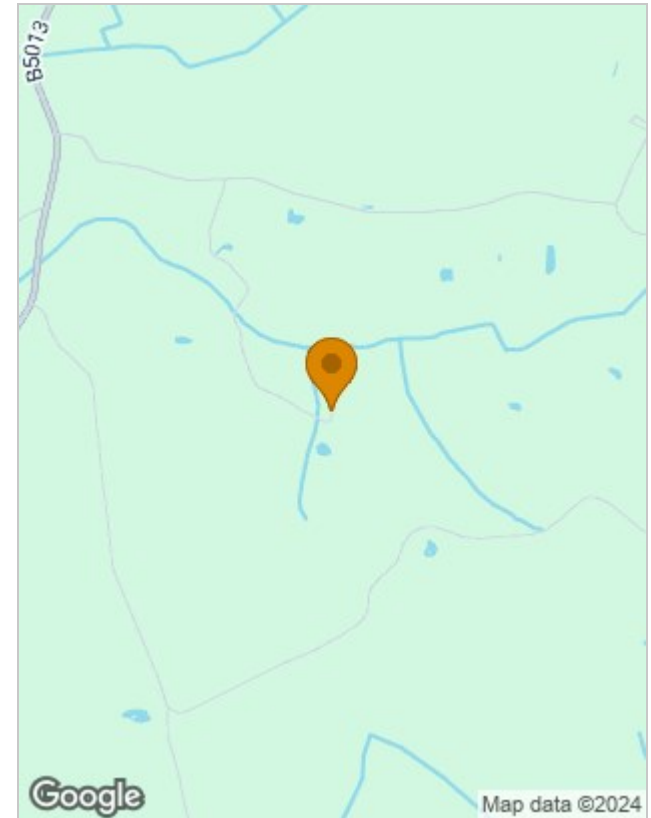




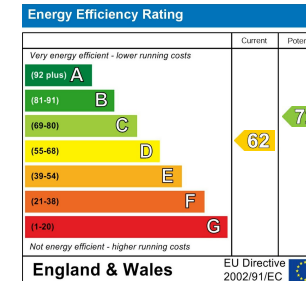
Floor Plans



Location Map



Energy Performance Graph



Please contact our Burton Lettings Office on 01283 845888 if you wish to arrange a viewing appointment for this property or require further information.

The particulars are set out as a general outline only for the guidance of intended purchasers or lessees, and do not constitute, any part of a contract. Nothing in these particulars shall be deemed to be a statement that the property is in good structural condition or otherwise nor that any of the services, appliances, equipment or facilities are in good working order. Purchasers should satisfy themselves of this prior to purchasing.