

53 Panama Road, Burton Upon Trent, DE13 0SQ

£950 PCM

 **ABODE**
SALES & LETTINGS





ABODE Lettings are pleased to offer for rental this three bedroom family home, situated on the edge of Horninglow, Burton.

This is a rare opportunity to secure a well presented family home in a much sought after location which offers superb local amenities including schooling, leisure activities and road links.

In brief, the accommodation provides - Large kitchen/diner with a great selection of wall and base units. Good size lounge. Downstairs cloakroom with low level WC and basin.

The first floor provides two double size bedrooms and further single bedroom. These rooms are serviced by a family bathroom and En-suite facilities.

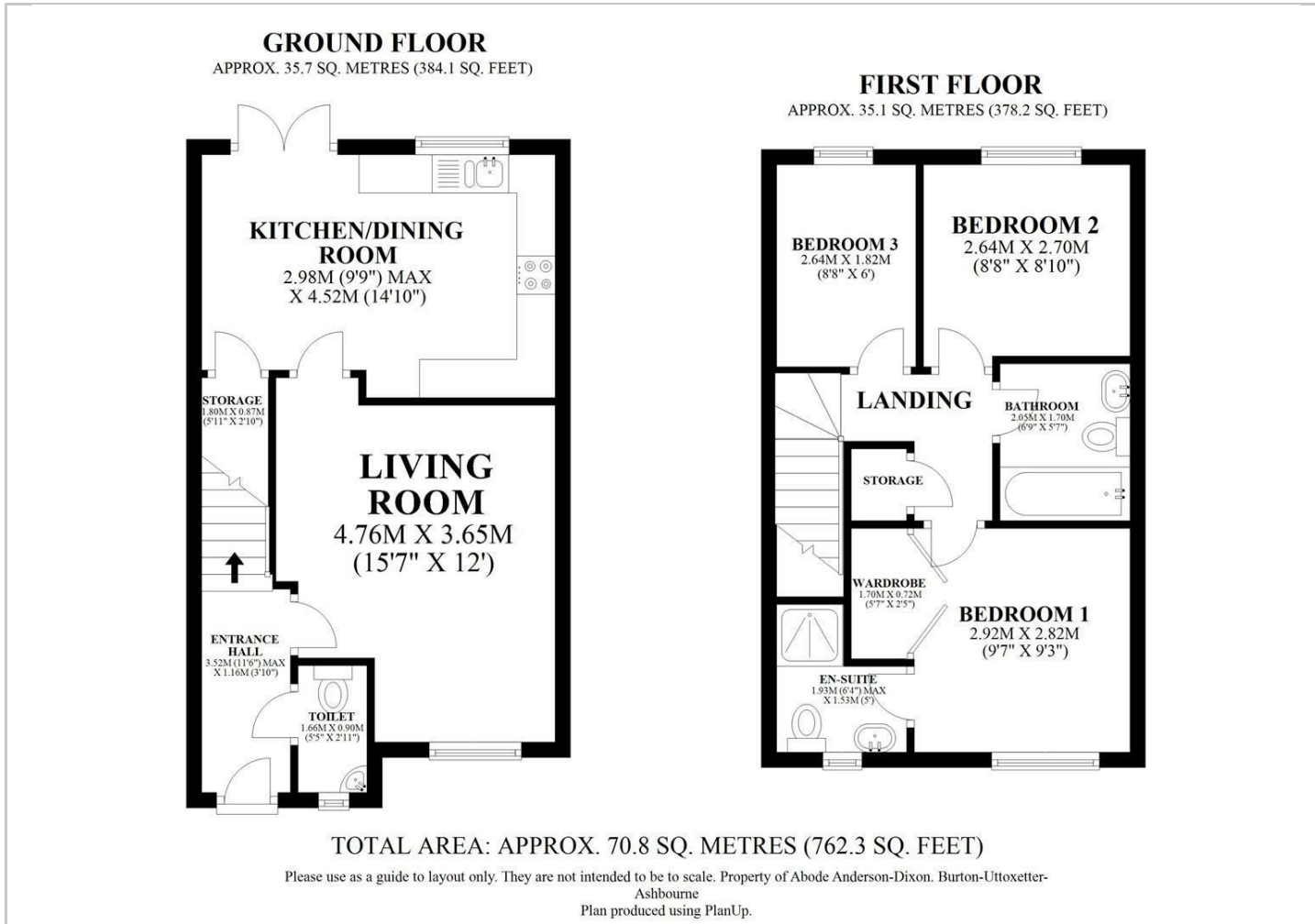
A good sized rear garden with decking and lawn complete the rear garden.



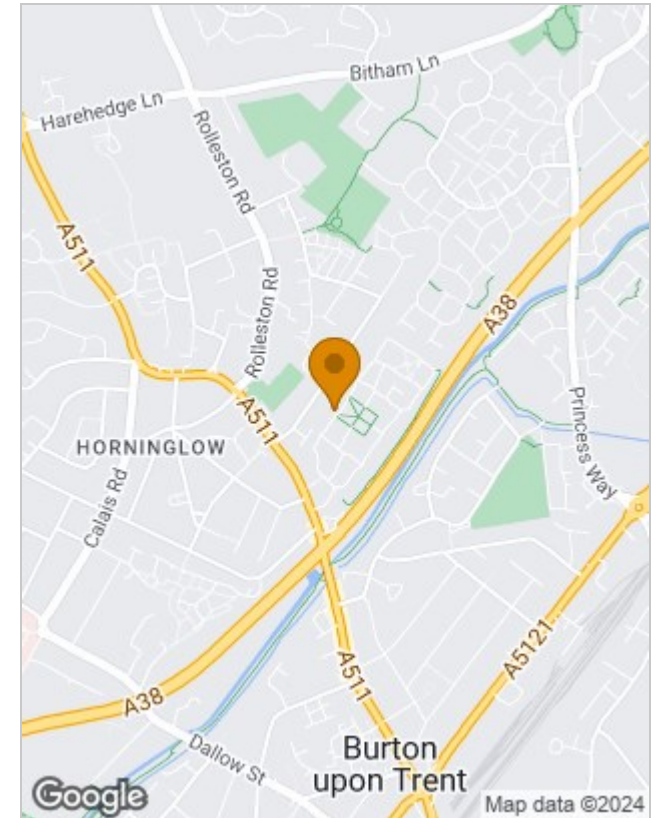




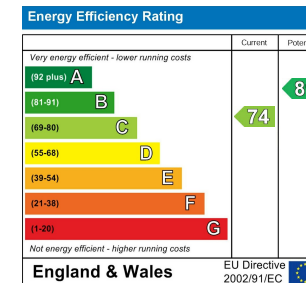
Floor Plans



Location Map



Energy Performance Graph



Please contact our Burton Lettings Office on 01283 845888 if you wish to arrange a viewing appointment for this property or require further information.

The particulars are set out as a general outline only for the guidance of intended purchasers or lessees, and do not constitute, any part of a contract. Nothing in these particulars shall be deemed to be a statement that the property is in good structural condition or otherwise nor that any of the services, appliances, equipment or facilities are in good working order. Purchasers should satisfy themselves of this prior to purchasing.