

3 Glamis Close, DE13 0HX

£595 PCM

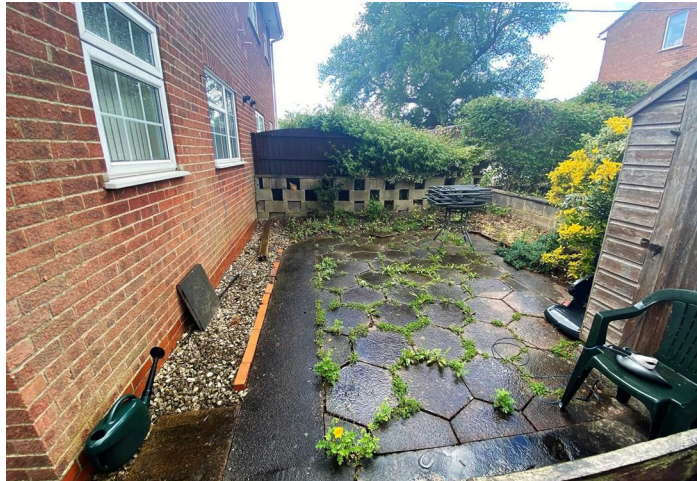




ABODE are pleased to offer this One Bedroom Ground Floor Apartment in the well sought after village of Stretton. The property comprises of; One large double bedroom with built in wardrobes, Bathroom with shower over the bath, Fitted kitchen with space for appliances, Large living room with neutral décor. Call ABODE on 01283 845888 to view!

#### DESCRIPTION

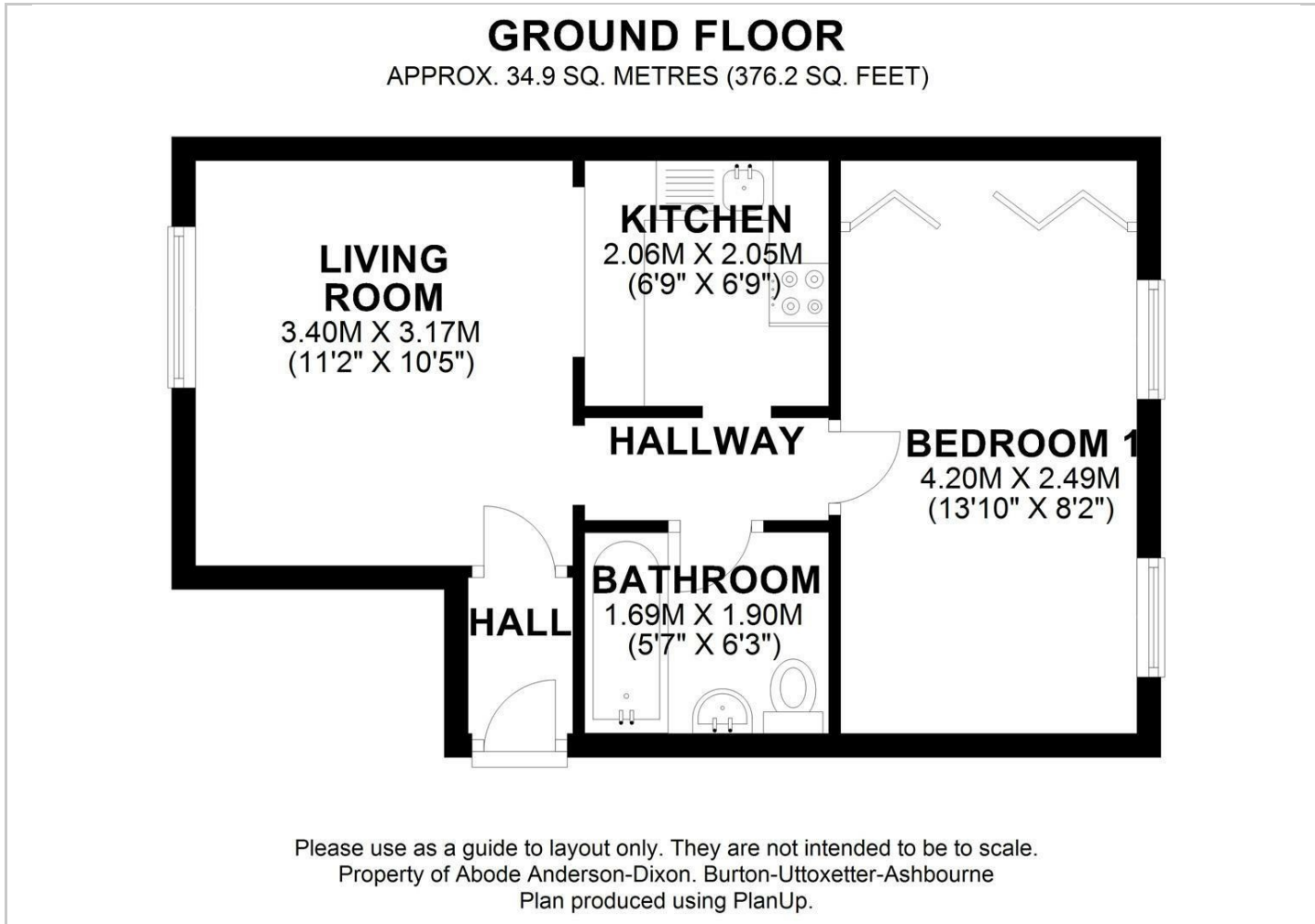
ABODE are please to offer for the first time this One Bedroom Ground Floor Apartment in the well sort after village of Stretton. The property comprises of; One large double bedroom with built in wardrobes, Bathroom with shower over the bath, Fitted kitchen with space for appliances, Large living room with neutral décor. Call ABODE on 01283 845888 to view!



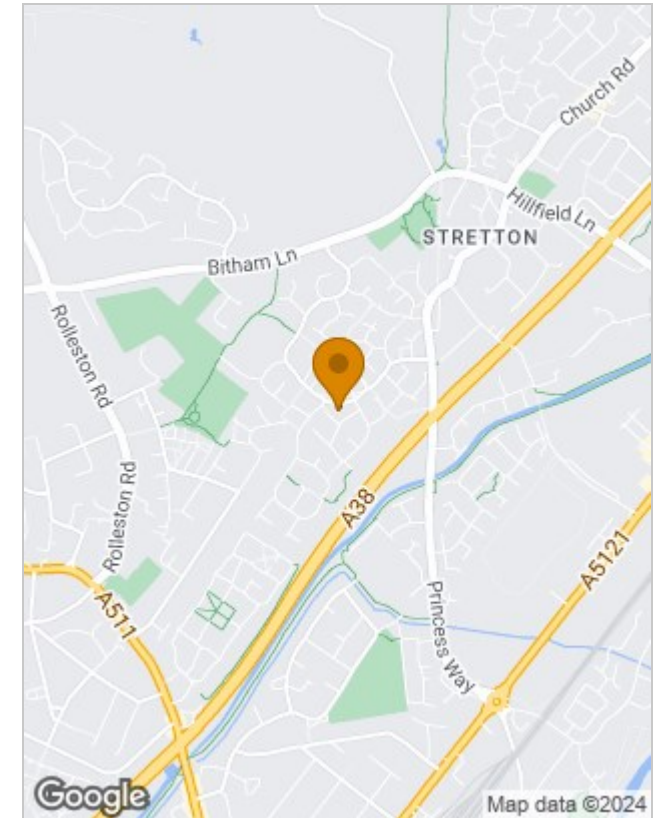





Floor Plans



Location Map



Energy Performance Graph

Energy Efficiency Rating		
	Current	Potential
Very energy efficient - lower running costs		
(92 plus) <b>A</b>		
(81-91) <b>B</b>		
(69-80) <b>C</b>		
(55-68) <b>D</b>		
(39-54) <b>E</b>		
(21-38) <b>F</b>		
(1-20) <b>G</b>		
Not energy efficient - higher running costs		
<b>England &amp; Wales</b>	EU Directive 2002/91/EC	

Please contact our Burton Lettings Office on 01283 845888 if you wish to arrange a viewing appointment for this property or require further information.

The particulars are set out as a general outline only for the guidance of intended purchasers or lessees, and do not constitute, any part of a contract. Nothing in these particulars shall be deemed to be a statement that the property is in good structural condition or otherwise nor that any of the services, appliances, equipment or facilities are in good working order. Purchasers should satisfy themselves of this prior to purchasing.