

1 Castle Court, Burton Upon Trent, DE13 0SX

£725 PCM

 **ABODE**  
SALES & LETTINGS









ABODE are pleased to offer for rental this large two bedroom first floor apartment situated at Horninglow, Burton upon Trent.

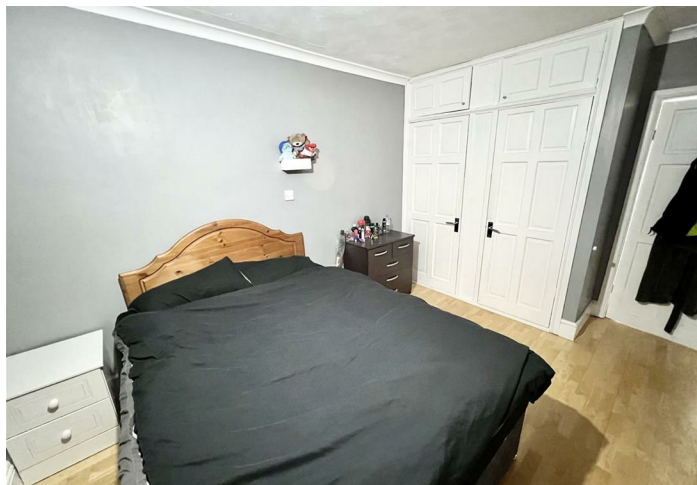
Spacious throughout, this is a rare opportunity to secure a first floor apartment in a much sought after location which offers superb local amenities including schooling, leisure activities and road links.

In brief, the accommodation provides - Kitchen / Diner with a great selection of wall and base units. Good size lounge with dual aspect windows. Two double size bedrooms, master with built in wardrobes. These rooms are serviced by a family bathroom with shower over the bath.

A good sized garden with patio and storage shed complete the garden area. There is allocated parking for multiple vehicles.

Available 7th June 2024.

Book your viewing at the earliest opportunity to avoid disappointment - 01283 845888



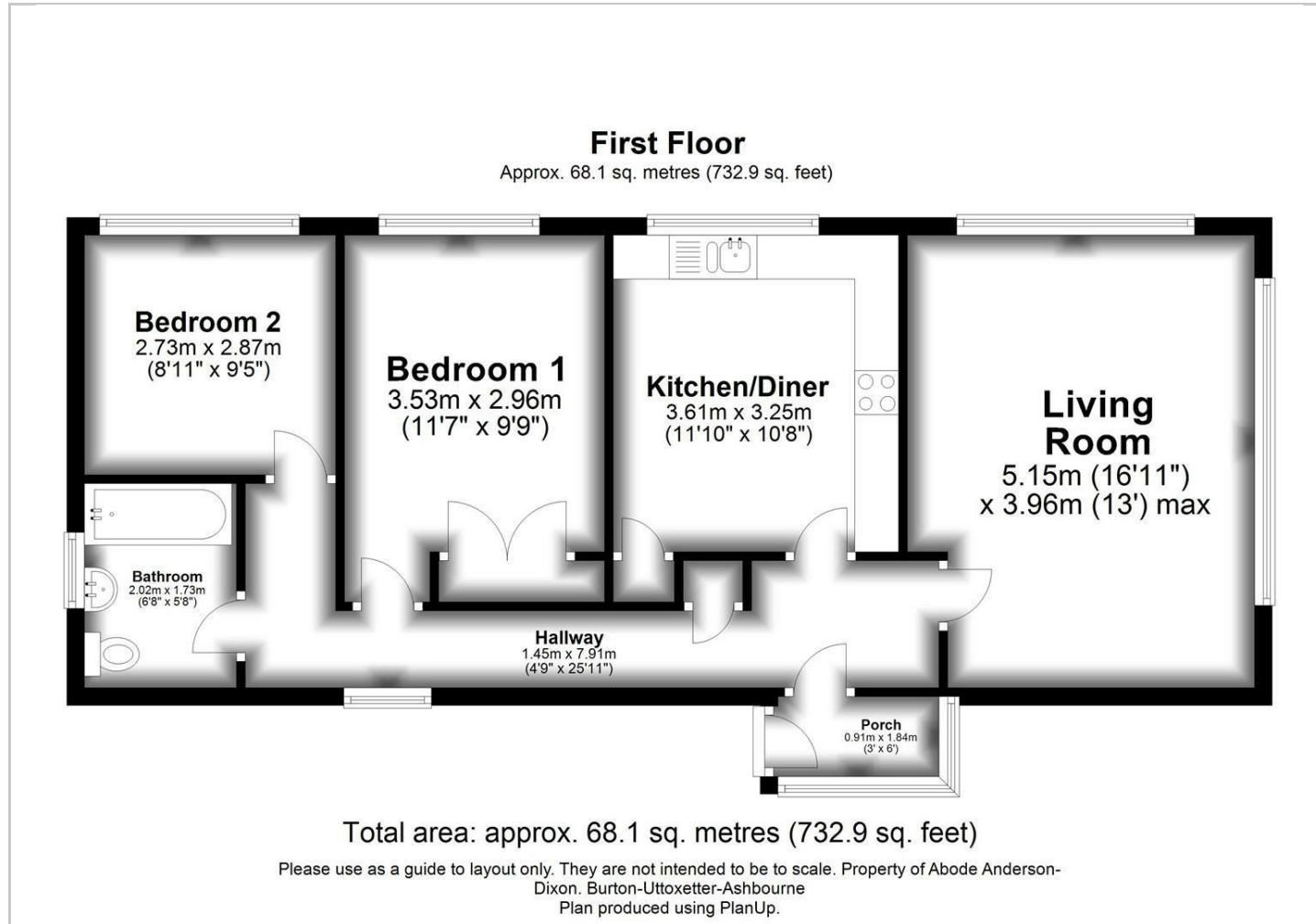




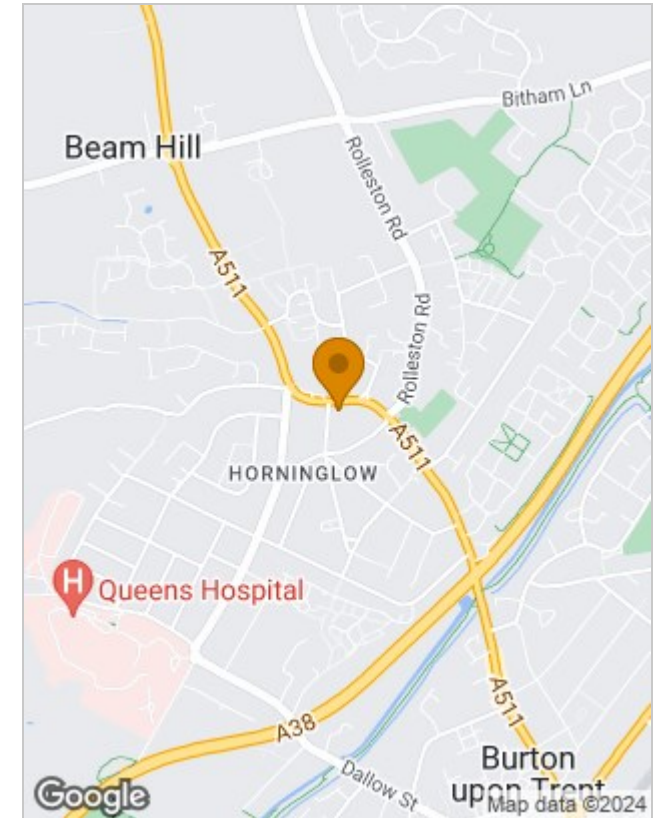




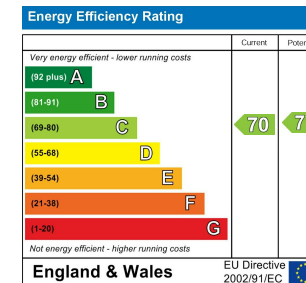
## Floor Plans



## Location Map



## Energy Performance Graph



Please contact our Burton Lettings Office on 01283 845888 if you wish to arrange a viewing appointment for this property or require further information.

The particulars are set out as a general outline only for the guidance of intended purchasers or lessees, and do not constitute, any part of a contract. Nothing in these particulars shall be deemed to be a statement that the property is in good structural condition or otherwise nor that any of the services, appliances, equipment or facilities are in good working order. Purchasers should satisfy themselves of this prior to purchasing.