

The Gamekeepers Cottage Main Street, Derby, DE65 5PQ

£1,250 PCM

 **ABODE**  
SALES & LETTINGS





ABODE Lettings are pleased to offer, nestled in Scropton village, this well presented three-bedroom detached family home.

A spacious kitchen and inviting lounge with garden access provide the perfect spaces for the family. While a separate utility room and downstairs toilet add practicality.

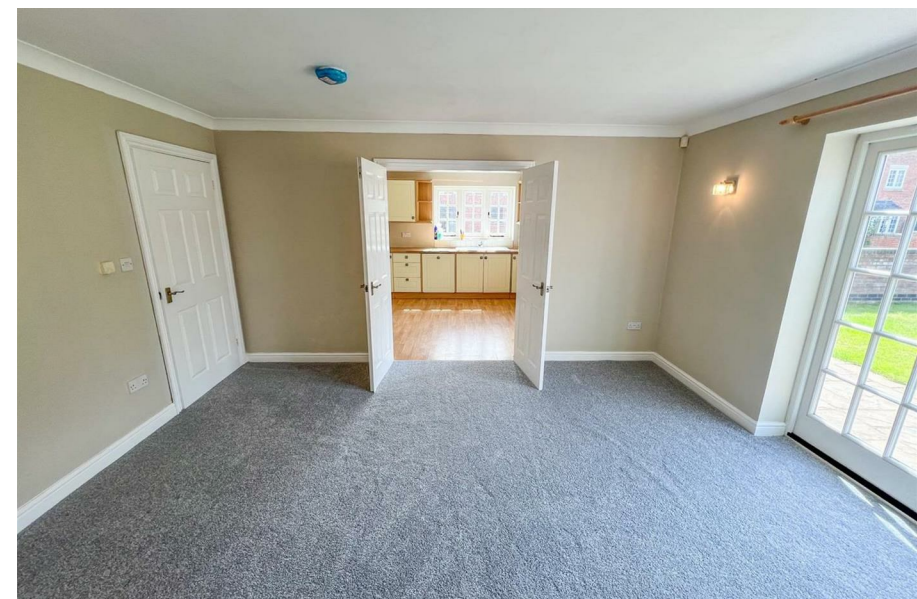
Upstairs, there are three double bedrooms, including a master with en-suite.

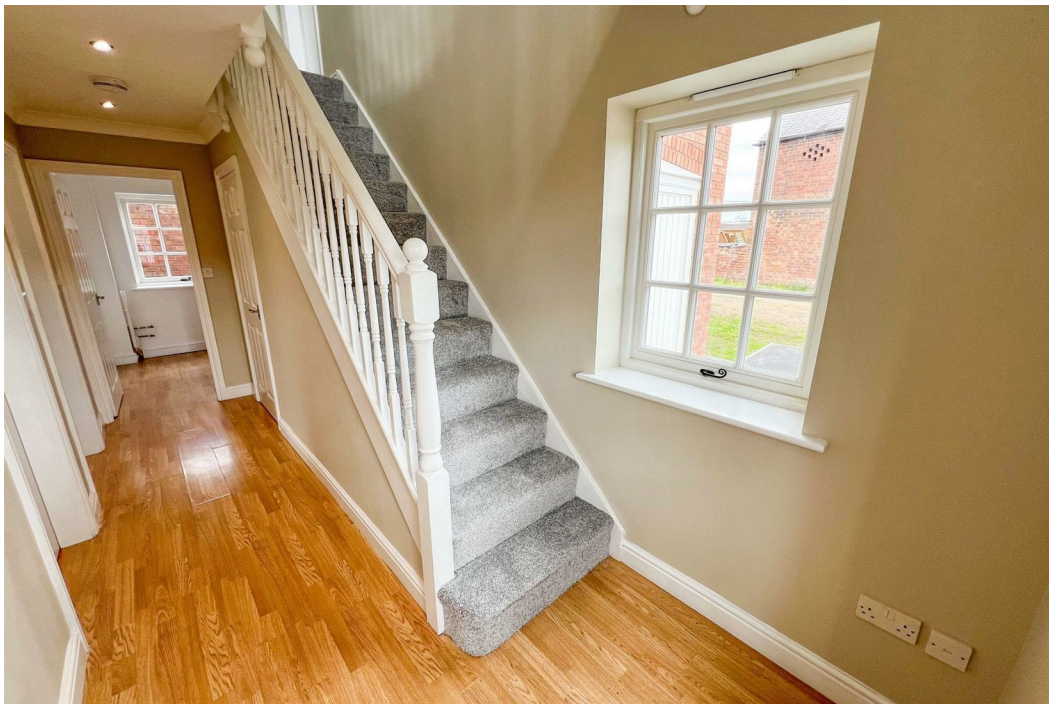
Outside, there is a fully enclosed garden, single garage, and parking for two vehicle.

Available NOW!

Call ABODE Lettings to arrange your viewing!



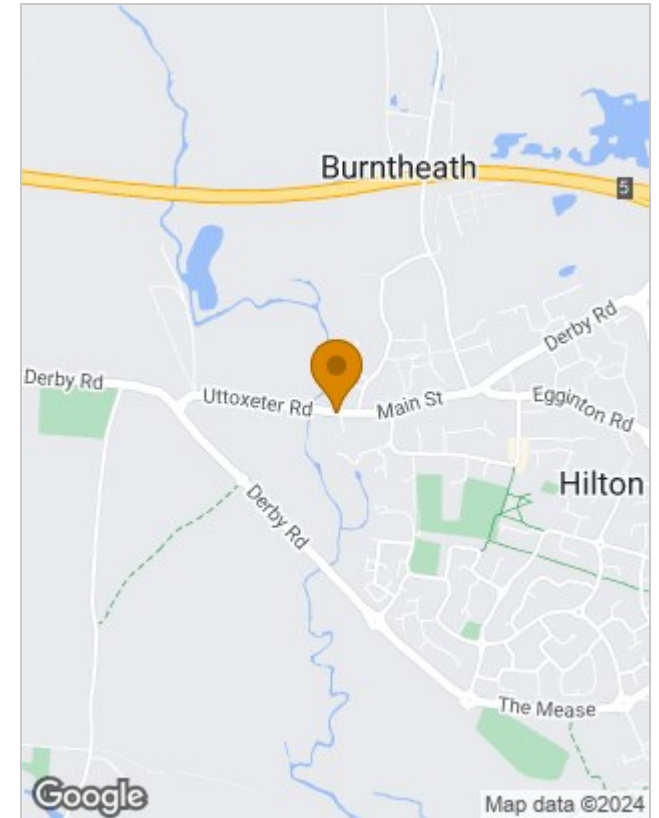




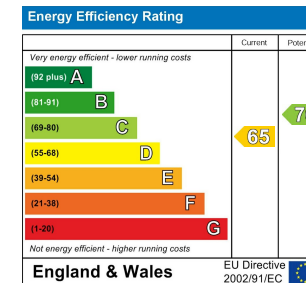
## Floor Plans



## Location Map



## Energy Performance Graph



Please contact our Burton Lettings Office on 01283 845888 if you wish to arrange a viewing appointment for this property or require further information.

The particulars are set out as a general outline only for the guidance of intended purchasers or lessees, and do not constitute, any part of a contract. Nothing in these particulars shall be deemed to be a statement that the property is in good structural condition or otherwise nor that any of the services, appliances, equipment or facilities are in good working order. Purchasers should satisfy themselves of this prior to purchasing.