

oakheart



£255,000

Asking Price

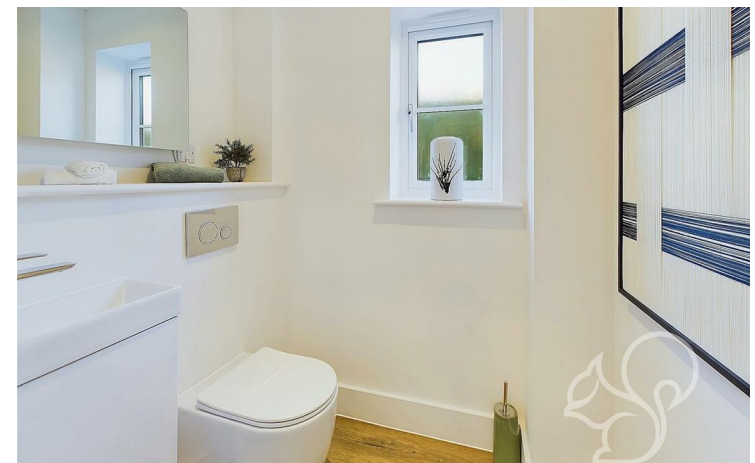
Plot 7, Saltmarsh Place, Tollesbury

Ascend to the first floor and discover this beautifully appointed two-bedroom apartment at Saltmarsh Place, offering 657 square feet of contemporary living space. The principle bedroom features the added luxury of an en-suite bathroom. Benefit from sustainable features, including an EPC B rating. With modern design, convenient amenities, and a prime location in the coastal village of Tollesbury, this apartment offers the perfect blend of comfort and coastal charm.

Saltmarsh Place is an exclusive development of 17 beautifully designed homes in the picturesque village of Tollesbury, Essex. This charming community seamlessly blends local architectural styles with modern design elements, offering sustainable and smart living solutions. The development is situated in a prime coastal location, close to local shops, schools, healthcare facilities, and recreational areas like Tollesbury Marina.

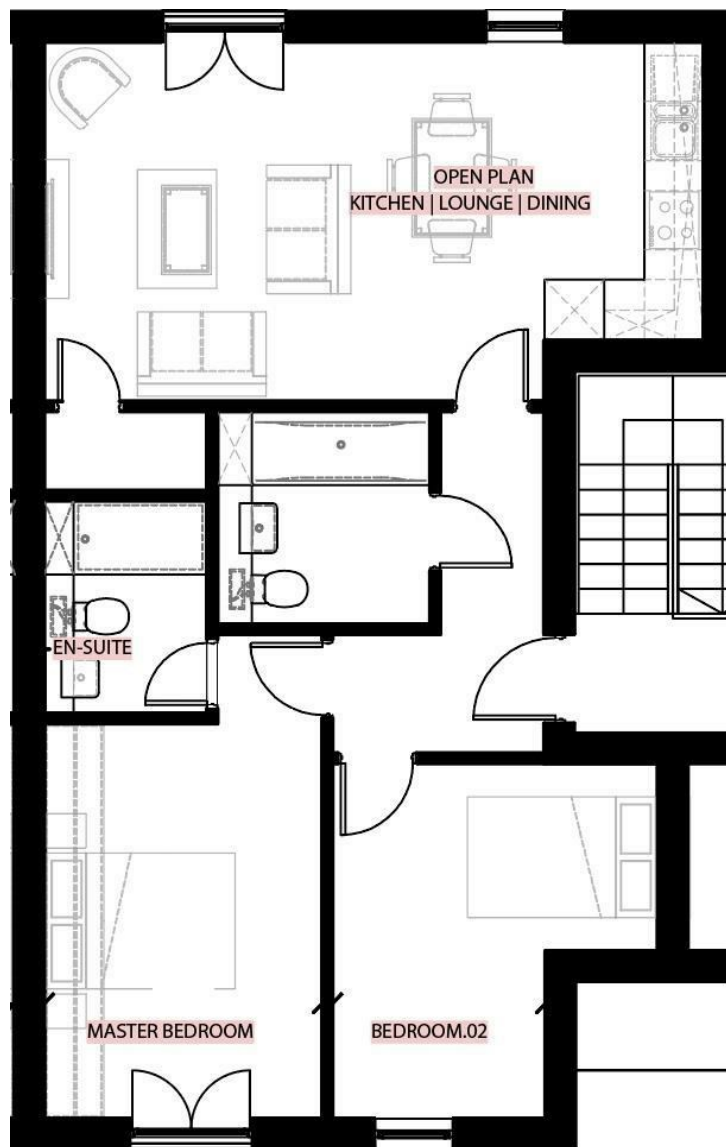
This apartment at Saltmarsh Place provides an opportunity to enjoy coastal living at its finest, with easy access to major roads (A12, M11, M25) and train stations for London commuters. The development's focus on sustainability and modern amenities ensures a comfortable and eco-friendly lifestyle in this thriving coastal community.

*Images Depict On-Site Show Home
Completion due Q4 2025









Local Authority:
Maldon District Council

Tenure:
Leasehold

Council Tax Band:
New Build

Energy Efficiency Rating

	Current	Potential
<i>Very energy efficient - lower running costs</i>		
(92 plus) A		
(81-91) B		
(69-80) C		
(55-68) D		
(39-54) E		
(21-38) F		
(1-20) G		
<i>Not energy efficient - higher running costs</i>		
England & Wales	EU Directive 2002/91/EC	

Agents Note: Whilst every care has been taken to prepare these particulars, they are for guidance purposes only. All measurements are approximate and are for general guidance purposes only and whilst every care has been taken to ensure their accuracy, they should not be relied upon.

Oakheart New Homes
01245 808119
newhomes@oakheart.co.uk
20 Victoria Road, Chelmsford, Essex, CM1 1PA

oakheart