



oakheart



£225,000

Plot 6, Saltmarsh Place, Tollesbury

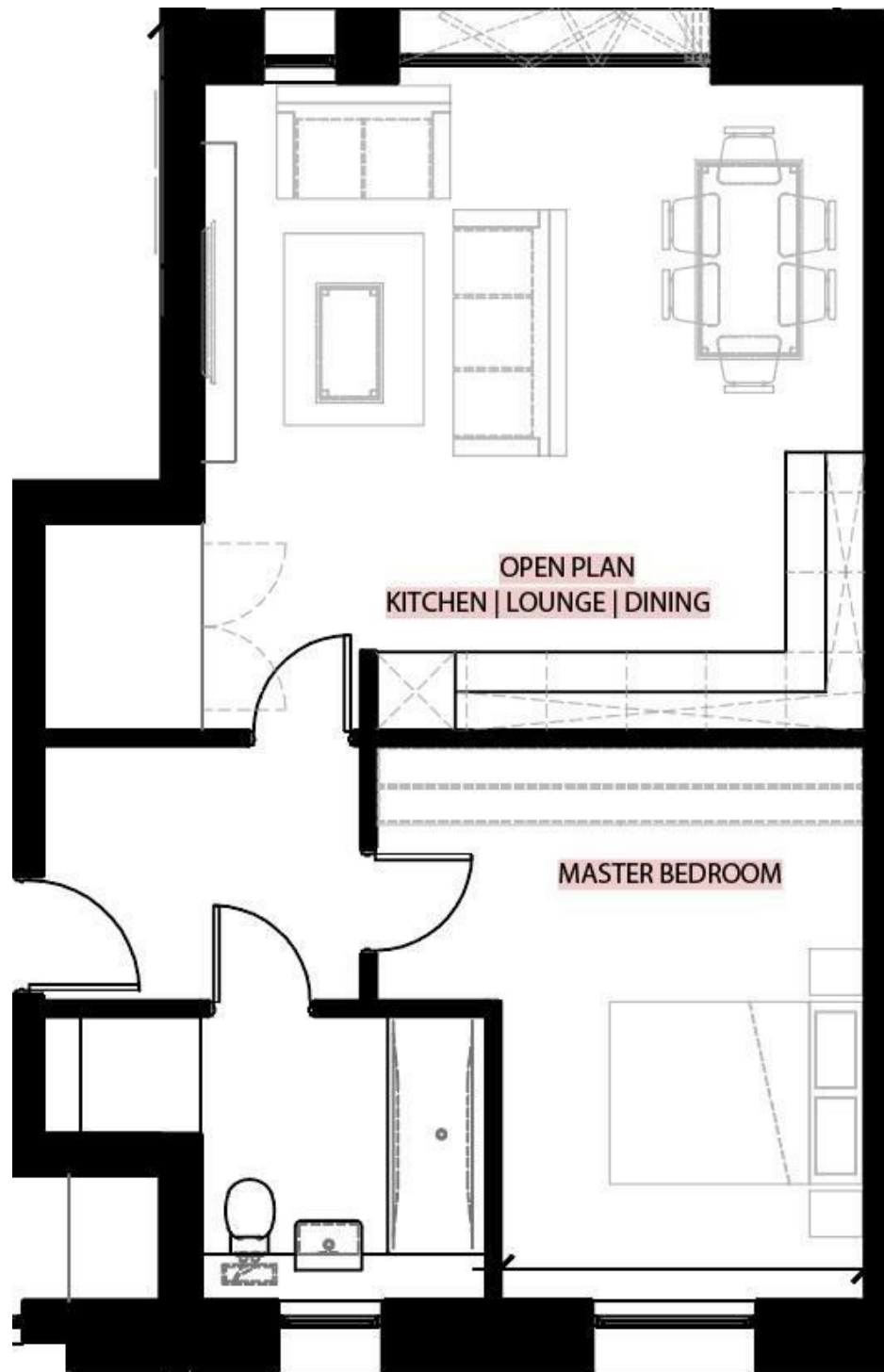
- Luxury Development of only 17 homes
- Coastal Location
- Own private garden
- 999 Year Lease
- Apartment Block of only 8 apartments
- Close to local shops, schools, healthcare facilities, and recreational areas like Tollesbury Marina
- Easy access to major roads (A12, M11, M25) and train stations for London commuters
- Blends local architectural styles with modern design elements


****5% Deposit Contribution Available**** Step outside to your own private garden in this delightful ground-floor, one-bedroom apartment at Saltmarsh Place. Offering 538 square feet of modern living space, this home is enhanced by direct access to a charming outdoor area, perfect for relaxing, gardening, or entertaining. Benefit from a 999-year lease with no ground rent, allocated parking, and all the sustainable features of this EPC B-rated development, creating a seamless blend of indoor and outdoor living in the heart of Tollesbury,

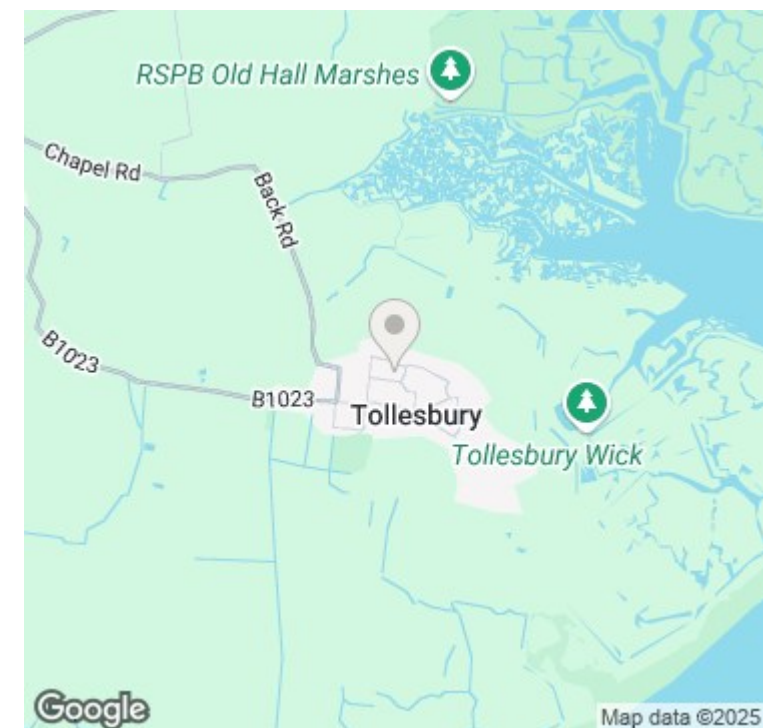
Discover coastal living at its finest with Saltmarsh Place, an exclusive development of 17 beautifully designed homes in the picturesque village of Tollesbury, Essex. This charming community seamlessly blends local architectural styles with modern design elements, offering sustainable and smart living solutions.

*Images Depict On-Site Show Home
Completion due Q4 2025





Energy Efficiency Rating		
	Current	Potential
Very energy efficient - lower running costs		
(92 plus) A		
(81-91) B		
(69-80) C		
(55-68) D		
(39-54) E		
(21-38) F		
(1-20) G		
Not energy efficient - higher running costs		
England & Wales	EU Directive 2002/91/EC 	



oakheart

Oakheart New Homes
01245 808119
newhomes@oakheart.co.uk
20 Victoria Road, Chelmsford, Essex,