



oakheart

£574,950

Aylett's Green, Kelvedon

An elegant 4-bedroom family home located in the historic village of Kelvedon, Essex. This family home offers 1,718 sq. ft. of living space, featuring a stunning kitchen/family/dining area with roof lights and French doors, a separate sitting room with a bay window, and study area, perfect for working from home. The first floor boasts four bedrooms, including a master with an en-suite, and a family bathroom. The property

comes with high-end finishes such as an upgraded Shaker kitchen, Silestone worktops, and Amtico flooring throughout.

Kelvedon, situated in Colchester, Essex, provides an ideal blend of rural charm and modern convenience. The village benefits from excellent transport links, with direct train services to London Liverpool Street

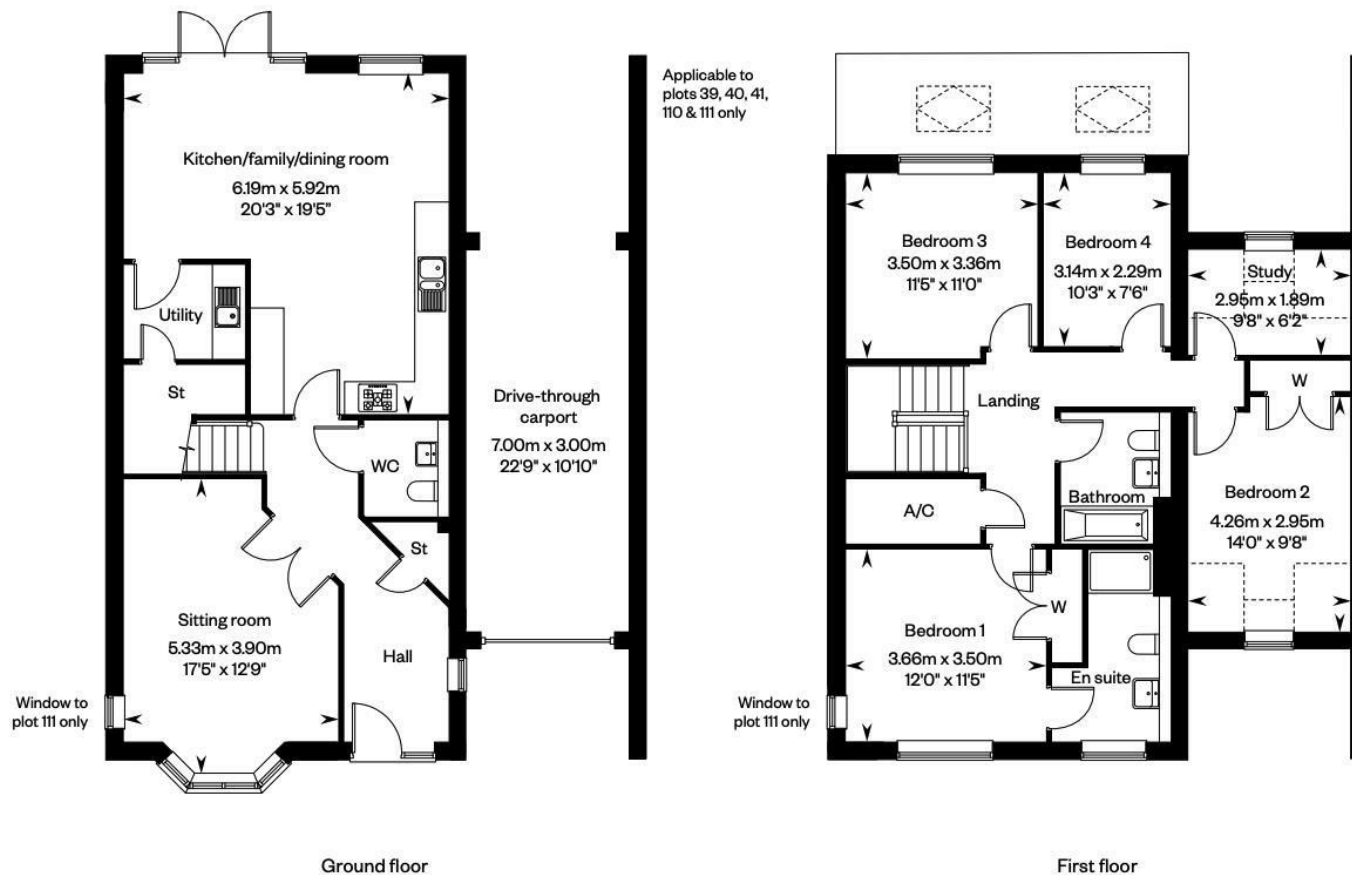
taking just 13 minutes to reach Colchester station. This makes Kelvedon an attractive option for commuters seeking a quieter lifestyle without sacrificing easy access to the capital.












Local Authority:
Braintree District Council

Tenure:
Freehold

Council Tax Band:
New Build

Energy Efficiency Rating

	Current	Potential
Very energy efficient - lower running costs		
(92 plus) A		
(81-91) B		
(69-80) C		
(55-68) D		
(39-54) E		
(21-38) F		
(1-20) G		
Not energy efficient - higher running costs		
England & Wales	EU Directive 2002/91/EC 	

Agents Note: Whilst every care has been taken to prepare these particulars, they are for guidance purposes only. All measurements are approximate and are for general guidance purposes only and whilst every care has been taken to ensure their accuracy, they should not be relied upon.

Oakheart New Homes
01245 808119
newhomes@oakheartproperty.co.uk
20 Victoria Road, Chelmsford, Essex, CM1 1PA

oakheart