

oakheart



£600,000

Plot 9, The Maltings, Widdington

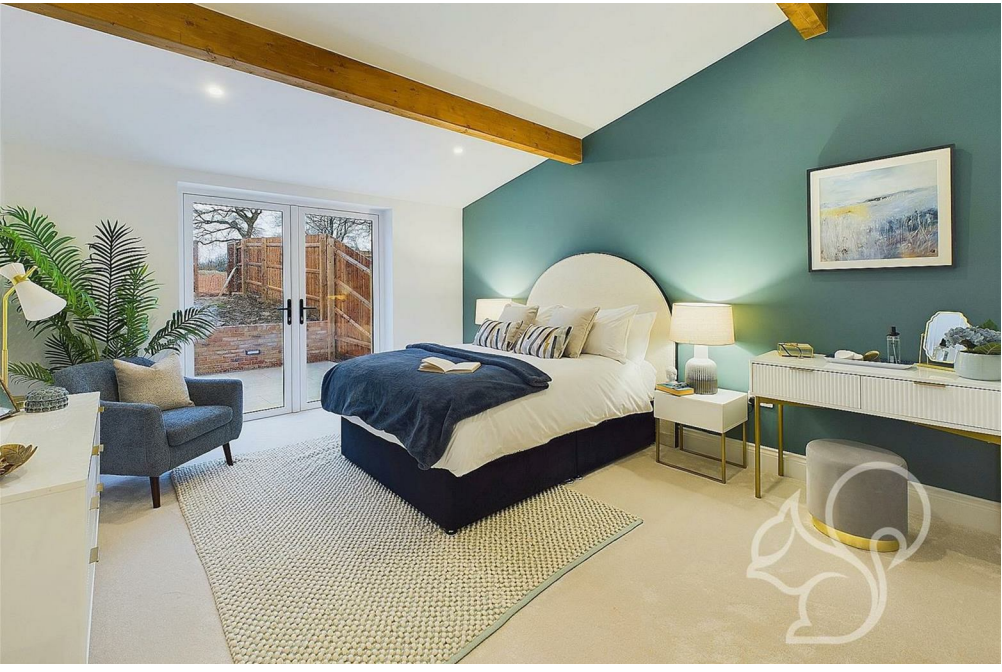
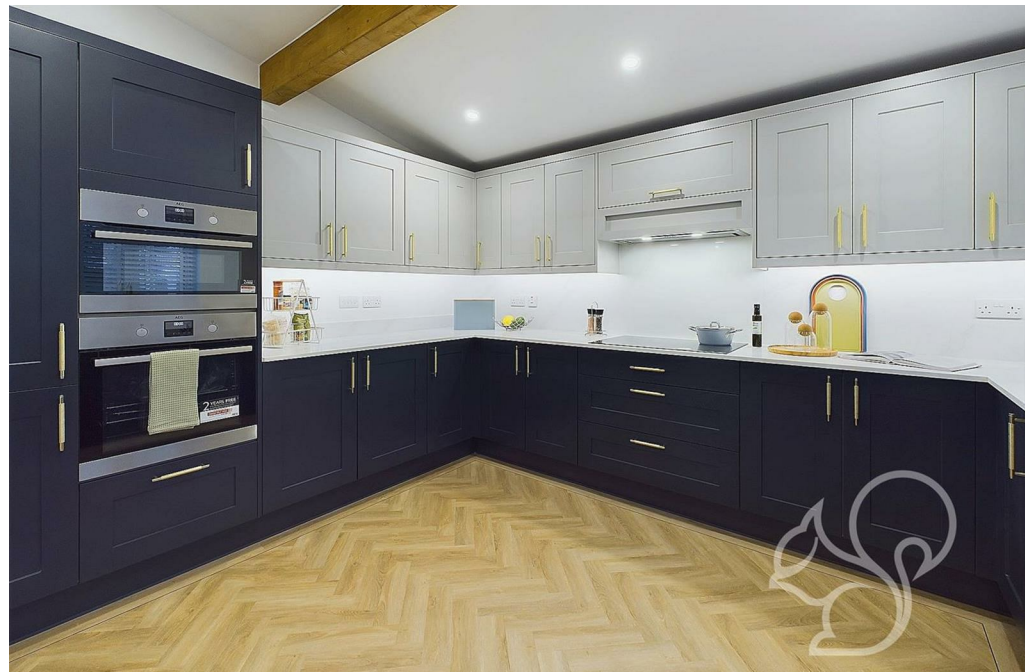
Plot 9, The Maltings is a stunning 4-bedroom detached bungalow. Nestled in an exclusive development in the charming village of Widdington, Essex. This meticulously designed home spans an impressive 1,538 square feet, offering a perfect blend of modern luxury and countryside tranquility. The heart of the home is a breathtaking 25'9 x 28'3 lounge/diner that seamlessly opens to a

contemporary kitchen, creating an expansive living space perfect for both entertaining and everyday family life. Boasting three beautifully proportioned bedrooms - including a primary bedroom with a luxurious en-suite measuring 12 x 14'8 - this property represents the pinnacle of thoughtful design. Every detail has been carefully considered, from the underfloor heating and solar panel battery storage to

the high-end Symphony kitchen with AEG appliances and stunning quartz worktops. The home comes complete with Porcelanosa tiles, LVT flooring, carpeted bedrooms, a fully turfed garden, and an EV car charger, making it an irresistible opportunity for those seeking a sophisticated, energy-efficient home in one of Essex's most picturesque locations.











Local Authority:
Uttlesford District Council

Tenure:
Freehold

Council Tax Band:
New Build

Energy Efficiency Rating

	Current	Potential
Very energy efficient - lower running costs		
(92 plus) A		
(81-91) B		
(69-80) C		
(55-68) D		
(39-54) E		
(21-38) F		
(1-20) G		
Not energy efficient - higher running costs		
England & Wales	EU Directive 2002/91/EC	

Agents Note: Whilst every care has been taken to prepare these particulars, they are for guidance purposes only. All measurements are approximate and are for general guidance purposes only and whilst every care has been taken to ensure their accuracy, they should not be relied upon.

Oakheart New Homes
01245 808119
newhomes@oakheart.co.uk
20 Victoria Road, Chelmsford, Essex, CM1 1PA

oakheart