

oakheart



£395,000

Plot 40, Sudbury Fields

Part-Exchange
available



The Carriage Houses at Sudbury Fields are a collection of stylish 3-bedroom semi-detached homes, offering 1,023 sq ft of modern living space. These homes seamlessly blend traditional Suffolk architecture with contemporary interiors, featuring open-plan living areas bathed in natural light. The high-specification kitchen is equipped with integrated Samsung appliances, including a ceramic

hob, double oven, fridge freezer, and dishwasher. Designed for sustainable living, The Carriage Houses incorporate the latest smart home technology from Samsung SmartThings, allowing you to control heating, lighting, and appliances from your smartphone for ultimate convenience and energy efficiency. With their private gardens, off-street parking, and access to the development's

landscaped green spaces, The Carriage Houses offer a perfect balance of modern amenities and rural tranquility in the charming village of Great Cornard.

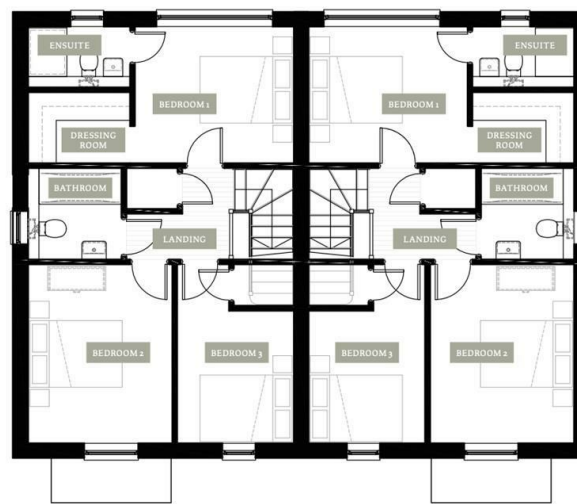
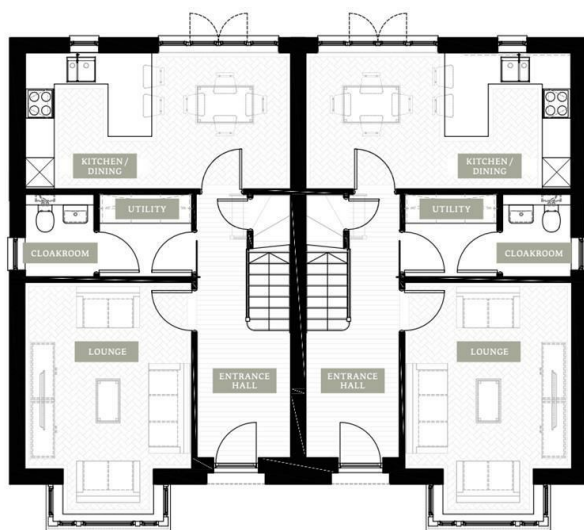
*CGI Images are representation only and may depict another plot on the development.











Local Authority:
Babergh District Council

Tenure:
Freehold

Council Tax Band:
New Build

Energy Efficiency Rating

	Current	Potential
<i>Very energy efficient - lower running costs</i>		
(92 plus) A		
(81-91) B		
(69-80) C		
(55-68) D		
(39-54) E		
(21-38) F		
(1-20) G		
<i>Not energy efficient - higher running costs</i>		
England & Wales	EU Directive 2002/91/EC	

Agents Note: Whilst every care has been taken to prepare these particulars, they are for guidance purposes only. All measurements are approximate and are for general guidance purposes only and whilst every care has been taken to ensure their accuracy, they should not be relied upon.

Oakheart New Homes
01245 808119
newhomes@oakheartproperty.co.uk
Unit 3 The Old Joinery, Colchester, Essex, CO2 0LT

oakheart