





## Parkfield House, Guildford, GU1 1TS

£2,000PCM (Deposit: £2,307)

🛏 2 🚿 2 🛋 1

- Ground floor apartment
- Two bedrooms with underfloor heating
- Two bathrooms with underfloor heating
- Underground gated parking
- Open plan living
- Direct access to patio and communal gardens
- Superb location just across from Stoke Park
- Easy access to A3/A25
- No deposit option available
- Within easy reach of Guildford town centre and train stations



Tax Band: D Furnished: Unfurnished

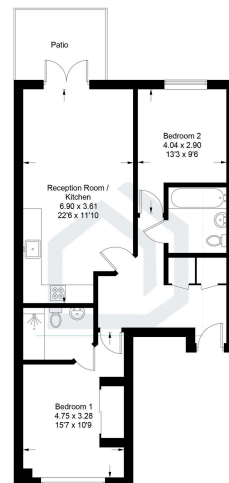
Presented in excellent decorative order, this superb two-bedroom ground floor flat offers a contemporary living experience. Situated in an exclusive development directly opposite the picturesque Stoke Park, the flat enjoys a prime location just a short walk from Guildford town centre. London Road train station is also conveniently close, providing excellent transport links to London and beyond. The property boasts an open-plan living and dining area, ideal for both entertaining and relaxing, with direct access to a private patio and the beautifully maintained communal gardens, offering a peaceful retreat. The main bedroom benefits from an ensuite bathroom, while a second, well-appointed bathroom serves the second bedroom and guests. Additionally, the flat comes with secure, gated underground parking, ensuring peace of mind and convenience. This property offers an exceptional blend of modern living, privacy, and location, making it a truly standout home.





# **Parkfield House, Guildford, GU1 1TS**

Approximate Gross Internal Area = 68.0 sq m / 731 sq ft



## **Ground Floor**

Illustration for identification purposes only, measurements are approximate, not to scale. Fourtaka.co © (D1161250)

