



Pacey Wingent Dickson
01372 456 804
paw@paw.co.uk
FOR SALE



**Pacey
Wingent
Dickson.**

INDEPENDENT PROPERTY AGENTS

*Helping the perfect property find you...
...time is precious. Let's not waste it!*

Tudor Close, Chessington, KT9 1BL

Offers Over £600,000

🛏️ 3 🚿 1 🛋️ 2

- Chain free
- Quiet cul-de-sac
- Large open plan kitchen/diner with bi-fold doors
- Very close to Chessington North train station
- Gas central heating
- 3/4 double bedroom Tudor style house
- Off street parking
- Secluded garden
- Large garden studio ideal for gym, study, summer house or storage
- Close to very good schools including St. Pauls, Castle Hill and Lovelace



Chain-free and just 0.5 miles from Chessington North station, this well-presented Tudor-style semi-detached house offers three/four bedrooms. It's located near excellent primary and secondary schools, as well as shops.

Situated in a convenient cul-de-sac, the property includes a driveway with ample parking. It features a modern open-plan kitchen-dining room with bi-folding doors leading to decking and a well-maintained private garden. At the back of the garden, there's a 4.9m cabin, ideal as an office, gym or summer house.

The separate lounge and playroom/fourth bedroom are perfect for families and entertaining. Additional features include a downstairs W/C, three upstairs bedrooms, and a family bathroom.





Tudor Close, Chessington, KT9

Approximate Gross Internal Area = 96.0 sq m / 1033.5 sq ft
 Outbuilding = 16.1 sq m / 173.6 sq ft
 Total = 112.1 sq m / 1207.1 sq ft

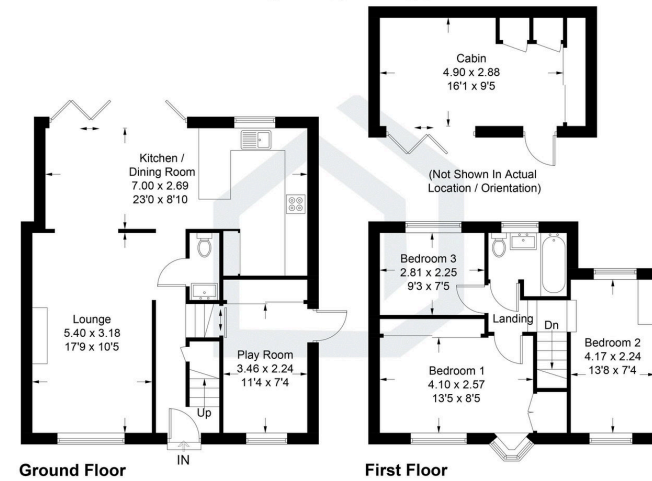


Illustration for identification purposes only, measurements are approximate, not to scale. floorplansUsketch.com © (ID1103960)

