



INDEPENDENT PROPERTY AGENTS

*Helping the perfect property find you...
...time is precious. Let's not waste it!*

Fairway Heights, GU15

£1,200PCM (Deposit: £1,384)

 1  1  1

- One bedroom apartment
- Private cul-de-sac
- Views of Camberley Heath Golf Club
- Modern throughout
- Off-street parking
- Communal gardens
- Secure entry phone system
- Light and spacious throughout



Tax Band: C Furnished: Not specified

This beautifully presented top floor apartment is located in a private cul-de-sac with views of Camberley Heath Golf Club. The accommodation includes a lounge/dining room, a modern, well-fitted kitchen, a bedroom with an extensive range of fitted wardrobes, and a refitted shower room. Additional features off-street parking, communal gardens, and a secure entry phone system.

Located in a sought after area of Camberley, this apartment is in a vibrant town offering many premium and high street shops, a variety of restaurants and leisure facilities. It also boasts great transport links, including easy access to the M3 and M4 motorways and the train station.



Fairway Heights, Camberley, GU15
 Approximate Gross Internal Area 41 sq m / 441 sq ft

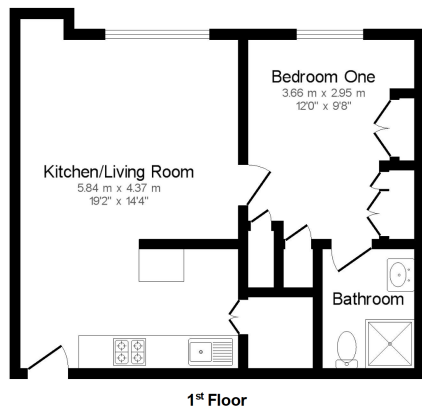


Illustration for identification purposes only, measurements are approximate and not to scale.

