

## Carshalton Road, Sutton, SM5 3PZ

Asking Price £580,000

🛏 4 🚿 1 🚗 3



- Victorian home built in 1896
- Four double bedrooms
- Three local parks nearby - The Grove, Carshalton and Warren Park
- Ideally located for road transport links - X26, 407 and 154 buses
- Large conservatory
- Catchment area for popular schools
- Large double bedroom reception room with two bay windows
- Ideally located for rail transport links - Carshalton, Carshalton Beeches and Morden
- Cellar with hidden room and loft room
- Rear garden with side access

### Carshalton Road, Sutton, SM5 3PZ

Approximate Gross Internal Area = 190.6 sq m / 2052 sq ft  
(Including Basement And Loft)

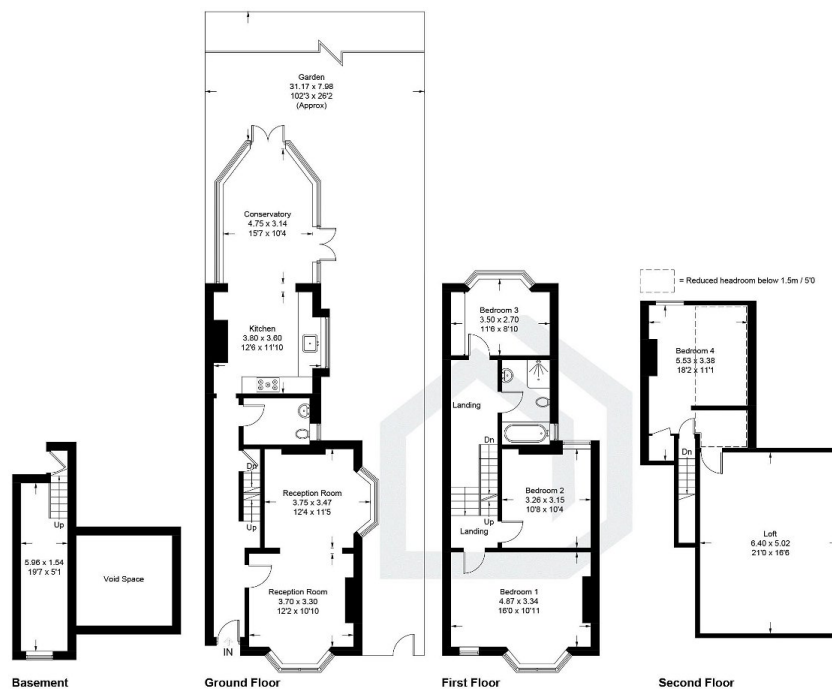


Illustration for identification purposes only, measurements are approximate, not to scale. floorplansUsketch.com © (ID1083570)

Built in 1896, a rarely available Victorian home in the catchment area for popular schools. With many period features the property comprises four double bedrooms, large double reception room with two bay windows, kitchen/diner, large conservatory and garden. Additionally, there is a cellar with a hidden room and a converted loft room with potential. The property is ideally located for transport links including three mainline stations, Thames Links and the Underground.