



## Millmead Terrace, Guildford, GU2

£1,300PCM (Deposit: £1,500)

🛏️ 0 🚿 1 🛋️ 1



Tax Band: A Furnished: Part furnished

An enormous ground floor Studio maisonette with a sleek and modern interior that offers the perfect blend of comfort, convenience, and contemporary living.

Situated just a stone's throw away from Guildford station and city centre, making it ideal for professionals and students alike.

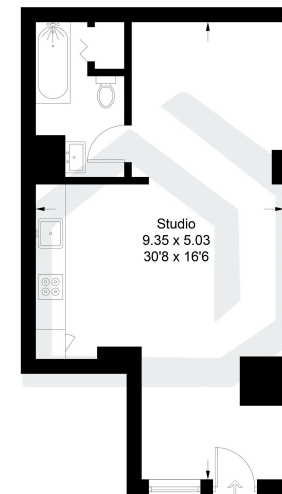
Nearby local amenities such as shops, restaurants, and entertainment options are right on your doorstep meaning everything you need is within easy reach.





**Millmead Terrace Guildford, GU2 4AU**

Approximate Gross Internal Area = 41.8 sq m / 450 sq ft



**Ground Floor**

Illustration for identification purposes only, measurements are approximate, not to scale. floorplansearch.com © (10/10/19)



**Energy Efficiency Rating**

	Current	Potential
<i>Very energy efficient - lower running costs</i>		
(92 plus) <b>A</b>		
(81-91) <b>B</b>		
(69-80) <b>C</b>		80
(55-68) <b>D</b>	63	
(39-54) <b>E</b>		
(21-38) <b>F</b>		
(1-20) <b>G</b>		
<i>Not energy efficient - higher running costs</i>		
<b>England &amp; Wales</b>	EU Directive 2002/91/EC	



If your property is on the market with another agent, please check your terms of business to avoid paying two commissions. PACEY WINGENT DICKSON PROPERTY PARTNERSHIP LTD. Registered Office, Station House, Station Approach, East Horsley, KT24 6QX. Registration No. 15446136 (England).



*Helping the perfect property find you...  
...time is precious. Let's not waste it!*