




The Lancasters,  
Lancaster Gate W2

£2,650 pw





Experience the epitome of luxury living at The Lancasters, W2's most coveted address, where modern elegance meets timeless charm. This exquisite three-bedroom split-level apartment, situated on the fourth and fifth floors, offers unparalleled views of Hyde Park and Kensington Gardens. The Lancasters is a Grade II listed masterpiece, originally an elegant parade of 15 stucco-fronted 19th-century houses, now transformed into a prestigious residential development.

**Location:**Ideally located opposite the scenic open spaces of Hyde Park and Kensington Gardens, The Lancasters offers the best of both worlds—tranquility and proximity to vibrant city life. The West End, renowned for its high-end shopping, cinemas, and theatres, is just moments away. Notting Hill, with its boutique shops, cafes, and bars, is also nearby.

**Transport Links:**Lancaster Gate Station (Central Line)Paddington Station (Heathrow Express and National Rail)This luxurious apartment offers a unique blend of historic charm and modern convenience, making it the perfect residence for those seeking an unparalleled lifestyle in one of London's most desirable locations.





## *Features*

- 3 Bedrooms
- 3 Bathrooms
- 24 hrs Concierge
- 2 Juliet Balconies
- Communal Garden
- Swimming pool
- Steam room
- Gym
- Lift
- Underground  
Allocated parking
- Lift

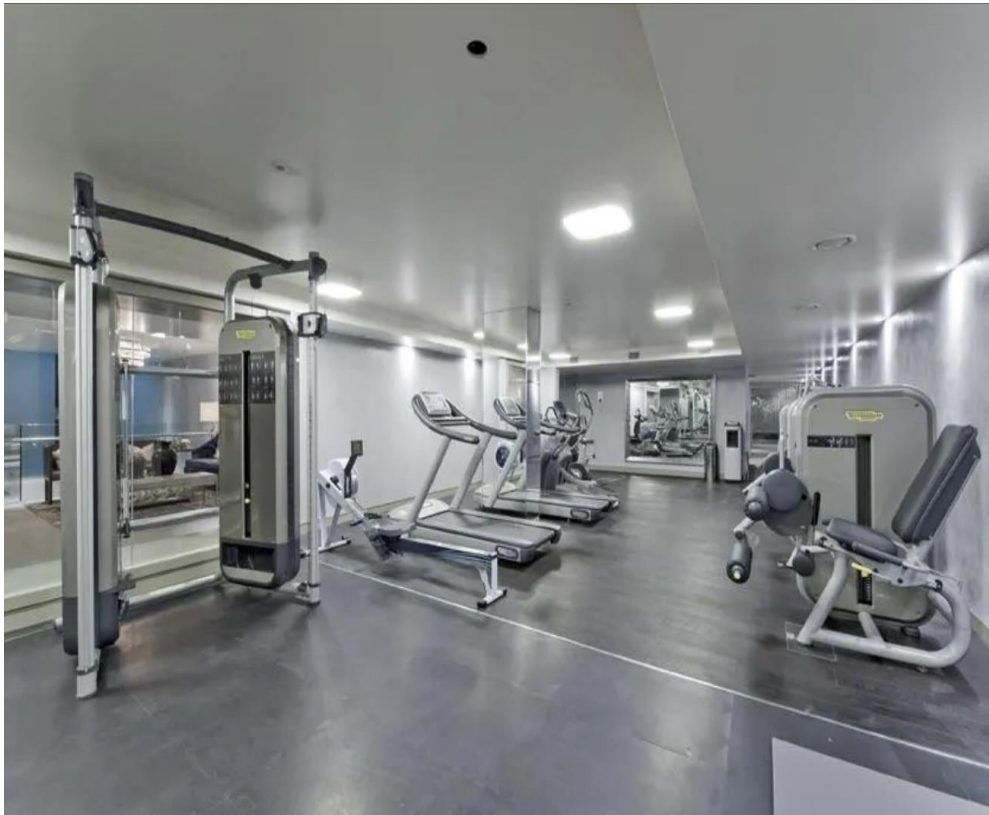












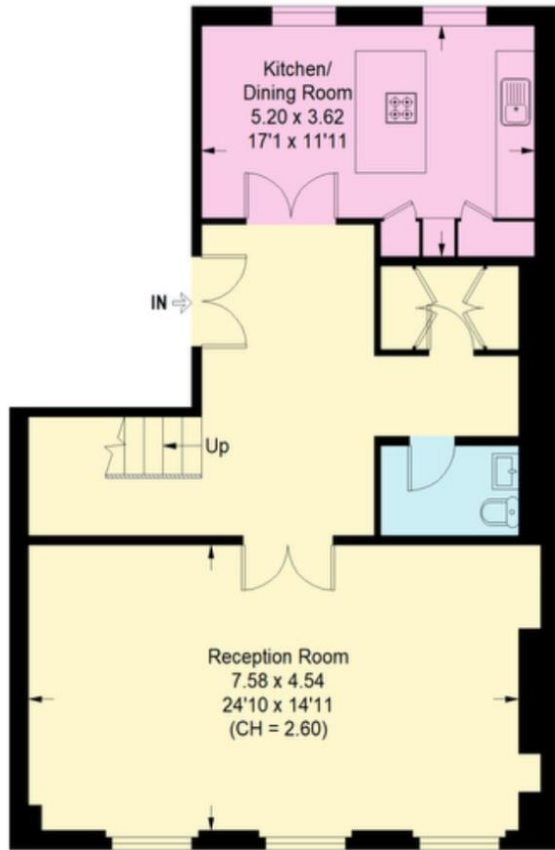


# Lancaster Gate, W2

Approximate Floor Area = 162.39 sq m / 1748 sq ft

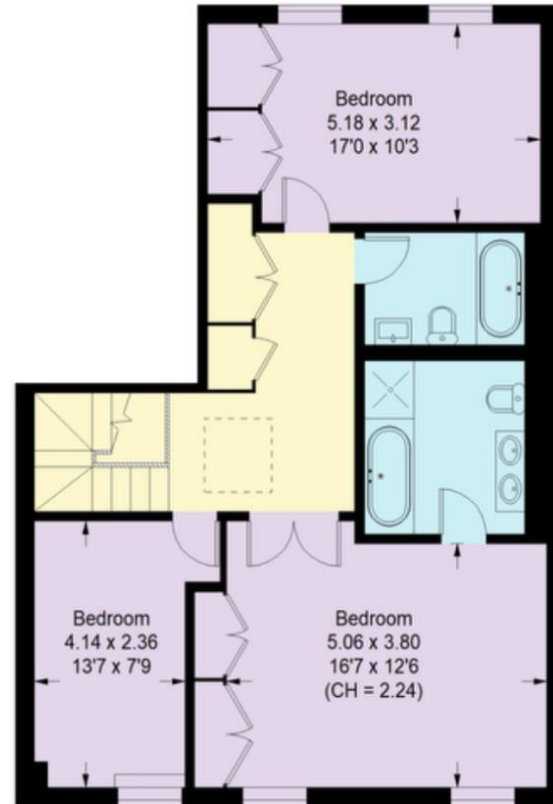


 = Reduced head height below 1.5m



**Fourth Floor**

Approximate Area = 83.52 sq m / 899 sq ft



**Fifth Floor**

Approximate Area = 78.87 sq m / 849 sq ft

Not to scale, for guidance only and must not be relied upon as a statement of fact.  
All measurements and areas are approximate only



Global 1  
23 Berkeley Square  
London W1J 6JE  
T: +44 (0)20 3355 0191 W: [www.theglobal1.com](http://www.theglobal1.com)