




Denmark Place, Soho

Price £7,468 pw





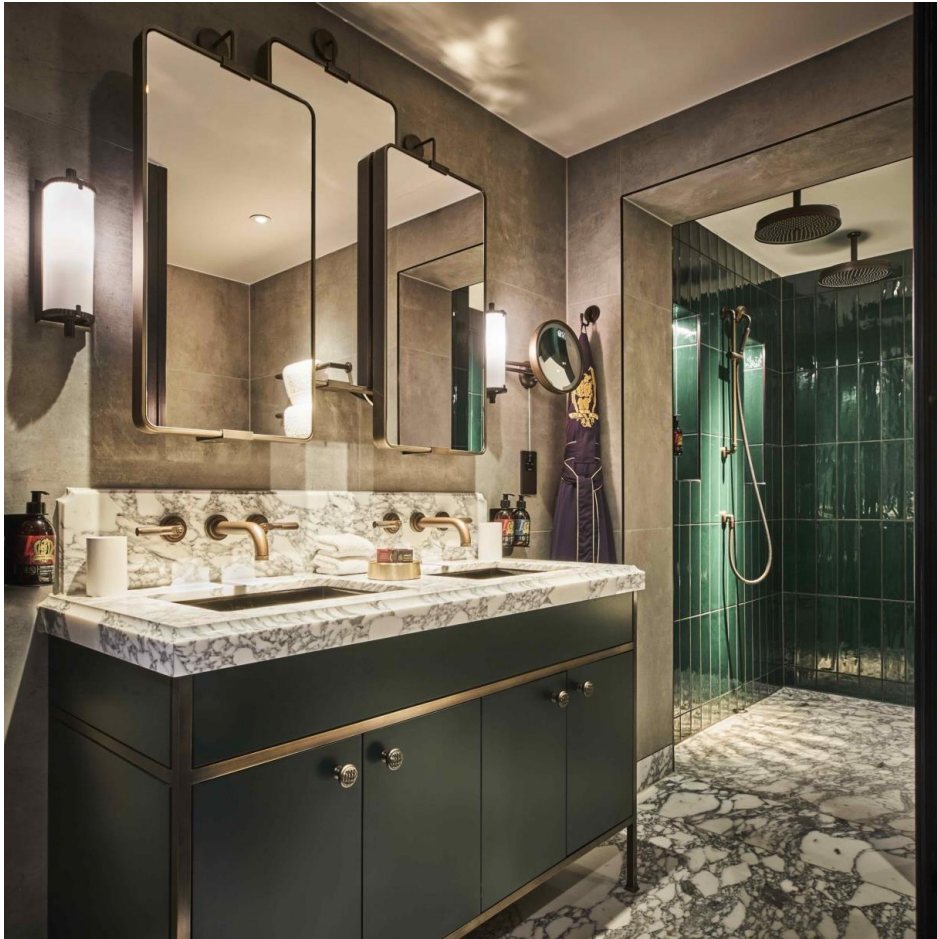
Welcome to Denmark Place, located in the heart of London's West End. This stunning one bedroom rental apartment offers an exciting opportunity to experience life in the capital. Situated close to Tottenham Court Road and the world-famous Oxford Street, you will be spoilt for choice when it comes to shopping, dining and entertainment.

This luxurious apartment features a spacious bedroom with a stand alone bath, and a separate seating area. The property also comes with Wi-Fi, bathroom amenities, and a butler service to ensure that you have all the comforts of home during your stay.

The building has secure entry and is located in a vibrant part of town, which is home to some of London's most iconic landmarks. Soak up the atmosphere of the city from your doorstep with a host of activities and attractions nearby including the British Museum, Covent Garden and Soho.

Denmark Place is the perfect base for business or leisure travelers who want to experience all that Central London has to offer. With excellent transport links and easy access to the main sights, this apartment rental will be sure to provide a comfortable stay in the capital.

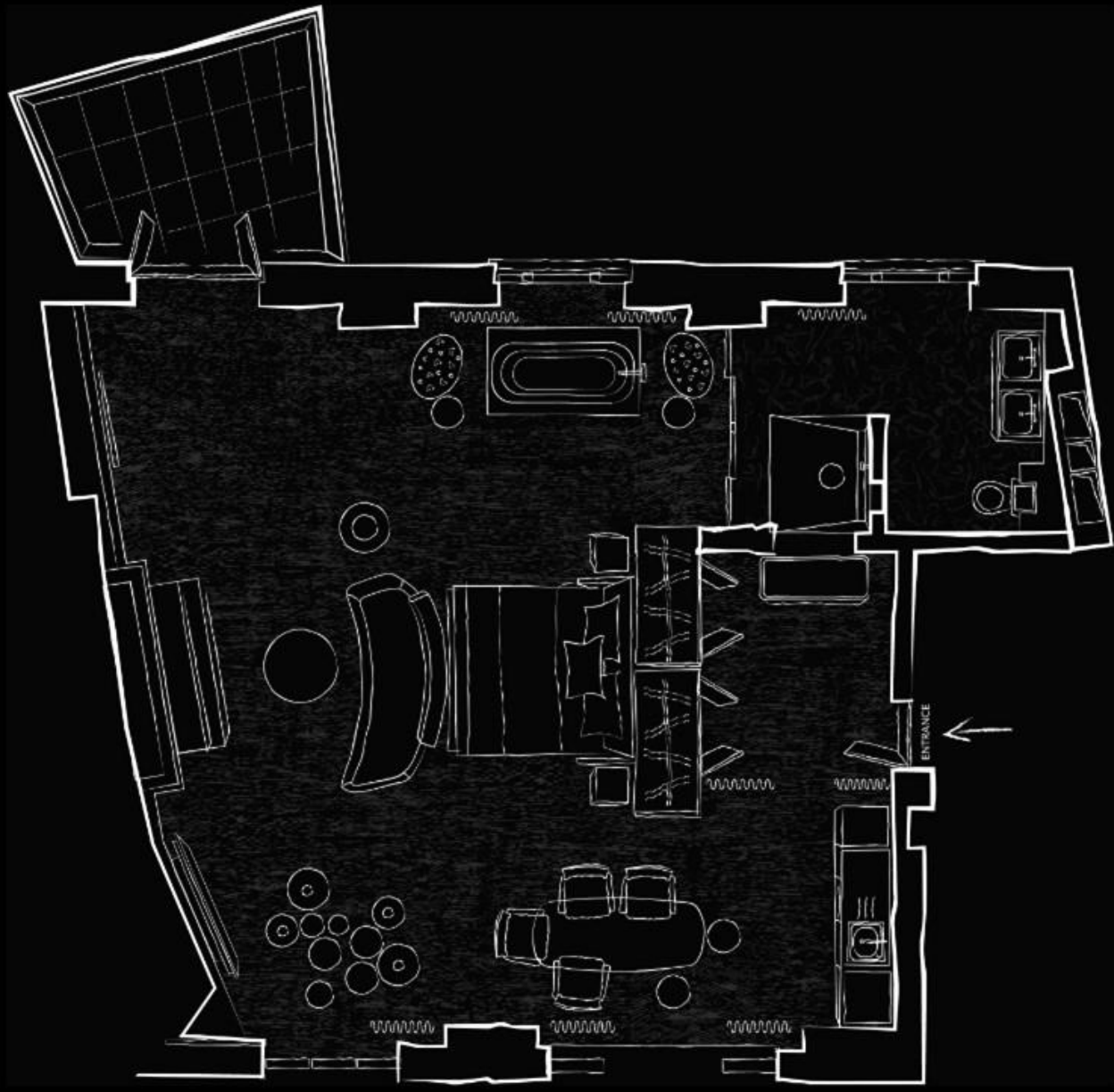


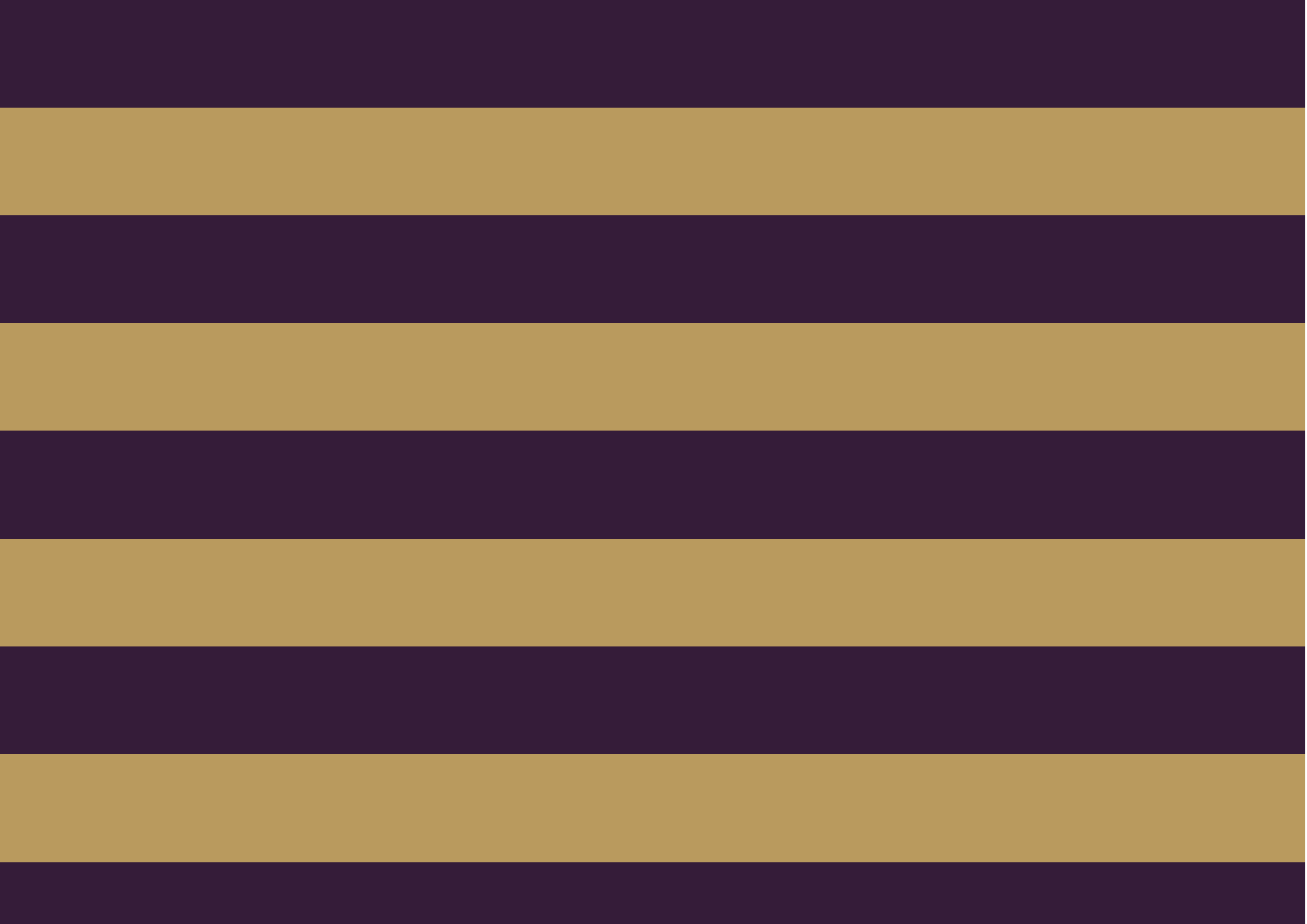




Features

- 1 Bedroom
- 1 Bathroom
- Balcony







The Global 1
23 Berkeley Square
London W1J 6JE
T: +44 (0)20 3355 0191 W: www.theglobal1.com