




Wellington Court, Knightsbridge

Price £12,500 pw





Wellington Court is a luxurious residential property located in the heart of Knightsbridge, one of the most prestigious areas in London. The property is situated on the fifth floor of a sought-after development and comprises eight bedrooms, 10 bathrooms including 4 en-suites, a fully fitted kitchen, three reception rooms in addition to a study and dining room. There is also a separate utility room.

The interior of the property is finished to a high standard, with contemporary fixtures and fittings throughout. Floor-to-ceiling windows provide plenty of natural light and offer stunning views over Knightsbridge and Hyde Park. The bedrooms are spacious and feature built-in wardrobes, while the bathrooms are modern and finished with sleek tiles.

The location of Wellington Court is unrivalled. The property is just moments away from the world-famous Harrods department store and some of the best shopping and dining options London has to offer. The Knightsbridge Underground Station is also conveniently located nearby, offering easy access to the wider city.

Residents of Wellington Court also benefit from a 24-hour porter service, secure underground parking, and a well-maintained communal garden. This property is ideal for those seeking a luxurious lifestyle in one of London's most prestigious locations.







Features

- 8 Bedrooms
- 10 Bathrooms
- 3 Living rooms
- Concierge
- Furnished
- Garden

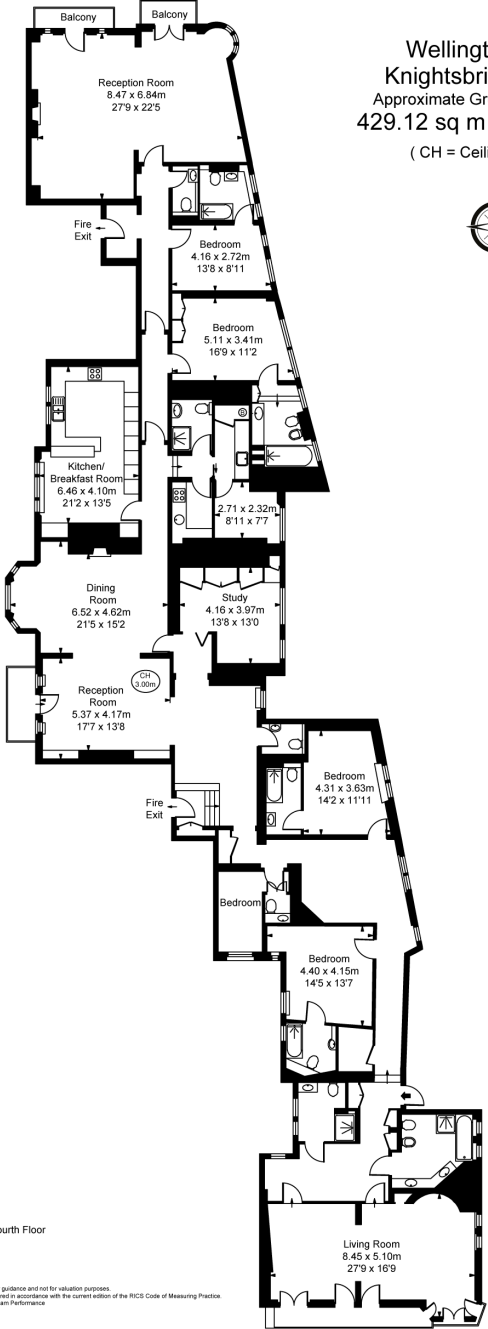


Wellington Court,
Knightsbridge, SW1X

Approximate Gross Internal Area

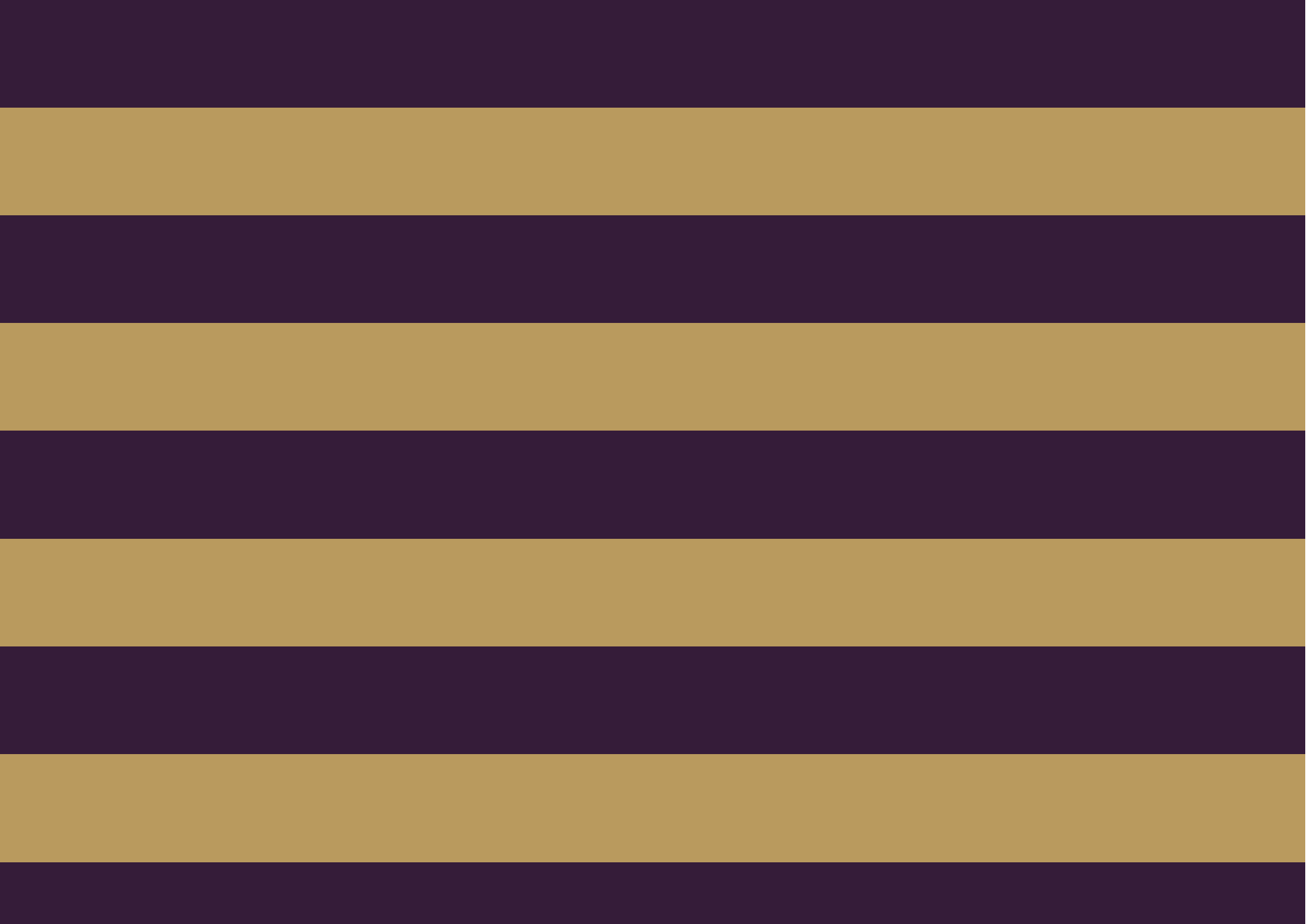
429.12 sq m / 4,619 sq ft

(CH = Ceiling Heights)



Fourth Floor

This plan is not to scale. It is for guidance and not for valuation purposes.
All measurements and areas are approximate only, and have been prepared in accordance with the current edition of the RICS Code of Measuring Practice.
© Fulham Performance





The Global 1
23 Berkeley Square
London W1J 6JE
T: +44 (0)20 3355 0191 W: www.theglobal1.com