




Nottingham Place, Marylebone

Price £1,100 pw





This superbly located first floor, two bedroom apartment is in this red brick period building in the heart of fashionable Marylebone. This spacious apartment comprises large reception room with wooden flooring and access to kitchen through double doors, two large double bedrooms, 1 bathroom and 1 guests WC.



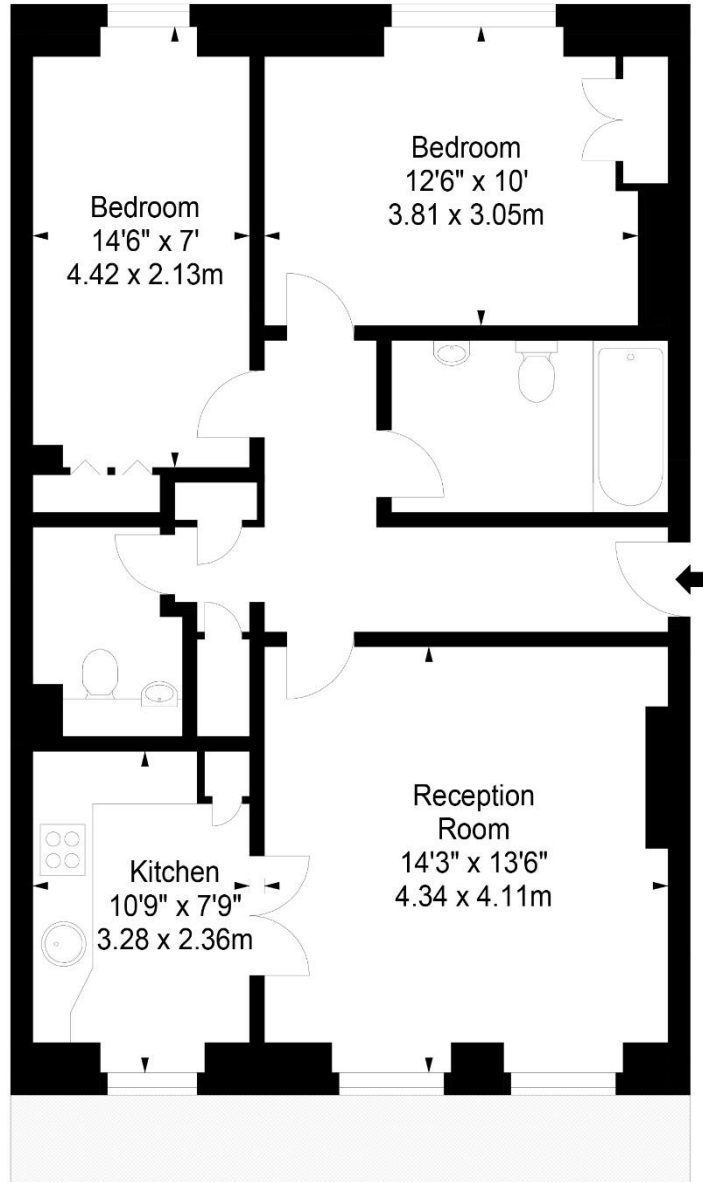


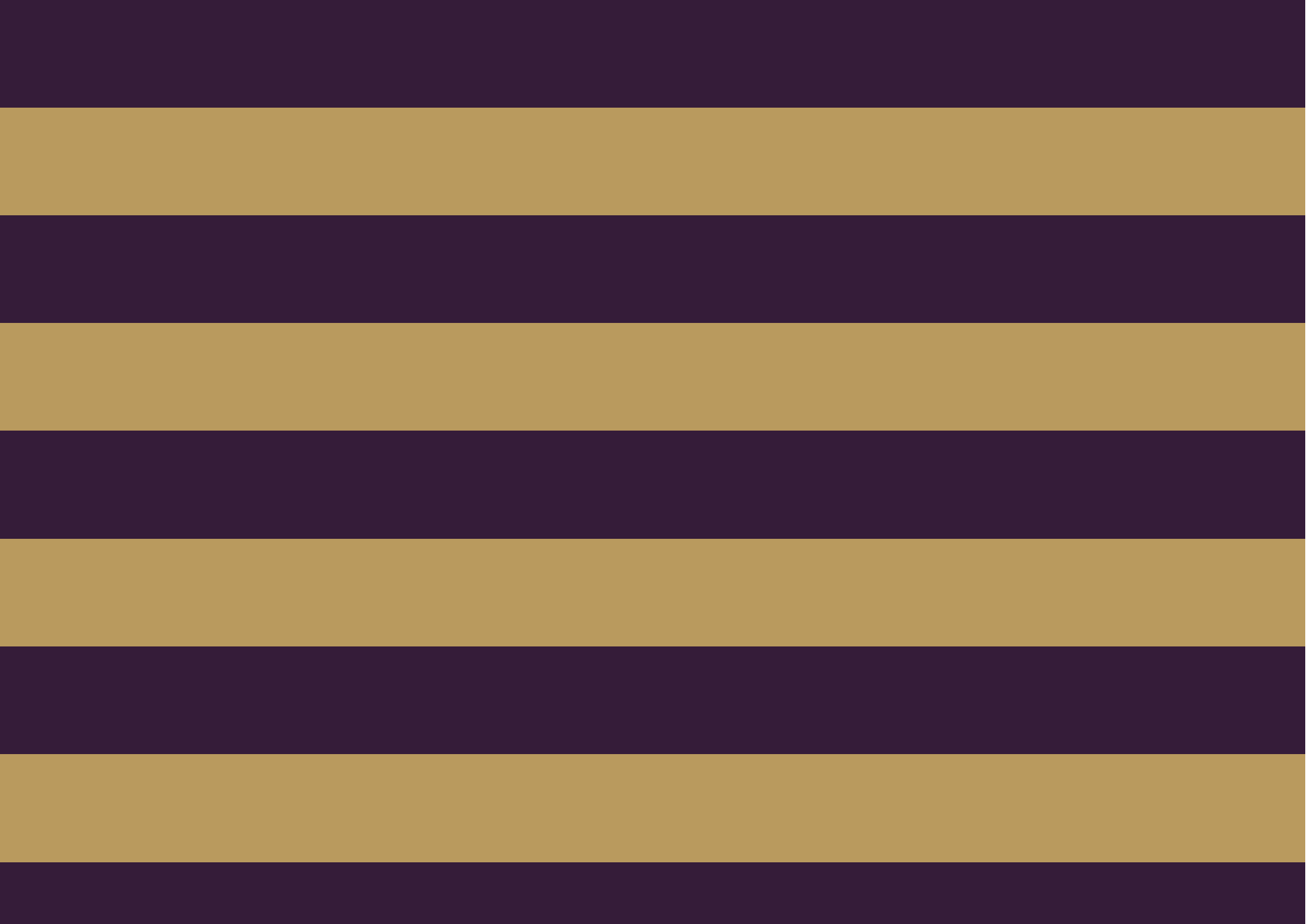


Features

- 2 Bedrooms
- 1 Bathroom
- 1 Living room
- Lift
- Porter









The Global 1
23 Berkeley Square
London W1J 6JE
T: +44 (0)20 3355 0191 W: www.theglobal1.com