




Merchant Square, Paddington

Price £1,590 pw





This apartment steals the show with amazing views from its beautiful south facing balcony. Along with this comes a stunning, spacious (912sq ft) interior designed apartment, set within the heart of the Paddington Basin and close to the popular West End Quay.

The apartment is situated on the 14th floor of this prestigious building which features concierge service, lift service and secure underground parking.

The spacious and bright apartment comprises a beautiful reception room with a new and modern fitted open plan kitchen, three large bedrooms and two bathrooms.

The apartment offers easy access to superb transport links such as Paddington Train Station (Bakerloo, Hammersmith & City, Circle, District lines and Heathrow express) and Edgware Road (Circle, District and Bakerloo lines).



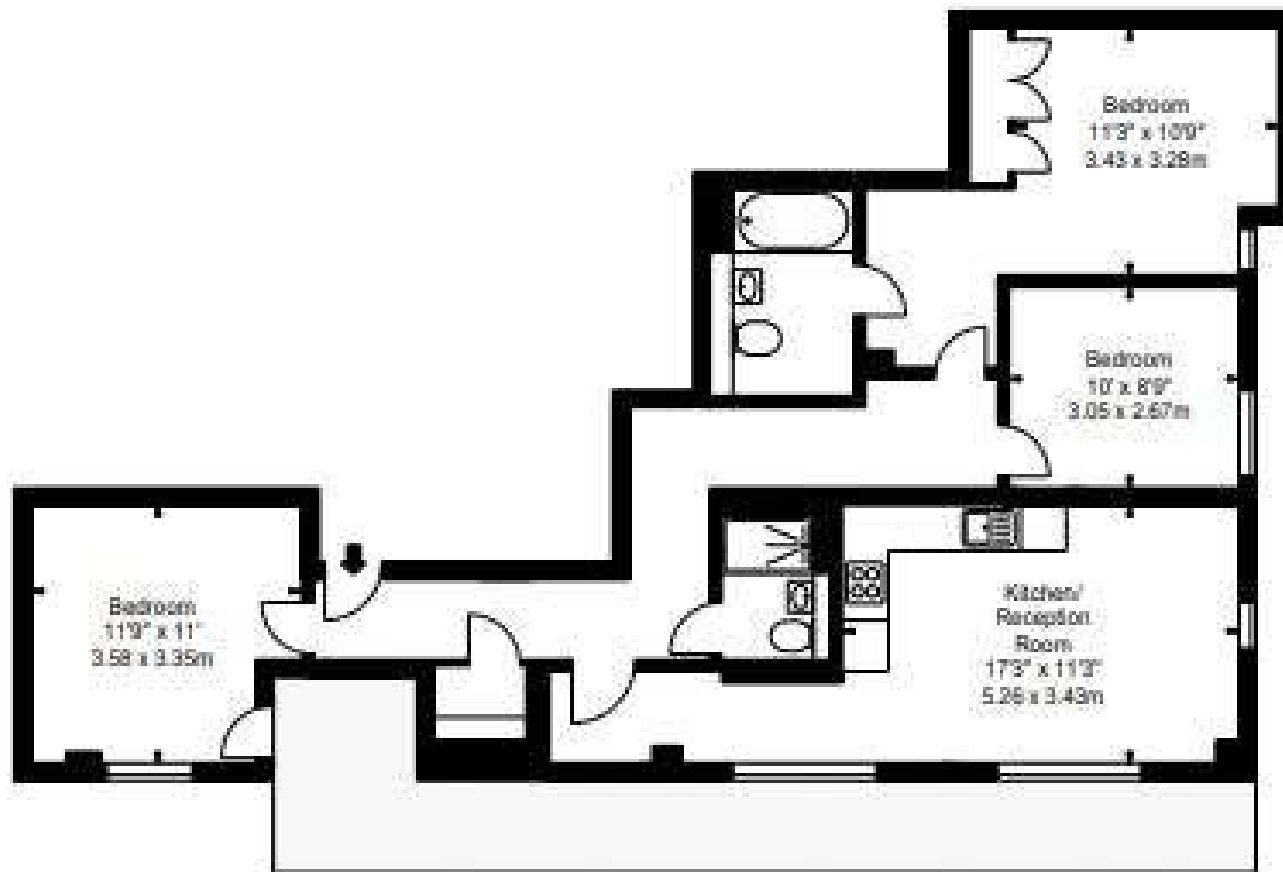


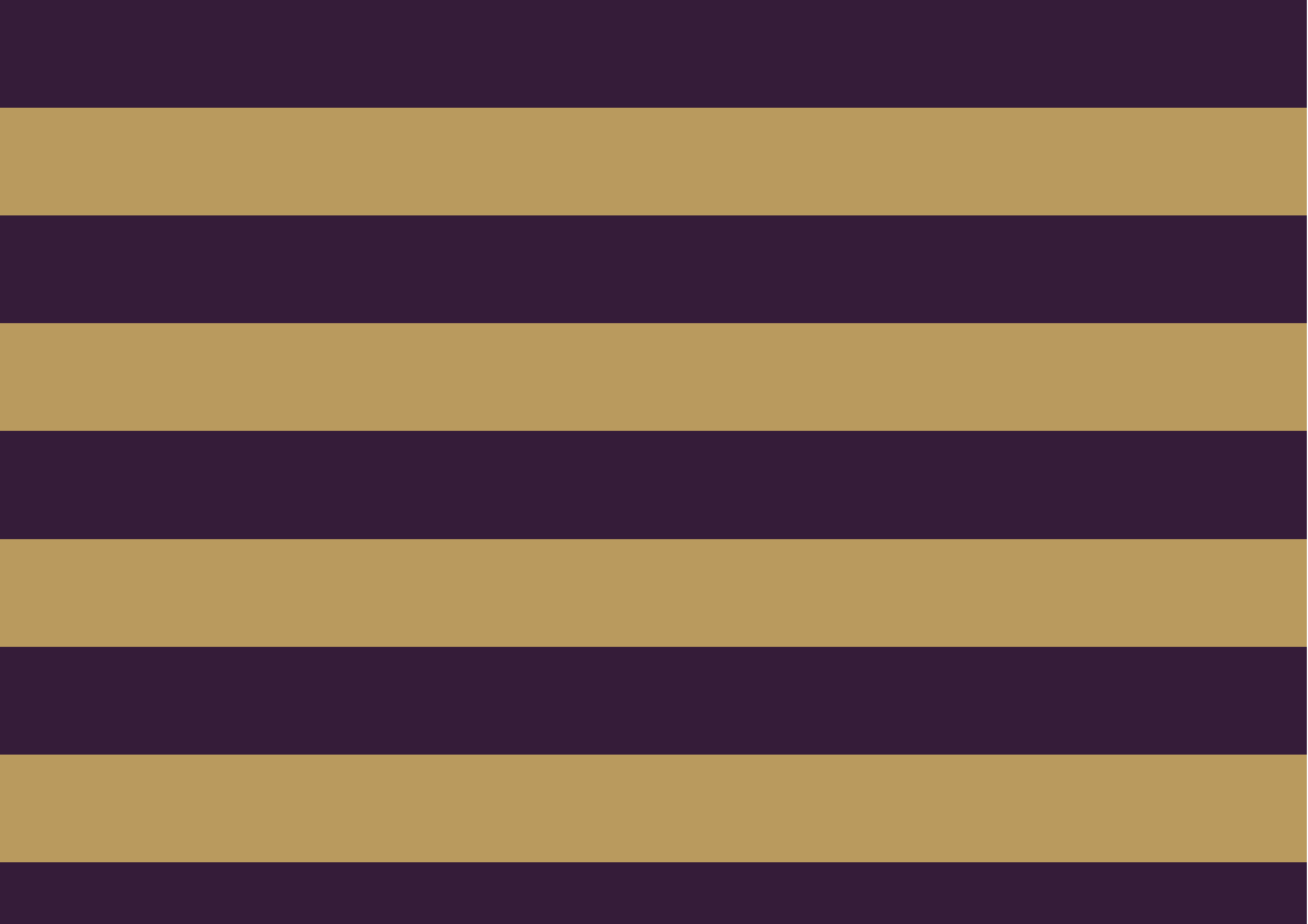


Features

- 3 Bedrooms
- 2 Bathrooms
- 1 Living room
- Balcony
- Lift









Global 1
23 Berkeley Square
London W1J 6JE
T: +44 (0)20 3355 0191 W: www.theglobal1.com