



## **Fitzjohns Avenue, Hampstead**

Price £1,750 pw







Third floor 1,353 sq. ft. large four bedroom family flat which has been recently refurbished is located in a lovely area of Hampstead. This property features four double bedrooms, two bathrooms, a bright reception room and a fully-fitted kitchen.

**LOCAL AMENITIES:** This property is close to the amenities of Hampstead, Finchley Road and Belsize Park, which has a good range of shops, bars and restaurants. Only moments from the property is the o2 centre, which has a range of clothing stores, restaurants, a fitness centre and a cinema.

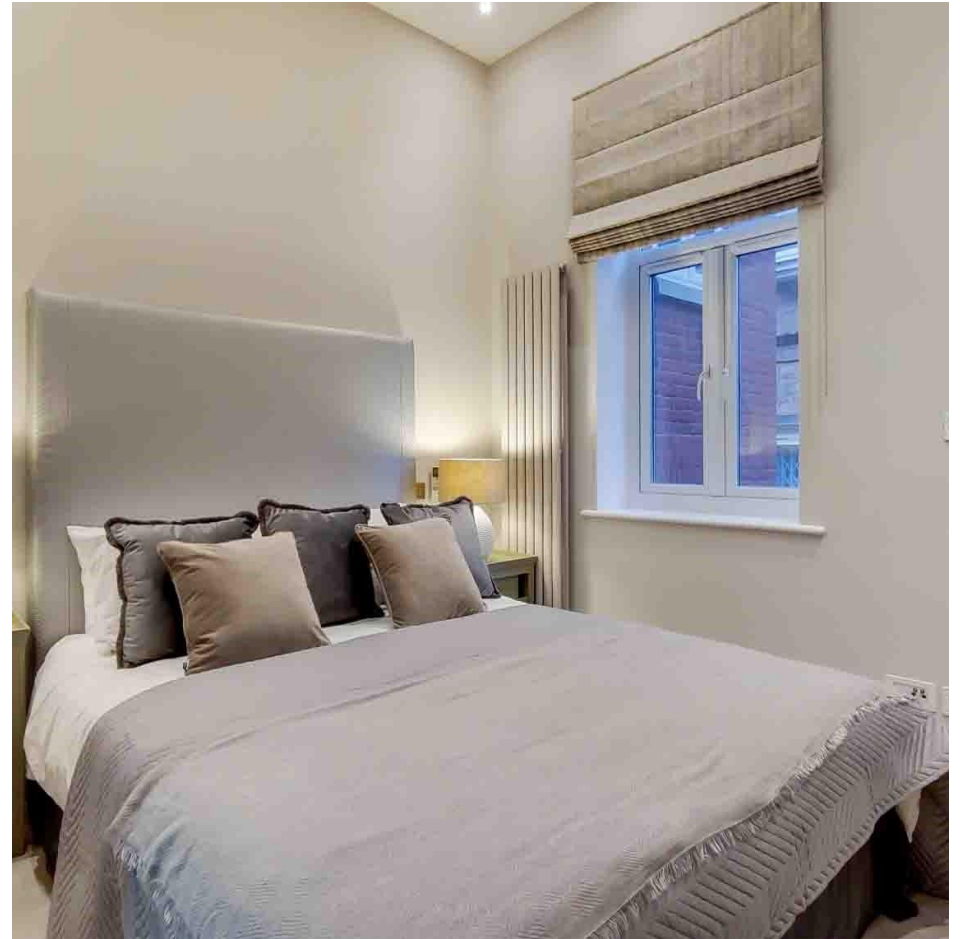
**LOCAL TRANSPORT LINKS:** The nearest underground stations are Hampstead underground station (Northern Line) and Belsize Park underground station (Northern Line) as well as being only a short walk to Finchley Road underground station (Jubilee and Metropolitan Line). For similar rental properties, please visit our website.



Automatic  
Door







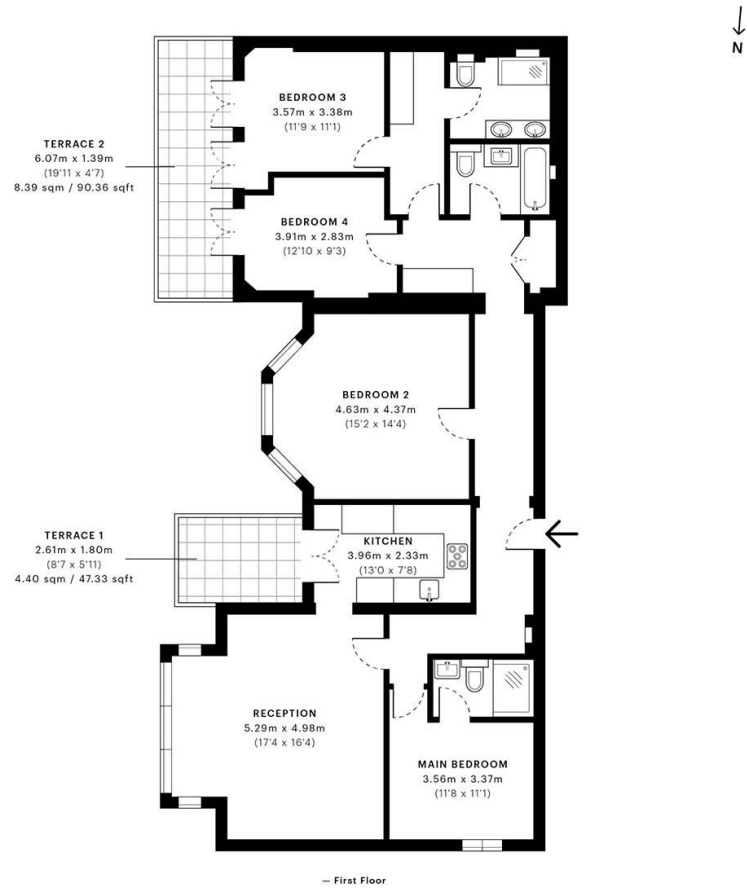


## *Features*

- 4 Bedrooms
- 2 Bathrooms
- 1 Living room
- Garden







**GROSS INTERNAL AREA (GIA)**  
The footprint of the property  
126.17 sqm / 1358.08 sqft

**NET INTERNAL AREA (NIA)**  
Excludes walls and external features.  
Includes washrooms, restricted head height  
116.88 sqm / 1256.09 sqft

**EXTERNAL STRUCTURAL FEATURES**  
Balconies, terraces, verandas etc.  
12.79 sqm / 137.67 sqft

**RESTRICTED HEAD HEIGHT**  
Limited use area under 1.9 m  
0.00 sqm / 0.00 sqft

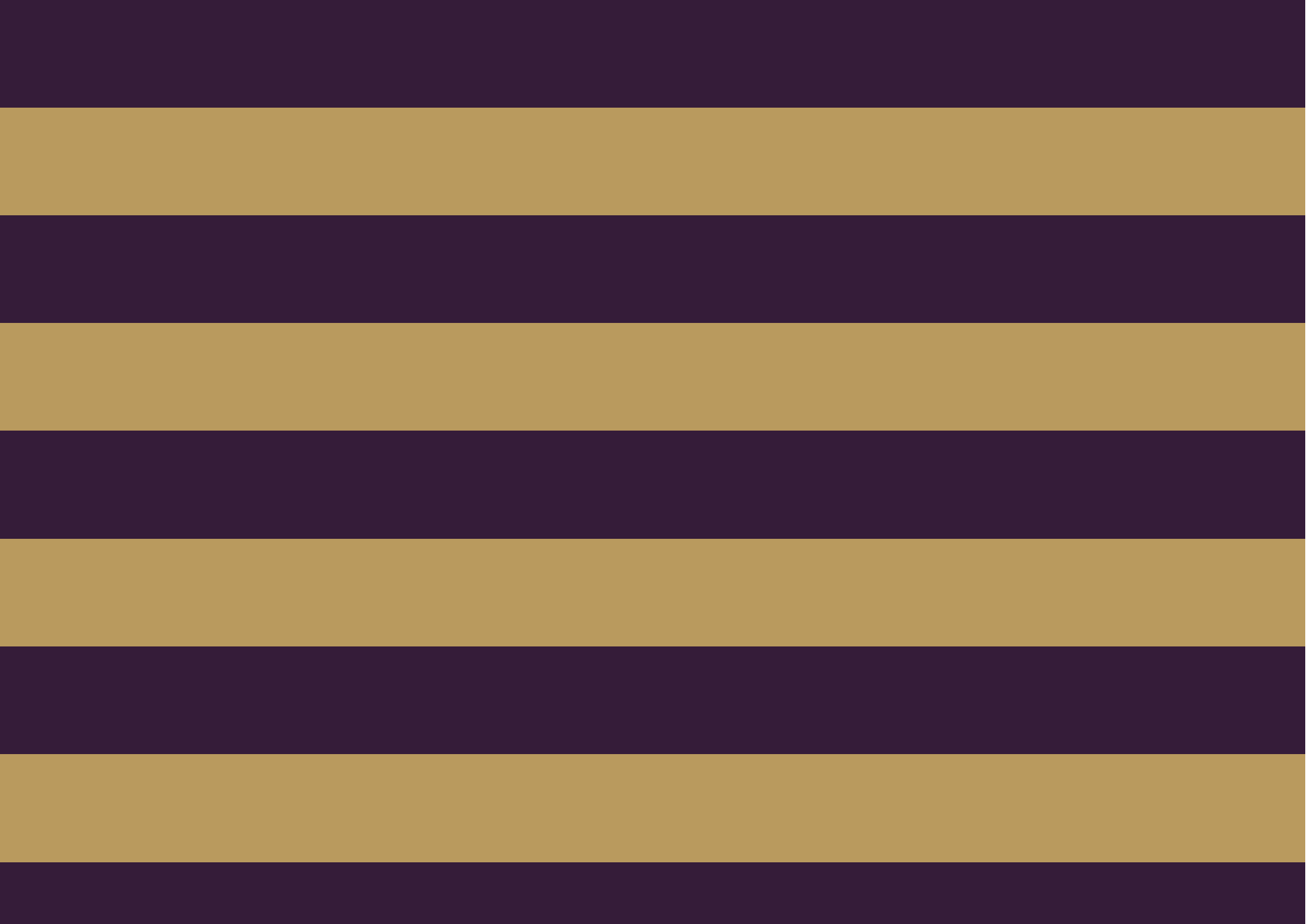


Spec Verified floor plans are produced in accordance with Royal Institution of Chartered Surveyors' Property Measurement Standards. Plots and gardens are illustrative only and excluded from all area calculations. Due to rounding, numbers may not add up precisely. All measurements shown for the individual room lengths and widths are the maximum points of measurements captured in the scan.

IPMS 3B RESIDENTIAL 140.09 sqm / 1507.92 sqft  
IPMS 3C RESIDENTIAL 131.40 sqm / 1414.38 sqft

SPEC ID: 5f352c7b352000dbc977968







The Global 1  
23 Berkeley Square  
London W1J 6JE  
T: +44 (0)20 3355 0191 W: [www.theglobal1.com](http://www.theglobal1.com)