



## **Park Mansions, Knightsbridge**

Price £1,795 pw





Introducing a luxurious residence in the heart of Knightsbridge, the Park Mansion offers a refined living experience with two spacious bedrooms with plush carpets installed, two elegant bathrooms, and a welcoming large open plan reception room with a dining area.

This exclusive property is located close to the vast amenities of Knightsbridge, Sloane Street and Brompton Road; which has a large number of bars, restaurants and retail outlets including the famous Harrods department store. It is also a very short walk from Kensington Gardens and Hyde Park.





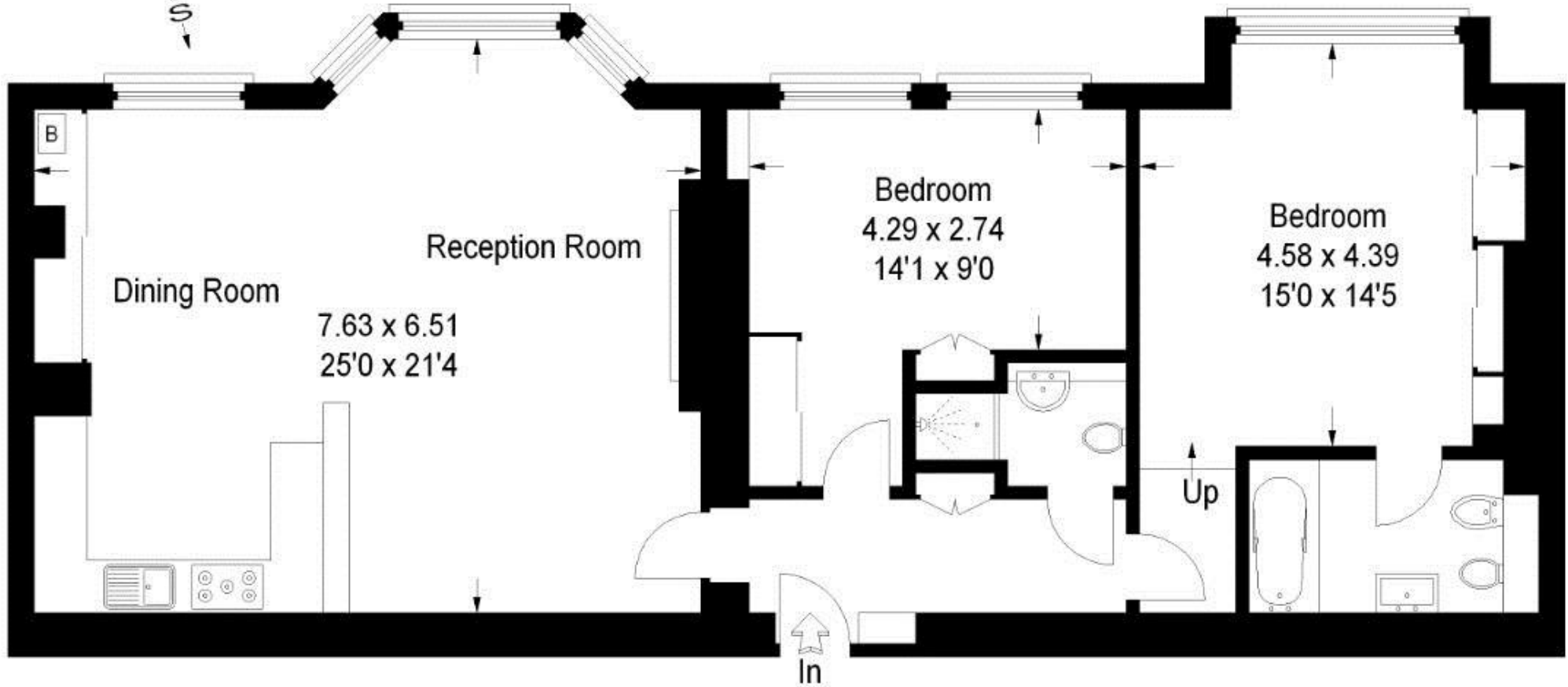
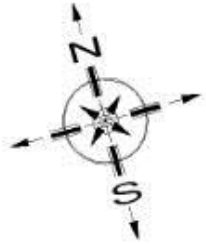


## ***Features***

- 2 Bedrooms
- 2 Bathrooms
- 1 Living room
- Lift
- Porter

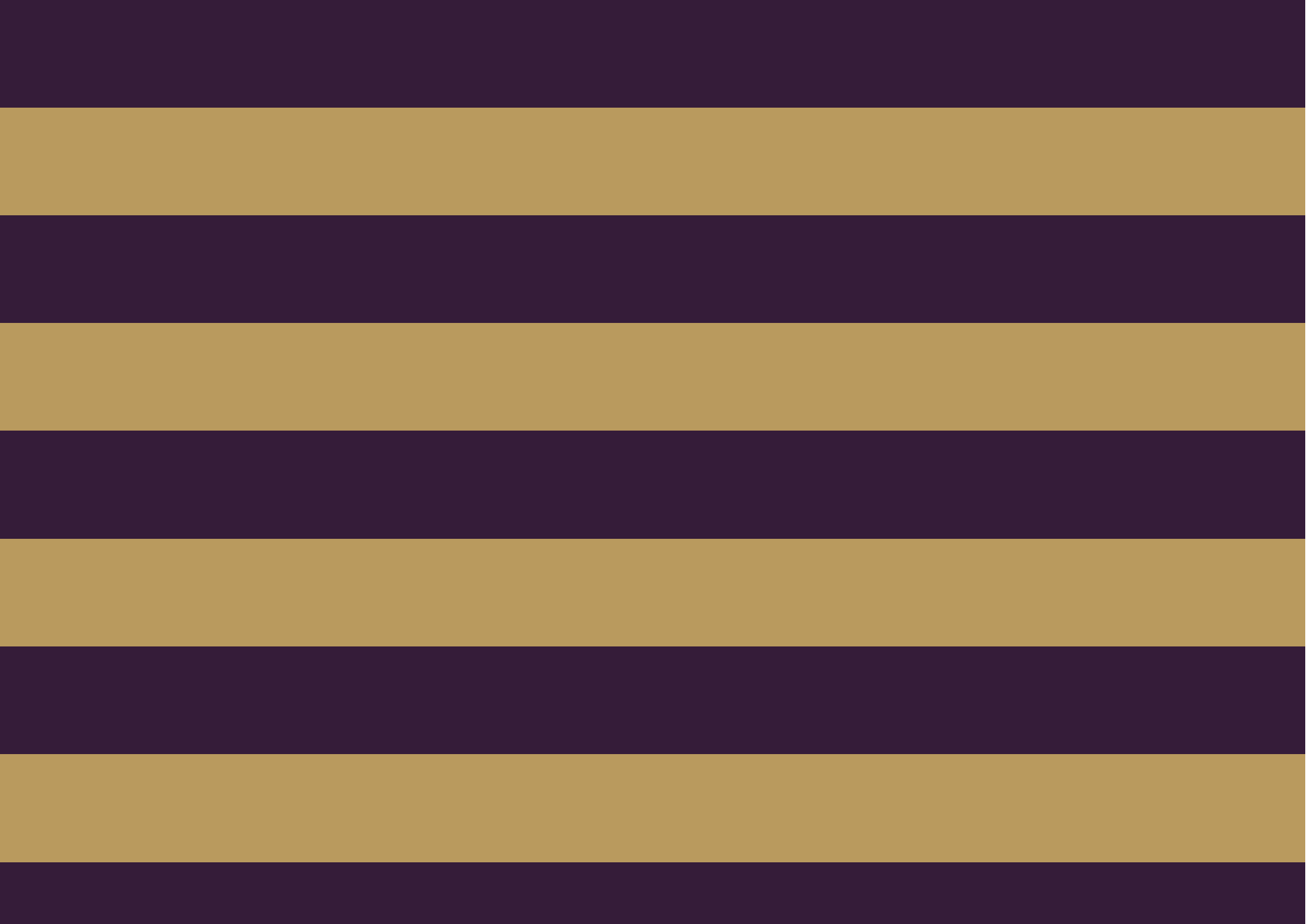
# Park Mansions, SW1X

Approximate Gross Internal Area = 102 sq m / 1098 sq ft



FLOORPLANZ © 2013 0845 6344080 Ref 117588

This plan is for layout guidance only. Not drawn to scale unless stated. Windows & door openings are approximate. Whilst every care is taken in the preparation of this plan, please check all dimensions, shapes & compass bearings before making any decisions reliant upon them.







The Global 1  
23 Berkeley Square  
London W1J 6JE  
T: +44 (0)20 3355 0191 W: [www.theglobal1.com](http://www.theglobal1.com)