



Harley Road, Swiss Cottage

Price £2,995 pw



Superb four double bedroom modern town house in an amazing location just minutes of Swiss Cottage tube station and within walking distance to Primrose Hill and the amenities of Finchley Road. Arranged over 3 floors the property comprises four double bedrooms all with en-suite bathroom, two large reception rooms, a good size study, separate kitchen and guest WC. It further benefits from an abundance of natural light, ample storage space, private parking and private garden.

LOCAL AMENITIES: The property is set in prime residential area close to vibrant Primrose Hill, Englands Lane`s Tesco and trendy bars/restaurants. Swiss Cottage Library, the Community Gym and Swimming Centre, excellent state and private nurseries and schols are close by. Hampstead Village and Hampstead Heath, Camden High Street and Canal Walk are also within easy walking distance/bus ride away.

LOCAL TRANSPORT LINKS: The property is equidistant walk to Northern Line to Euston/Kings Cross and the City (Belsize Park/Chalk Farm stations), and Jubilee Line to Canary Wharf (Swiss Cottage station). For shopping, direct bus routes run to Westfield in the west, Brent Cross to the north, Oxford Street/Bond Street to the south.







Features

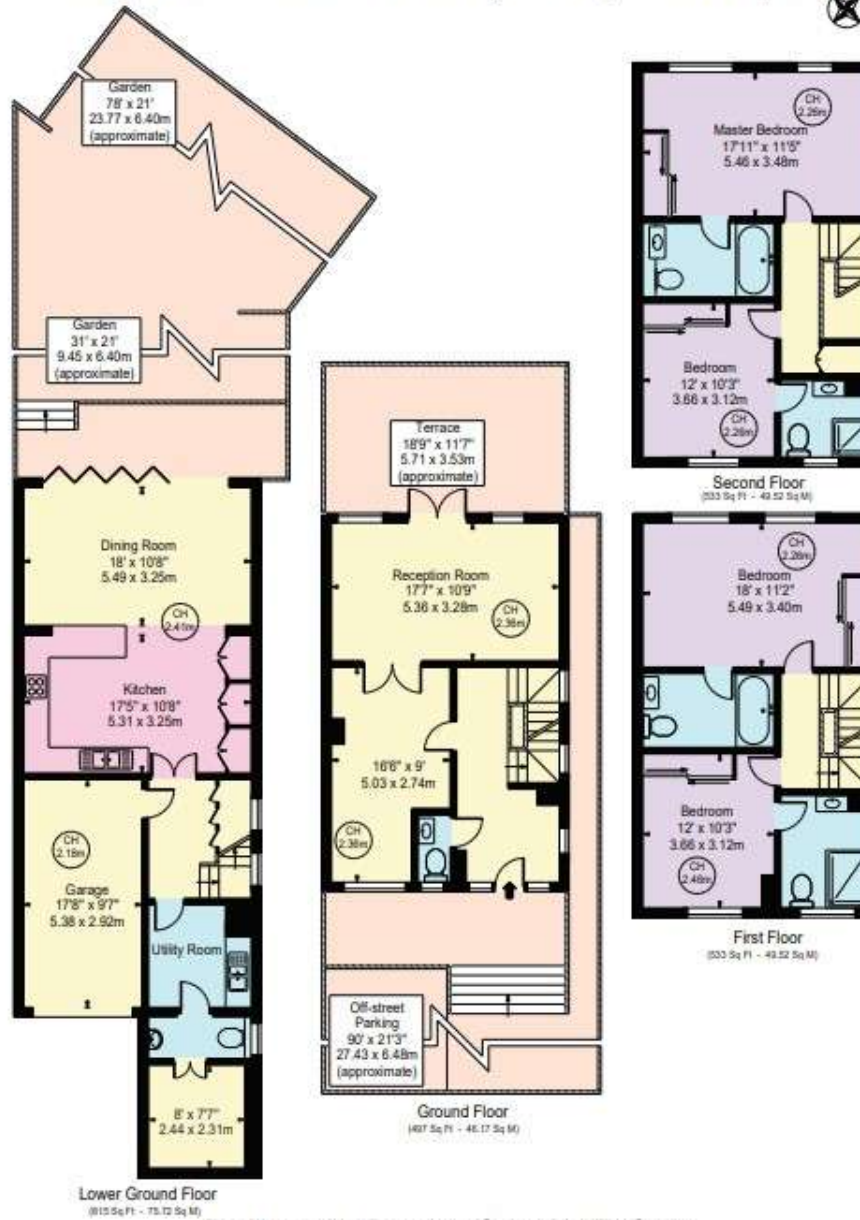
- 4 Bedrooms
- 6 Bathrooms
- 2 Receptions
- Garden



Harley Road

Approx. Total Internal Area 2378 Sq Ft - 220.92 Sq M
(Including Garage)

Approx. Gross Internal Area Of Garage 169 Sq Ft - 15.71 Sq M



For Illustration Purposes Only - Not To Scale





The Global 1
23 Berkeley Square
London W1J 6JE
T: +44 (0)20 3355 0191 W: www.theglobal1.com