




## Shepherd`s Close, Mayfair

Price £4,750 pw





Nestled in the prestigious Mayfair area, a beautifully presented four-bedroom house finished to an excellent standard with luxurious fixtures and fittings throughout. The residence boasts its prime location, 2 reception rooms, 4 bathrooms, a study room and a good-sized garden making it an ideal blend of comfort and convenience.

Shepherds Close is situated off Lees place, a short distance from Grosvenor Square. It is well-placed for the internationally renowned shops restaurants and amenities of Mayfair.









## *Features*

- 4 Bedrooms
- 4 Bathrooms
- 2 Reception



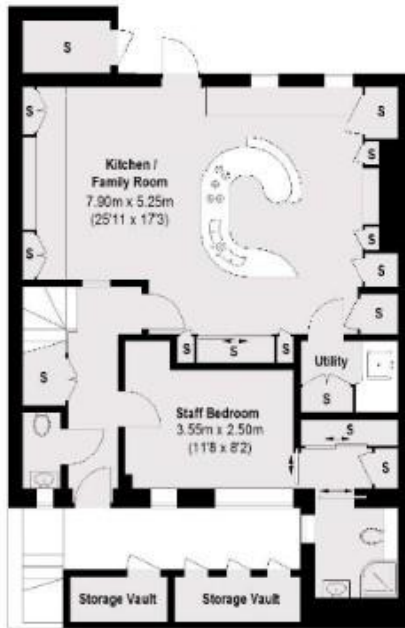




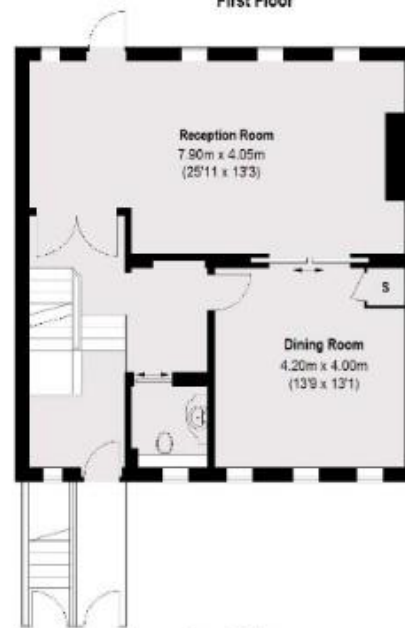
Second Floor



First Floor



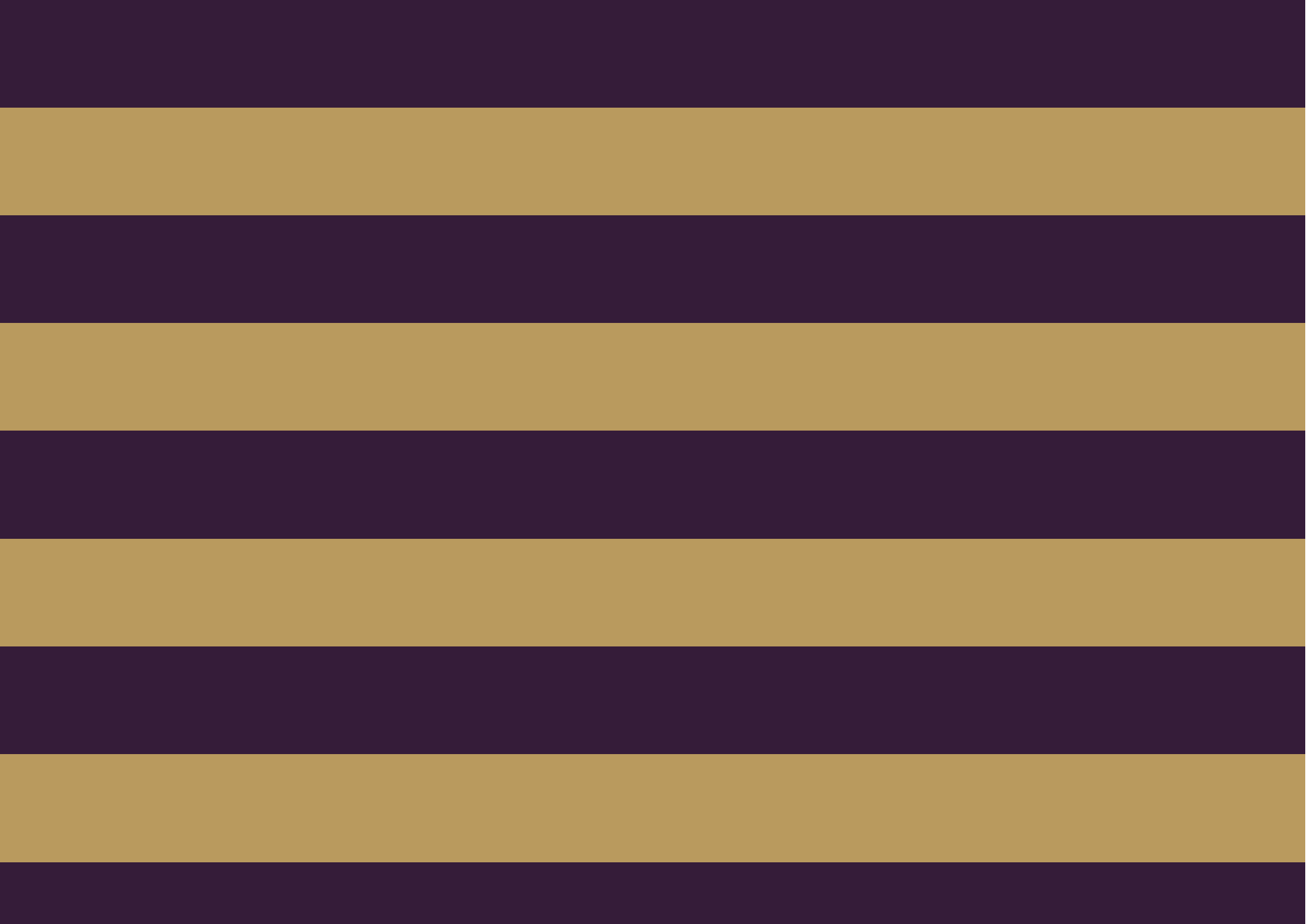
Lower Ground Floor



Ground Floor

Total area (approx.): 274.16 sq. m (2951 sq. ft)  
 Vault: 4.61 sq. m ( 50 sq. ft)







The Global 1  
23 Berkeley Square  
London W1J 6JE  
T: +44 (0)20 3355 0191 W: [www.theglobal1.com](http://www.theglobal1.com)