




Dorset Mews, Belgravia

Price £5,500 pw





Amazing three-bedroom house located in the magnificent area of Belgravia. This property features three bedrooms (all en-suite) which are located on the first and second floors, one large family room with a balcony presenting gorgeous views of the mews. Enjoy the separate bar/dining room, amazing for hosting guests, a large kitchen equipped for entertaining and a separate shower room. Further benefits include underfloor heating, air conditioning, underground parking, and porter.

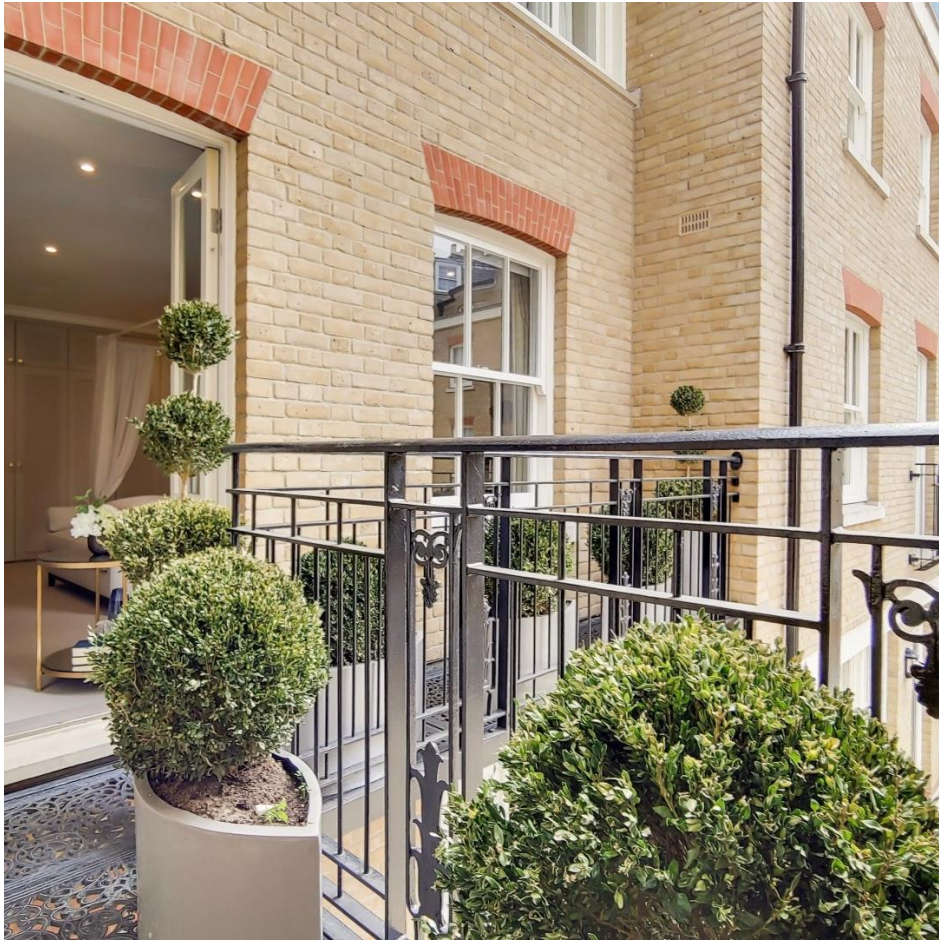
LOCAL AMENITIES:

The property is moments away from the amenities of Victoria which has a vast range of shops, bars and restaurants nearby are Buckingham Palace road and Green Park.

LOCAL TRANSPORT LINKS:

The property is located moments away from Victoria Tube Station (Victoria, Circle & District Lines) and Victoria Overground (National and Intercity Rail Services) as well as Victoria Coach station.







Features

- 3 Bedrooms
- 4 Bathrooms
- 1 Living room
- Parking
- Balcony



Dorset Mews, SW1X

CAPTURE DATE: 07/05/2021 LASER SCAN POINTS: 7,754,520

GROSS INTERNAL AREA

247.53 sqm / 2664.39 sqft

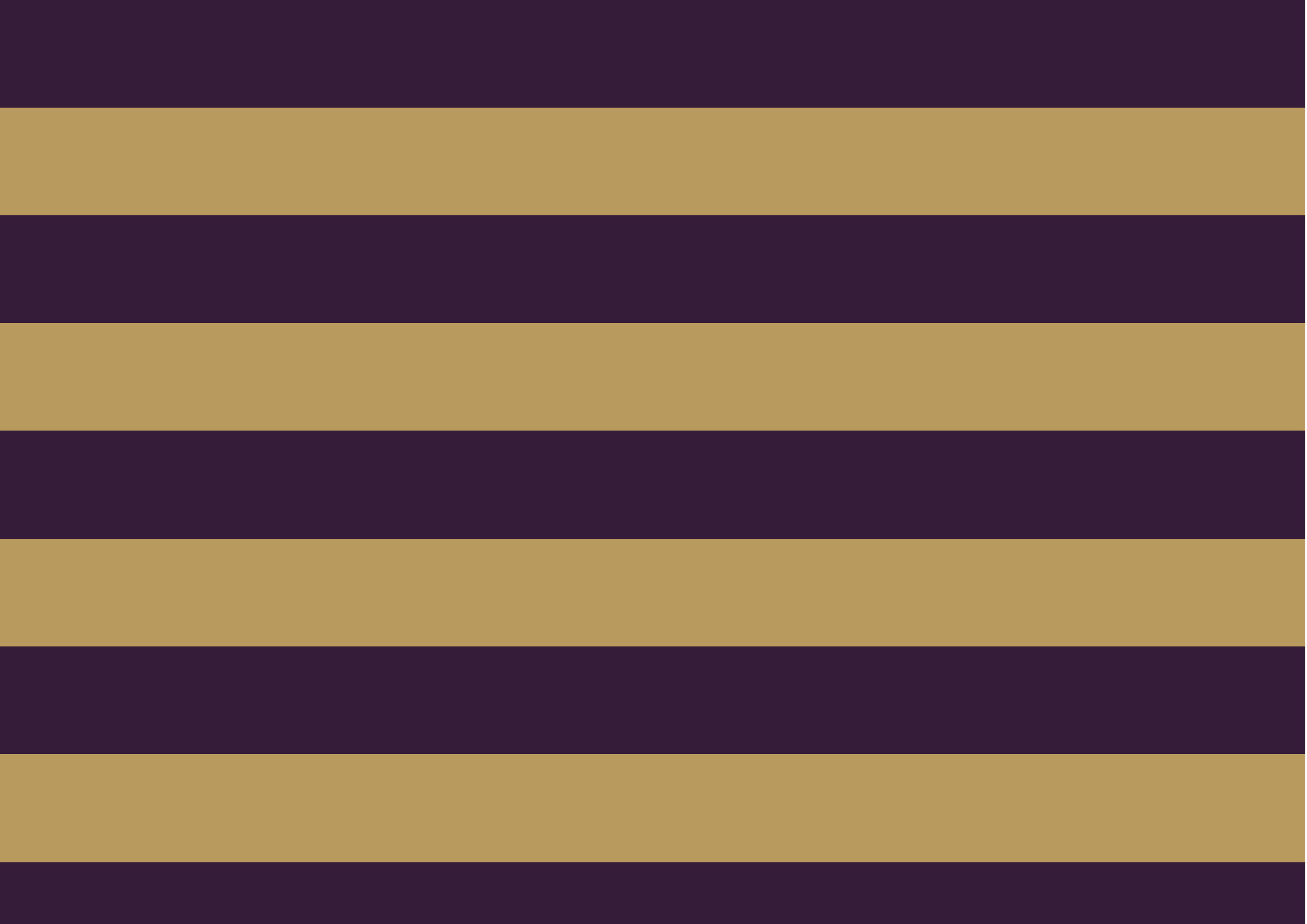


 GROSS INTERNAL AREA (GIA)
The footprint of the property
247.53 sqm / 2664.39 sqft

 NET INTERNAL AREA (NIA)
Excludes walls and external features
Includes mezzanines, restricted head height
219.29 sqm / 2360.42 sqft

 EXTERNAL STRUCTURAL FEATURES
Balconies, terraces, verandas etc.
5.43 sqm / 58.45 sqft

 RESTRICTED HEAD HEIGHT
Limited use area under 1.8m
1.37 sqm / 14.75 sqft





The Global 1
23 Berkeley Square
London W1J 6JE
T: +44 (0)20 3355 0191 W: www.theglobal1.com