



Rex Place, Mayfair

Price £5,500 pw



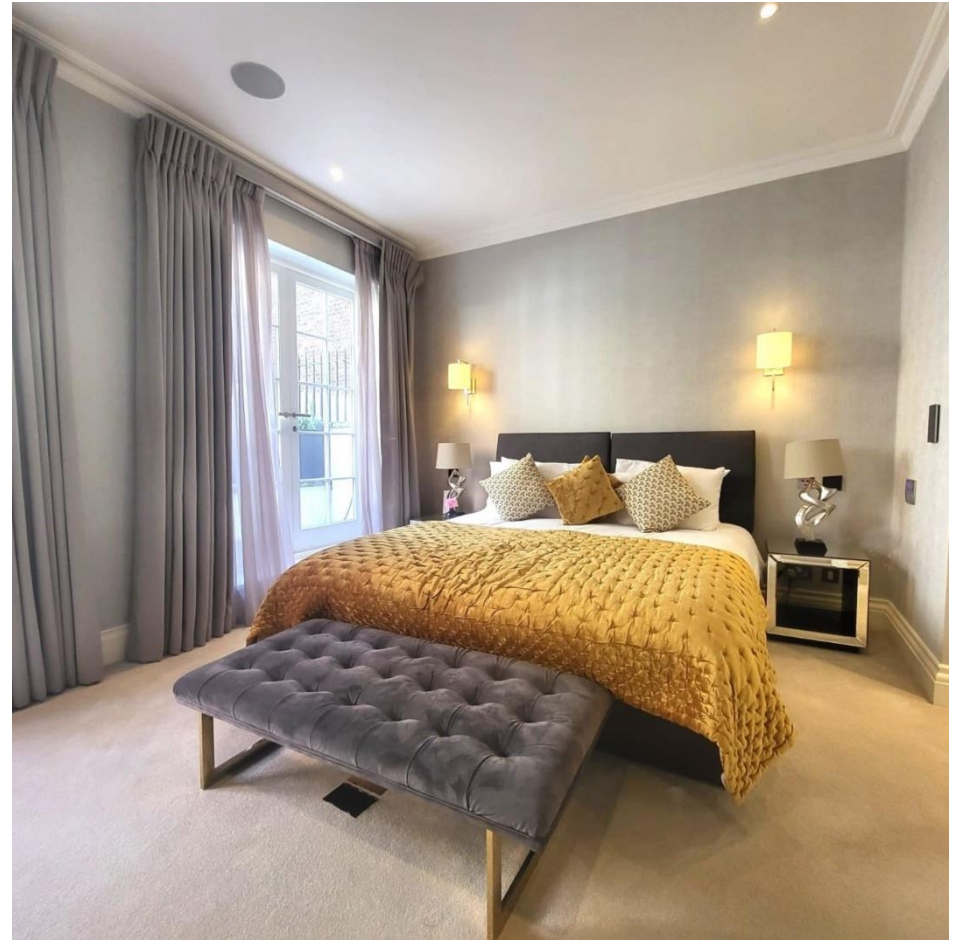


A beautifully restored four double bedroom townhouse of 2,399 sq.ft in this enviable Mayfair Village address.

Rex Place is perfectly located in one of Mayfair's most desirable locations, close to exclusive shops, restaurants and galleries. With its convenient location and generous living space, this property is ideal for those looking for a luxurious lifestyle in the heart of London.

Mayfair is one of London's most fashionable neighbourhoods, home to some of the capital's most exclusive shops and restaurants. Explore the boutiques on South Molton Street or browse the independent galleries on Cork Street. The world-famous department stores of Oxford Street are also nearby, as well as Hyde Park and Green Park, offering plenty of green spaces to relax in or take a leisurely stroll. The area is also very well served by public transport links with Bond Street



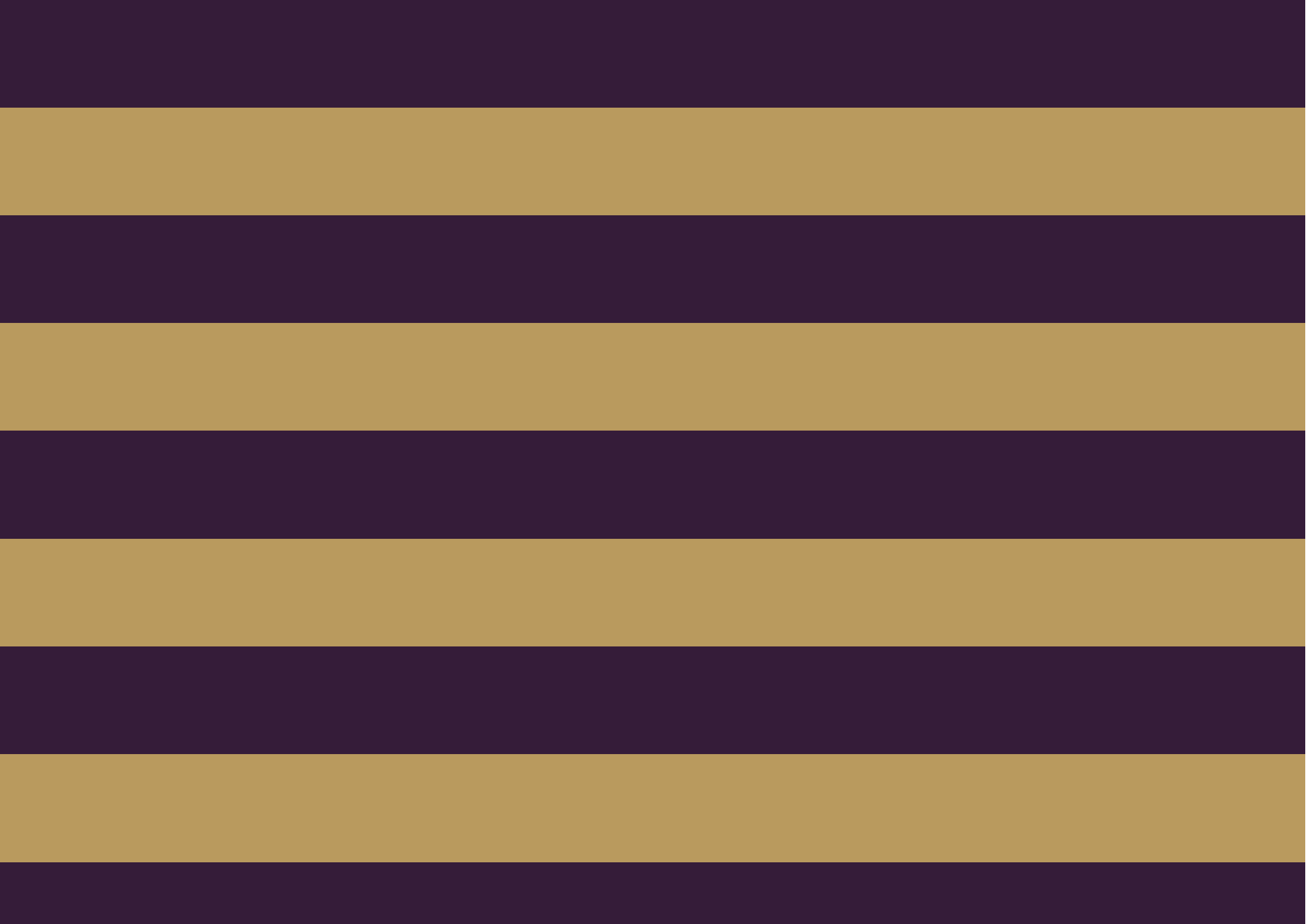




Features

- 4 Bedrooms
- 3 Bathrooms
- 1 Living room
- Balcony







The Global 1
23 Berkeley Square
London W1J 6JE
T: +44 (0)20 3355 0191 W: www.theglobal1.com