



## Hamilton Mews, Mayfair

Price £6,100 pw





An outstanding six bedroom apartment in exclusive residential block.

Benefiting from six en-suite bedrooms, two guest cloakroom, two fully fitted separate kitchen and two superb lounge.

Excellent location just a stone`s throw away from Hyde Park and Green Park, close to Oxford Street and Park Lane in the exclusive Mayfair district.

Also, a short Walk to the many fine Michelin Star Restaurants around Grosvenor Square and Berkeley Square.







## *Features*

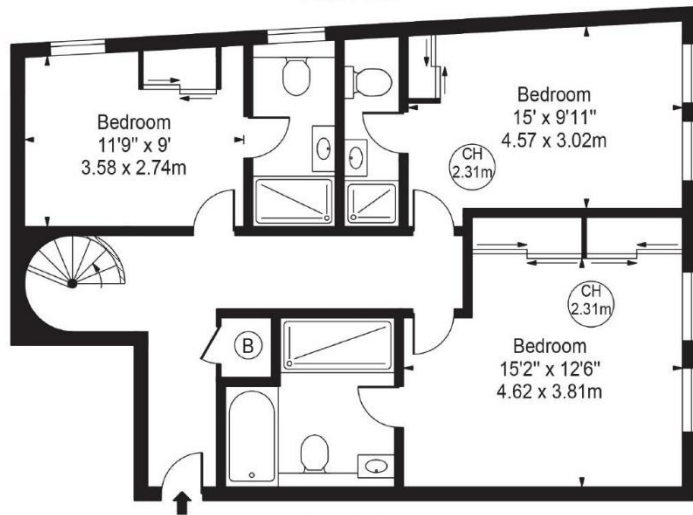
- 6 Bedrooms
- 6 Bathrooms
- 2 Receptions
- Porter
- Lift



Approx. Gross Internal Area 1683 Sq Ft - 156.36 Sq M



Fifth Floor

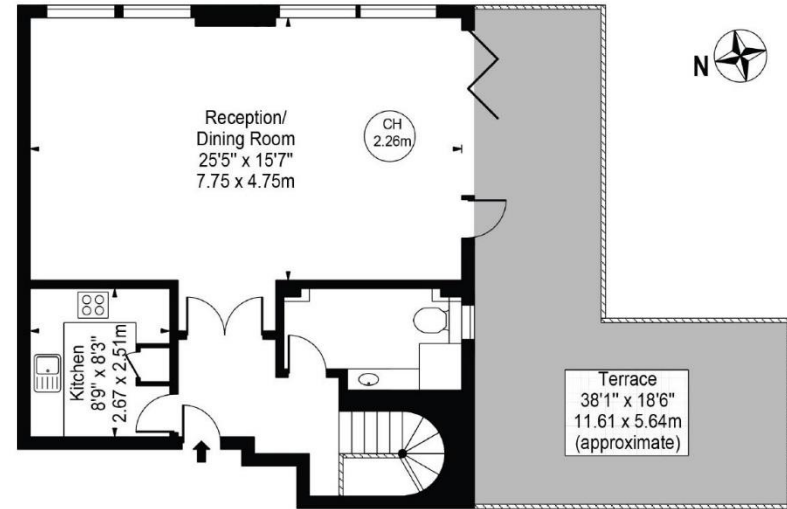


Fourth Floor

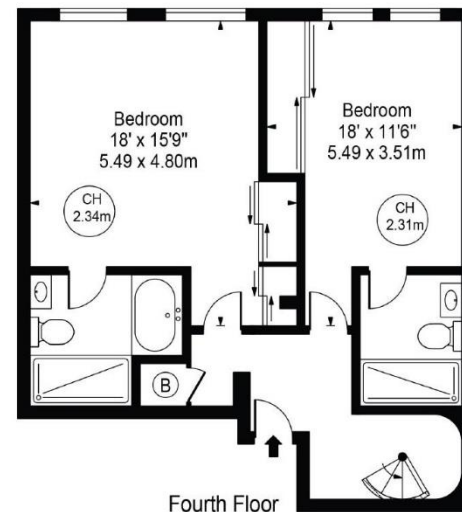
For Illustration Purposes Only - Not To Scale

This floor plan should be used as a general outline for guidance only and does not constitute in whole or in part an offer or contract. Any intending purchaser or lessee should satisfy themselves by inspection, searches, enquiries and full survey as to the correctness of each statement. Any areas, measurements or distances quoted are approximate and should not be used to value a property or be the basis of any sale or let.

Approx. Gross Internal Area 1284 Sq Ft - 119.29 Sq M



Fifth Floor

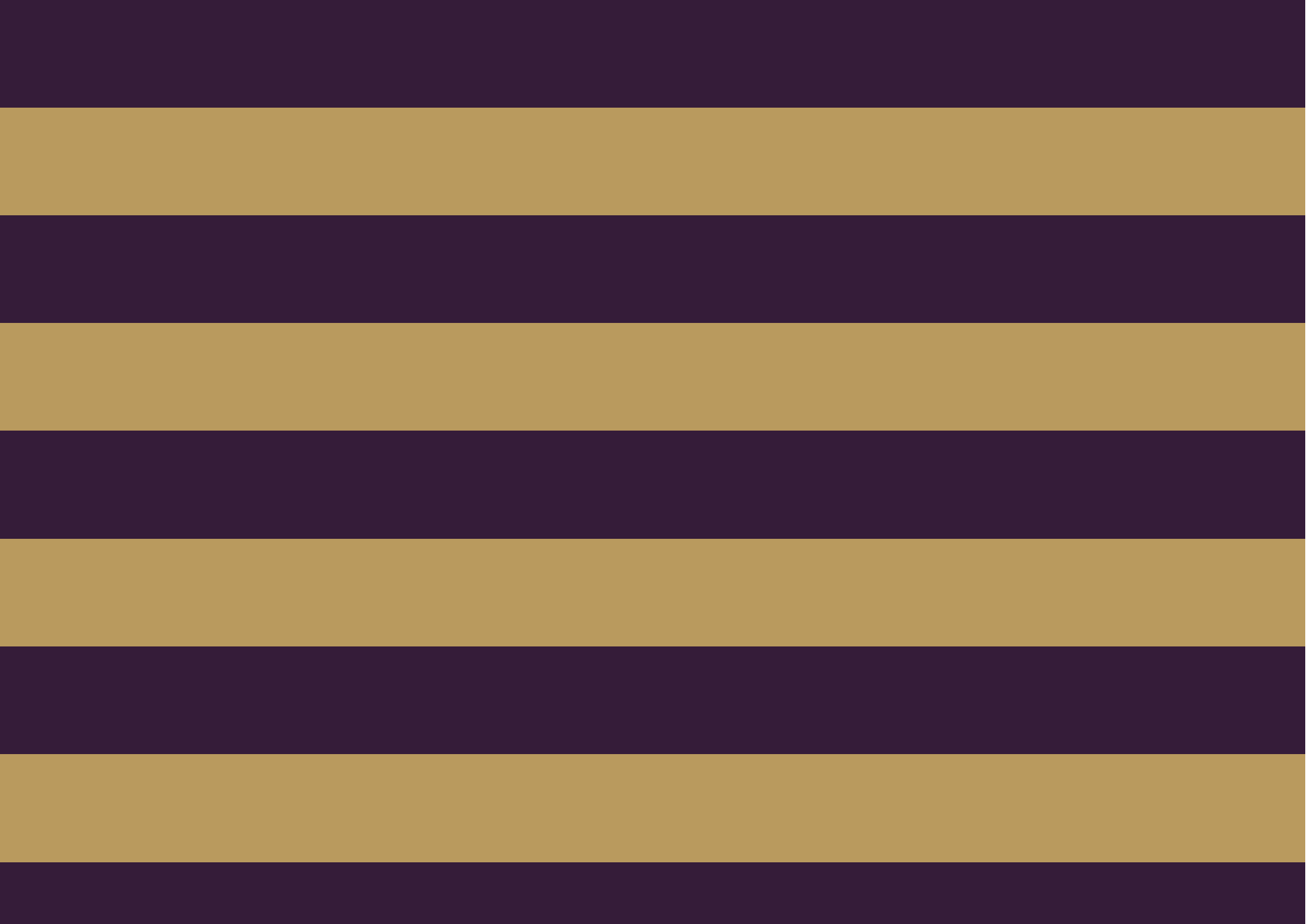


Fourth Floor

For Illustration Purposes Only - Not To Scale

This floor plan should be used as a general outline for guidance only and does not constitute in whole or in part an offer or contract. Any intending purchaser or lessee should satisfy themselves by inspection, searches, enquiries and full survey as to the correctness of each statement. Any areas, measurements or distances quoted are approximate and should not be used to value a property or be the basis of any sale or let.







The Global 1  
23 Berkeley Square  
London W1J 6JE  
T: +44 (0)20 3355 0191 W: [www.theglobal1.com](http://www.theglobal1.com)