




Princes Gate, Knightsbridge

Price £22,000 pw





A handsome six bedroom, four reception room Grade II listed stucco fronted house of magnificent proportion with lift and roof terrace, prestigiously situated in Knightsbridge.

Arranged over seven floors and providing in excess of 9400 square feet of versatile living space, this splendid family residence retains a host of exquisite period features including an imposing wrought iron grand staircase and ornate cornicing, ceiling plasterwork and architraves. Opulently appointed and impeccably presented, the property benefits from a fully integrated Lutron lighting system, air-conditioning and audio visual system. Other notable attributes are the grand entrance hall, capacious principal reception room, wonderful master bedroom suite, luxurious marble bathrooms, contemporary bespoke kitchen/dining room and generous roof terrace. Abundant storage is available in multiple private storage vaults to the lower ground floor.

The property is located amid the world class shopping and dining opportunities of Knightsbridge and South Kensington and neighbours the Natural History, Science and Victoria and Albert Museums, the Royal Albert Hall and the glorious verdant open space of Hyde Park. Excellent public transport links are readily at hand, the nearest tube station being South Kensington (Circle, District and Piccadilly lines).





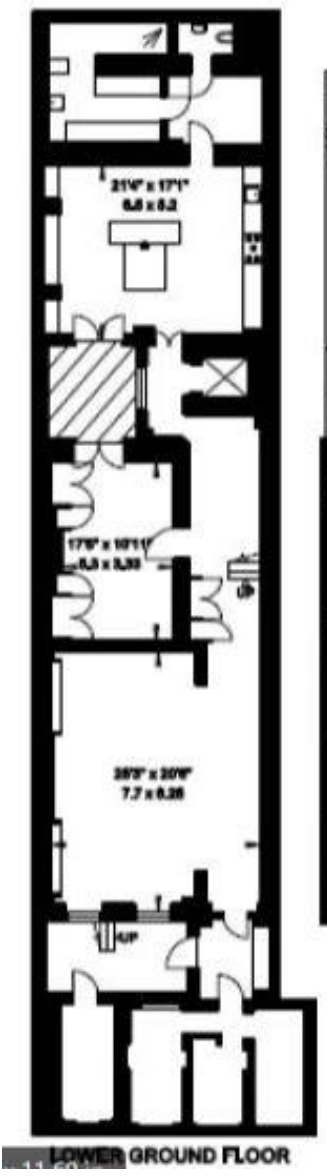


Features

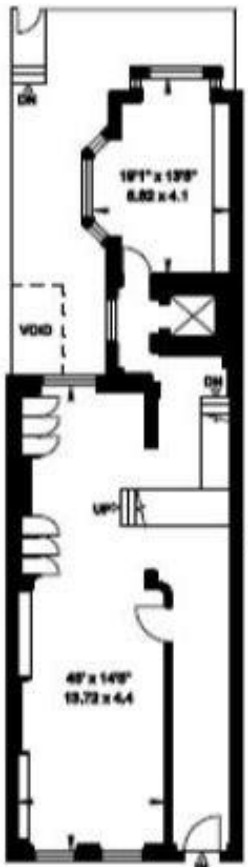
- 6 Bedrooms
- 7 Bathrooms
- 4 Living rooms



9430 sq. feet
 (Including Vaults & Shaded Lightwell)
 (Excluding Walled Terrace Level)
 Walled Terrace Level= 46 sq. metres
 497 sq. feet



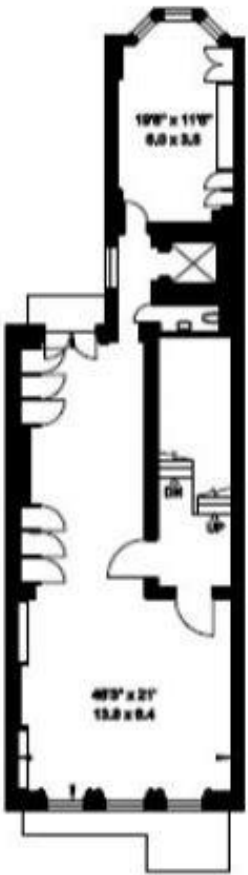
LOWER GROUND FLOOR



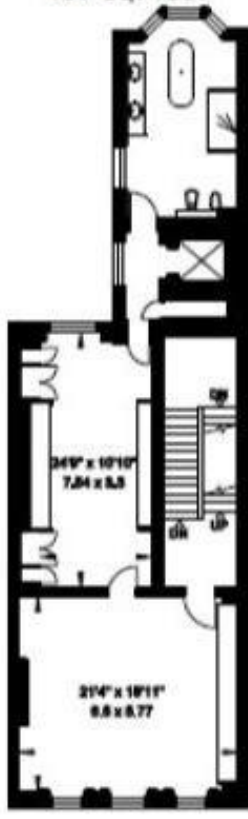
GROUND FLOOR



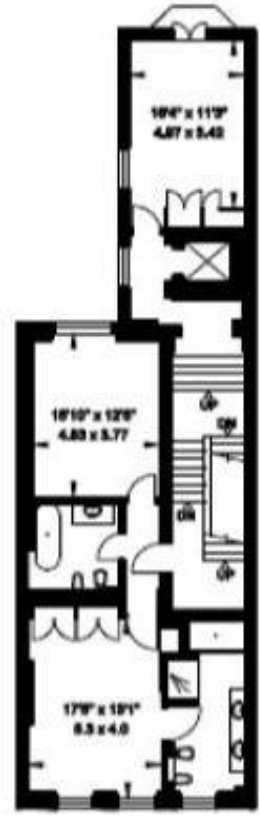
LOWER FIRST FLOOR



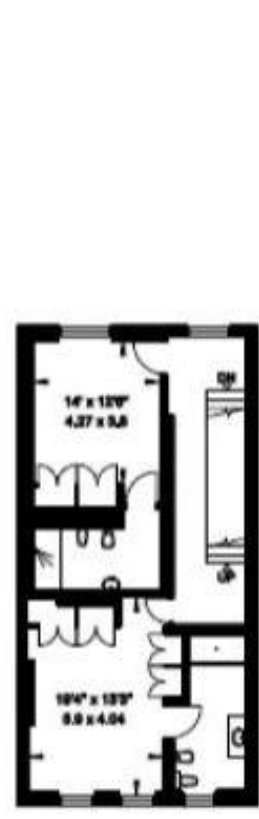
FIRST FLOOR



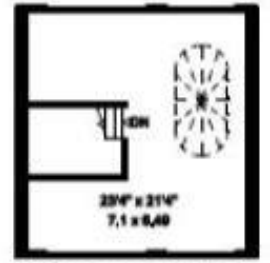
SECOND FLOOR



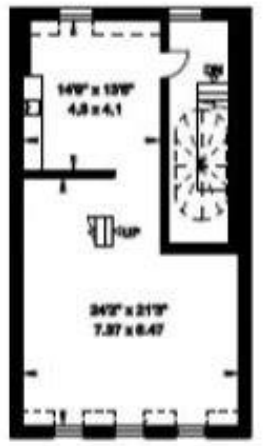
THIRD FLOOR



FOURTH FLOOR

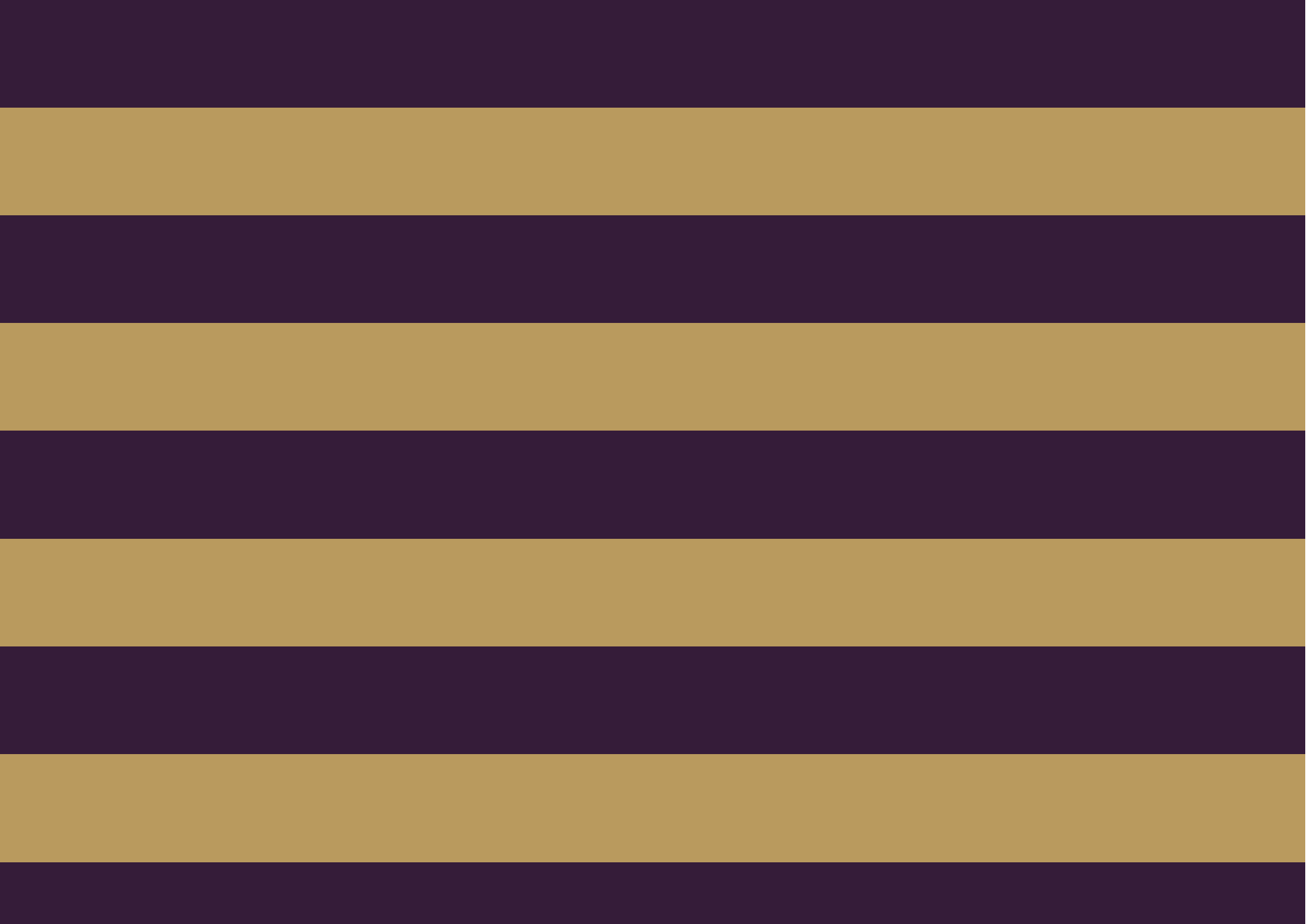


WALLED ROOF TERRACE



FIFTH FLOOR

Plans produced by
 PLANAIID: 020 8873 1961





The Global 1
23 Berkeley Square
London W1J 6JE
T: +44 (0)20 3355 0191 W: www.theglobal1.com