



Park Lane, Mayfair

Price £30,000 pw



Luxurious Four Double Bedrooms, Five Bathrooms Duplex Apartment located in prestigious Mayfair Park Lane, with beautiful views of Hyde Park.

Situated within this beautiful modernised Georgian period property, benefiting from an Internal lift to both floors, panning 5,921 Sq Ft (550 Sq M), air conditioning, high ceilings throughout, wide open entrance hallway, two large reception rooms, dining room, separate fully Integrated designer kitchen, cloakroom, courtyard / rear garden, four double bedrooms all with en-suite bathrooms, and utility room.

Located on this very south after Park Lane, Mayfair, directly in front of Hyde Park, short walk to the many fine cafes, Michelin star restaurants, and wine bars of Berkeley Square and Grosvenor Square. And, close proximity to the international designer boutique department stores of Selfridges, Harvey Nichols and Harrods.







Features

- 4 Bedrooms
- 5 Bathrooms
- 2 Living rooms

Transport link:

Park Lane, located in the heart of London's Mayfair district with the postcode W1K 7TH, is surrounded by excellent transport links:

Tube

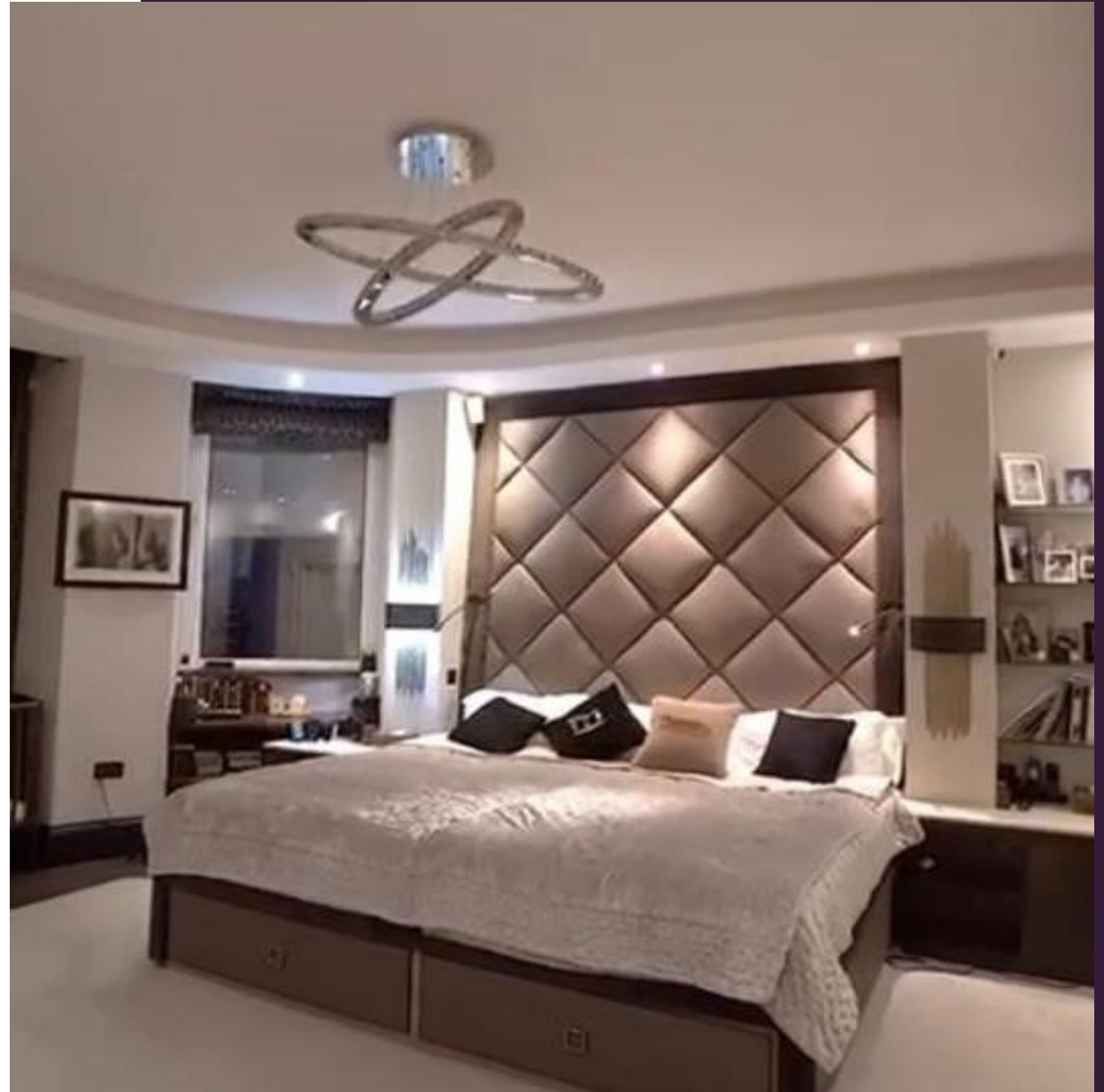
Marble Arch Station (Central line) is about a 5-minute walk north.
Hyde Park Corner Station (Piccadilly line) is about a 10-minute walk south.

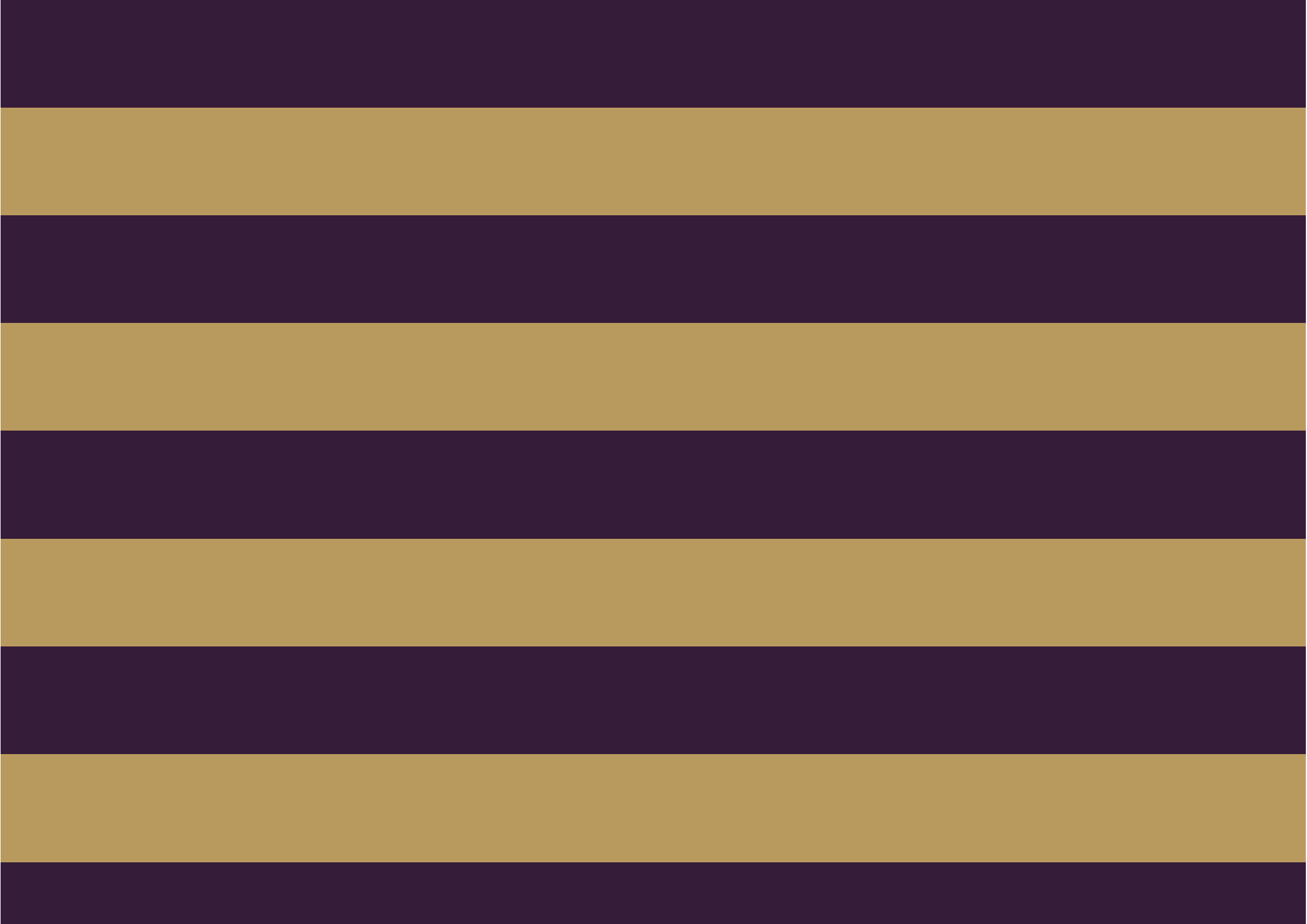
Bond Street Station (Central and Jubilee lines) is about a 15-minute walk east.

Green Park Station (Piccadilly, Jubilee, and Victoria lines) is also approximately a 15-minute walk south-east.

Rail

Paddington Station, Victoria Station and Marylebone Station.







REAL ESTATE & LIFESTYLE

The Global 1
23 Berkeley Square London W1J 6JE
T: +44 (0)20 3355 0191 W: www.theglobal1.com