




Park Mansions, Knightsbridge

Price £1,200,000





A spacious one bedroom apartment is now available for sale in a prestigious mansion block in the heart of Knightsbridge, with great views towards One Hyde Park.

The property consists of a spacious reception room, one large bedroom and a fully fitted separate kitchen.

Further benefits are a lift and 24 hour porter.

LOCAL AREA:

Situated in the very heart of Knightsbridge surrounded by Harrods, Harvey Nichols and One Hyde Park. The open spaces of Hyde Park are across the road and the world class shops and restaurants of Knightsbridge and Sloane Street are all within a short walk.

LOCAL TRANSPORT LINKS:

A short walk to both Knightsbridge underground station (Piccadilly line) and Sloane Square underground station (District and Circle lines).







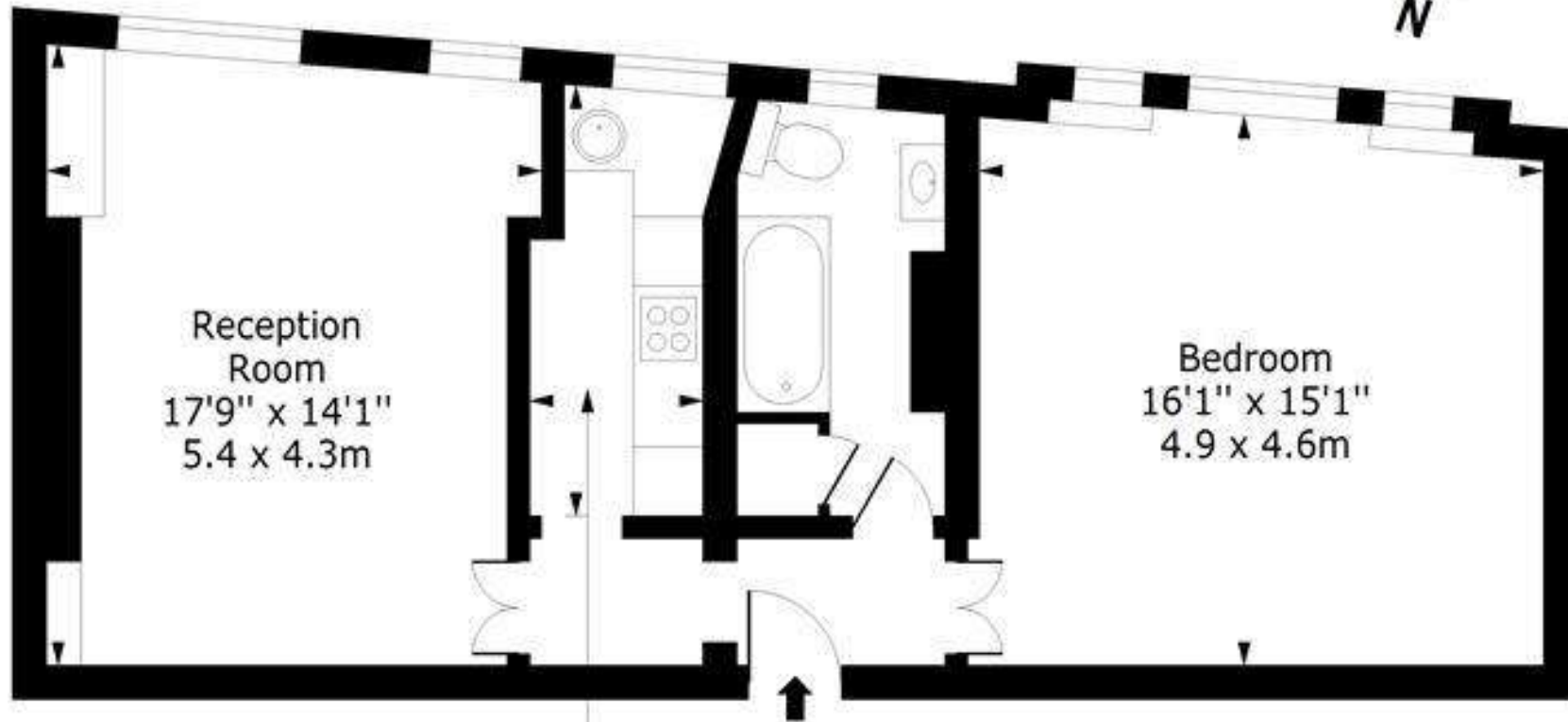
Features

- 1 Bedroom
- 1 Bathroom
- 1 Living room



Park Mansions, SW1X

Approx. Gross Internal Area 693 Sq Ft - 64.38 Sq M



Reception Room
17'9" x 14'1"
5.4 x 4.3m

Bedroom
16'1" x 15'1"
4.9 x 4.6m

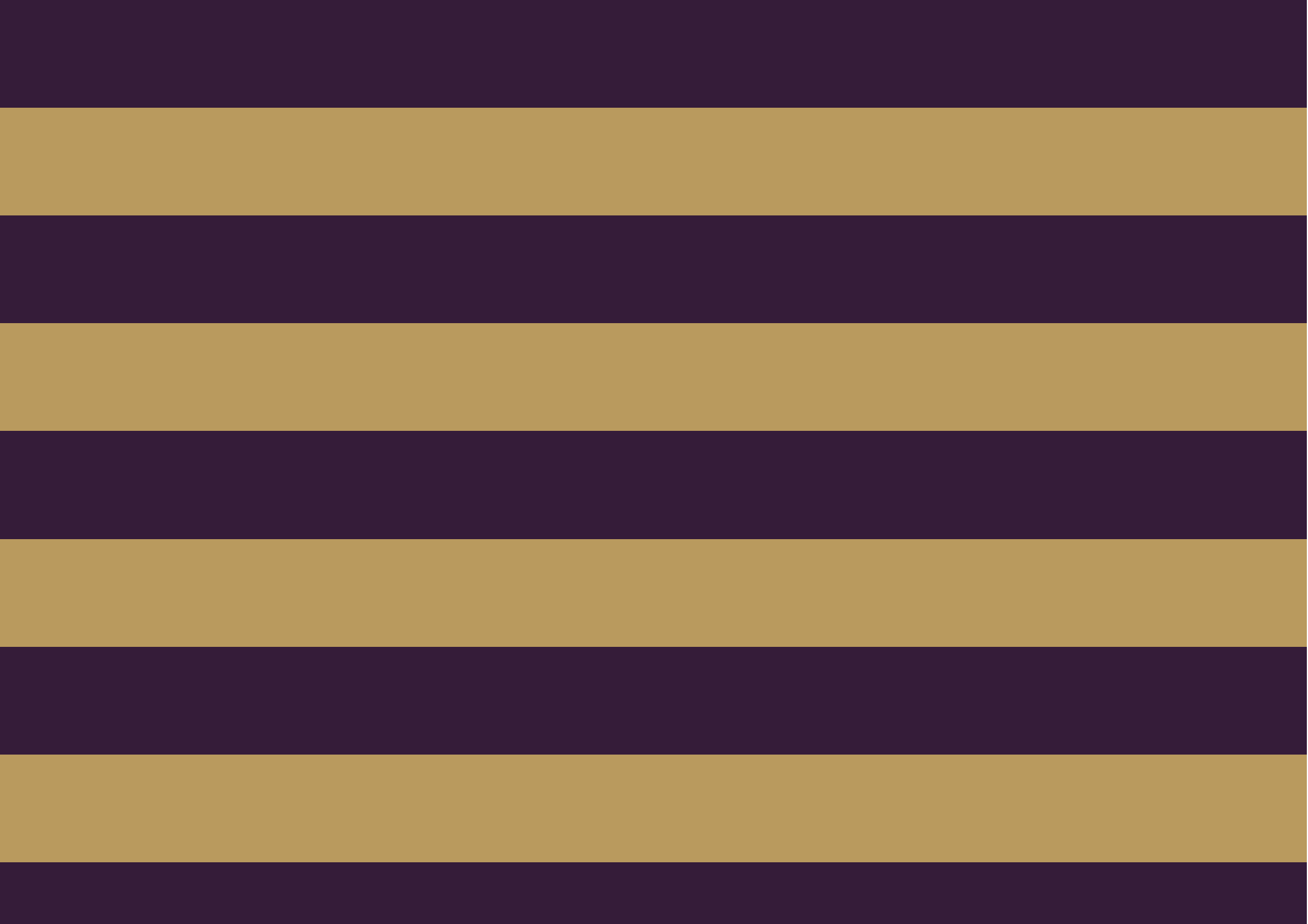
Kitchen
12'6" x 4'11"
3.8 x 1.5m

Sixth Floor

Floor Area 693 Sq Ft - 64.38 Sq M

For Illustration Purposes Only - Not To Scale

www.lpaplus.com





The Global 1
23 Berkeley Square
London W1J 6JE
T: +44 (0)20 3355 0191 W: www.theglobal1.com