



**Belmont Street,  
Chalk Farm**

Price £2,850,000





Set over five floors, the stunning development of Chappell Lofts boasts over 3,000 Square Foot of space exquisitely located in the heart of Camden.

The property offers four double bedrooms all with air conditioning, underfloor heating and all with ensembles, three enormous reception areas, as well as outside space, consisting of a private terrace and patio. In addition the entire top floor is available as either extra reception space or a master suite with ensuite opportunity and two balconies.

Belmont Street, in the heart of Chalk Farm and Camden. Chappell lofts is located at the centre North West London's most vibrant districts, with Primrose Hill Village and the serenity of Regent's Park on your doorstep.

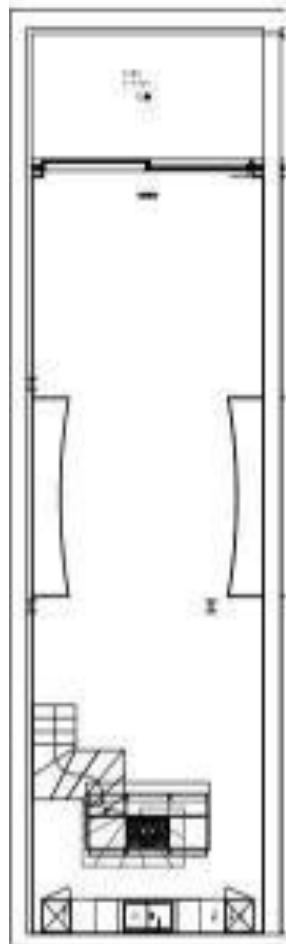




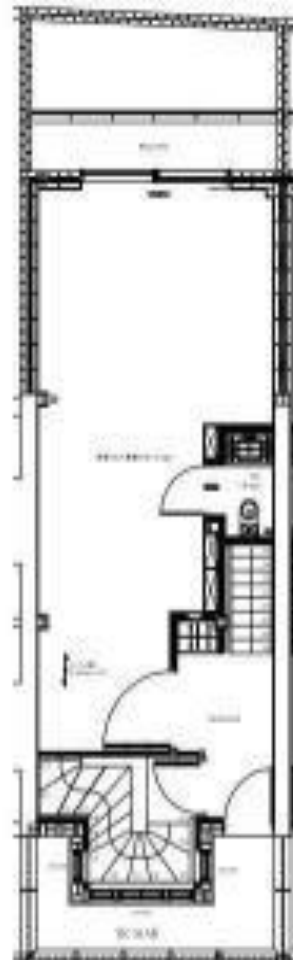
## *Features*

- 4 Bedrooms
- 4 Bathrooms
- 1 Living room

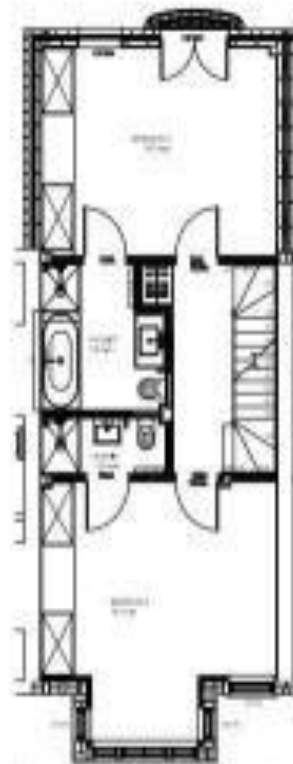




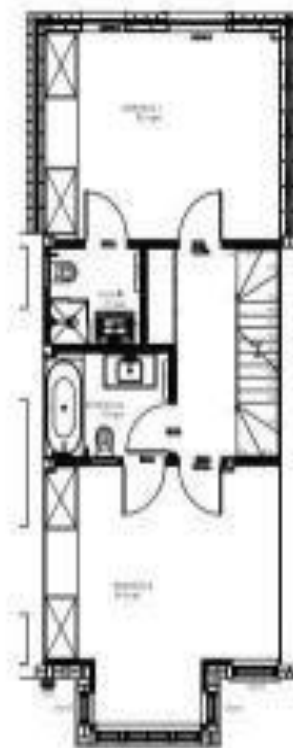
BASMENT FLOOR 842



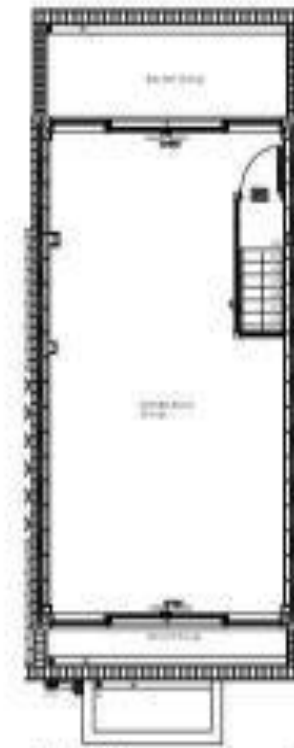
GROUND FLOOR 681



FIRST FLOOR 782



SECOND FLOOR 800

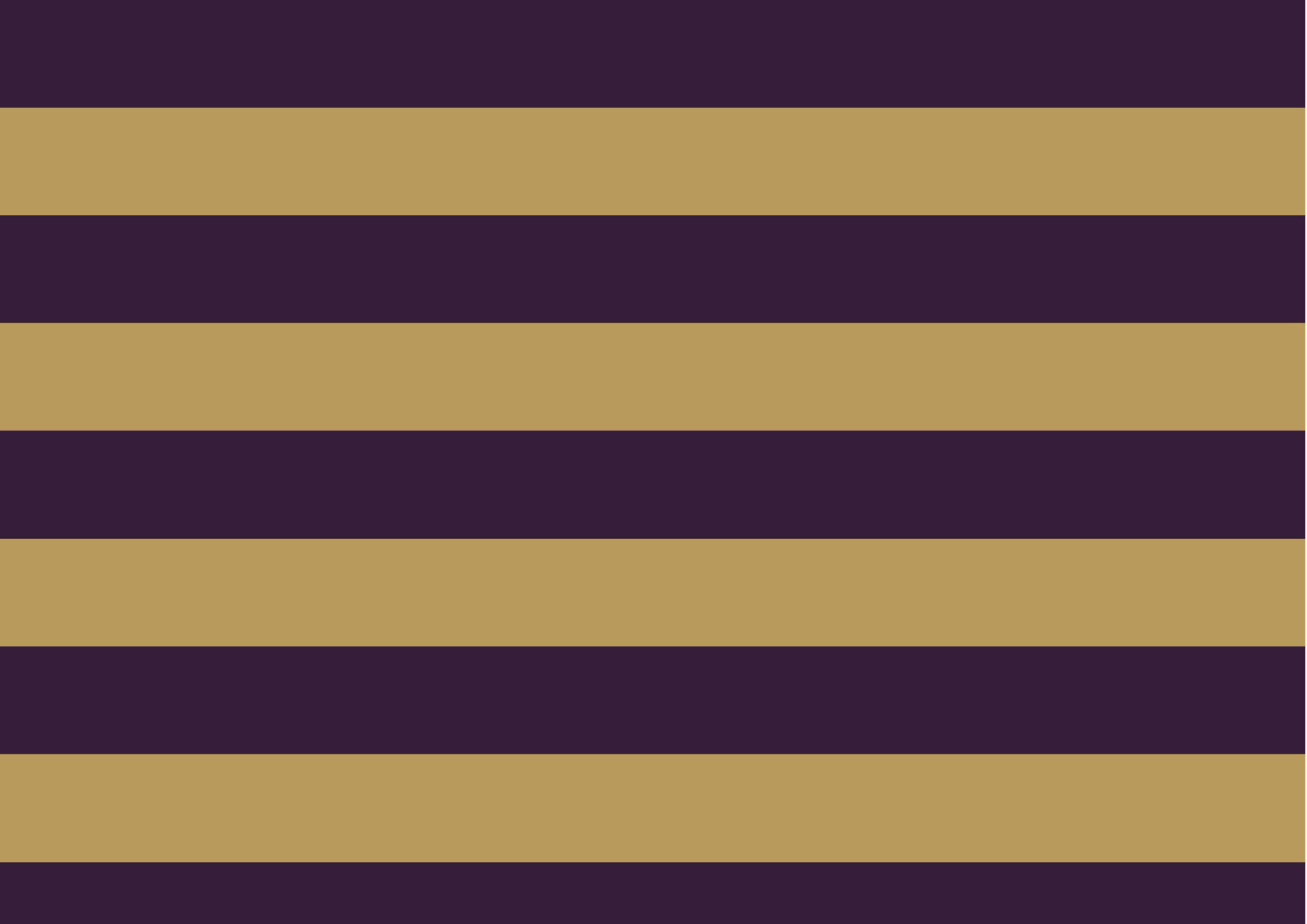


THIRD FLOOR 594

BASMENT FLOOR: 66.3 sqm / 714 sqft  
 GROUND FLOOR: 58.8 sqm / 633 sqft  
 FIRST FLOOR: 58.3 sqm / 628 sqft  
 SECOND FLOOR: 58.3 sqm / 628 sqft  
 THIRD FLOOR: 42.0 sqm / 451 sqft  
 Total: 284.5 sqm / 3062 sqft

12 Belmont St - NW1 8HH







The Global 1  
23 Berkeley Square  
London W1J 6JE  
T: +44 (0)20 3355 0191 W: [www.theglobal1.com](http://www.theglobal1.com)