




## **Harrington Road, South Kensington**

**Price £7,250,000**





Beautifully furnished three bedroom penthouse apartment located in the area of South Kensington. This spectacular penthouse apartment with direct lift access and a panoramic terrace is luxuriously designed throughout with bespoke fixtures and fittings and also offers a dual aspect reception room, a 360° wrap-around terrace with separate gym, covered sun terrace and a fabulous Jacuzzi. The accommodation includes a 30' reception room, kitchen / breakfast room, utility room, master bedroom suite with dressing room and en-suite bathroom, two further double en-suite bedrooms and guest WC.

\*Total Sq Ft:3,065 (284 Sq M) approx.

#### LOCAL AREA:

This property is within walking distance to the amenities of the ever popular area of South Kensington where you can find local shops, bars and restaurants.

#### LOCAL TRANSPORT LINKS:

The nearest station is South Kensington where you can catch the Circle, District and Piccadilly Lines.







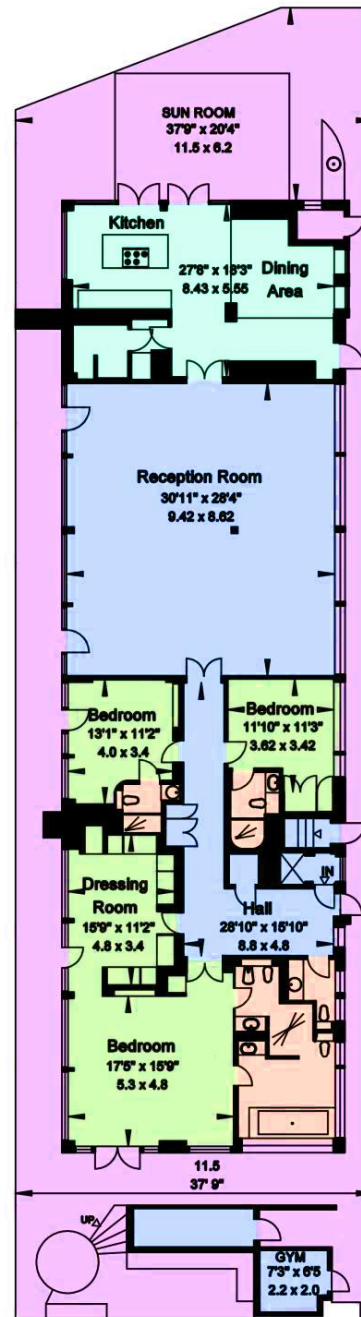




## ***Features***

- 3 Bedrooms
- 3 Bathrooms
- 1 Living room
- Balcony
- Lift



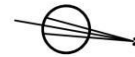


**HARRINGTON ROAD**  
**LONDON SW7**

**Gross Internal Area = 284 sq. metres**  
**(Including Sun Room & Gym) 3065 sq. feet**

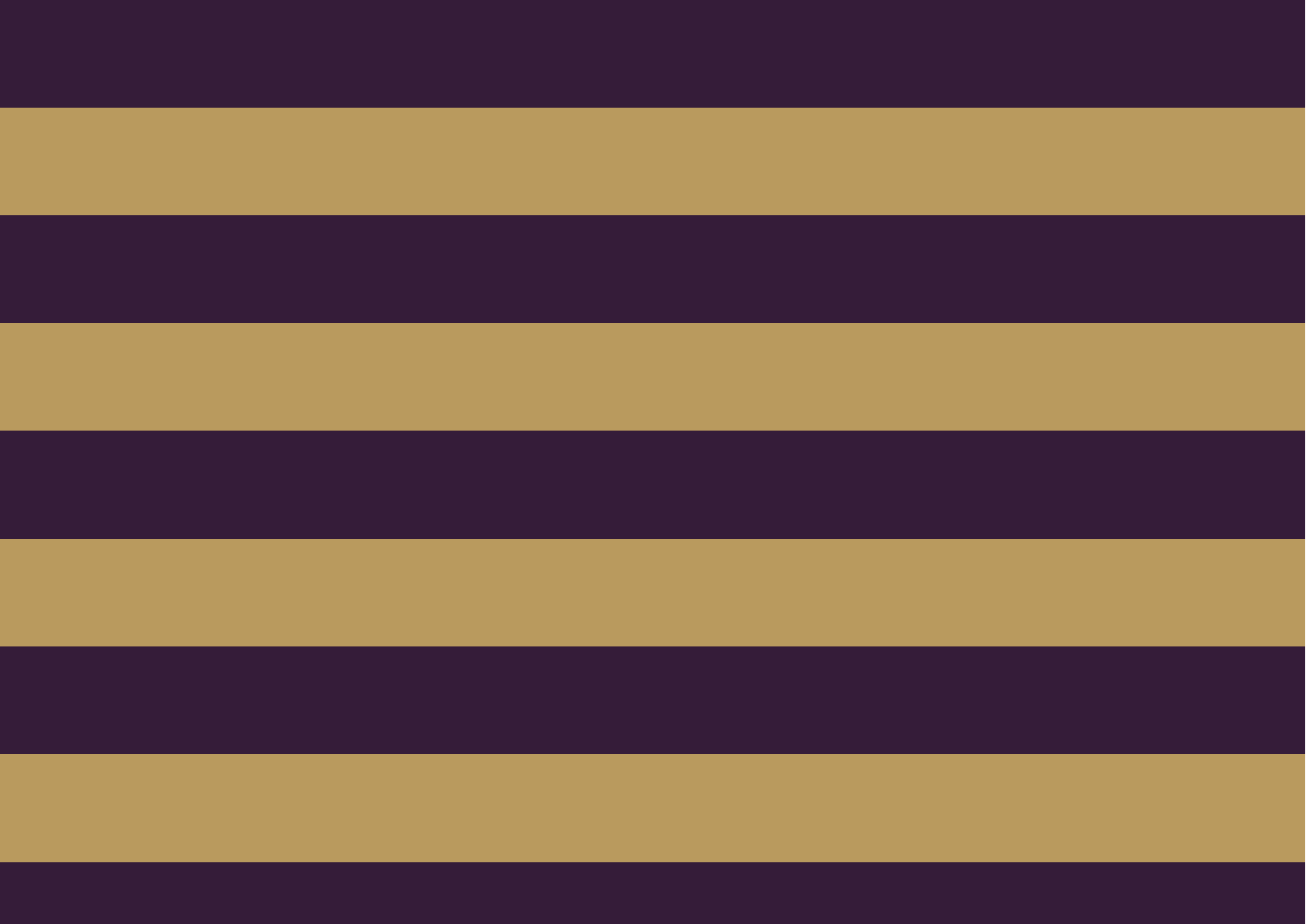
**Gross External Area = 148 sq. metres**  
**1600 sq. feet**

**Total = 433 sq. metres/ 4665 sq. feet**



**SEVENTH FLOOR**







The Global 1  
23 Berkeley Square  
London W1J 6JE  
T: +44 (0)20 3355 0191 W: [www.theglobal1.com](http://www.theglobal1.com)