




Ferdinand Street, Chalk Farm

Price £1,950,000





We are delighted to present this stunning Victorian four bedroom house.

This unique home boasts a living area over 2,000 square feet set over four floors, the house comprises of four double bedrooms, all with en-suits, two large reception areas and a terrace off the master bedroom. This supreme home has been finished to the highest specification

Ferdinand Street is in the heart of Chalk Farm and Camden, and is situated close to the famous Stables Market, local shops, bars, restaurants and transport links.

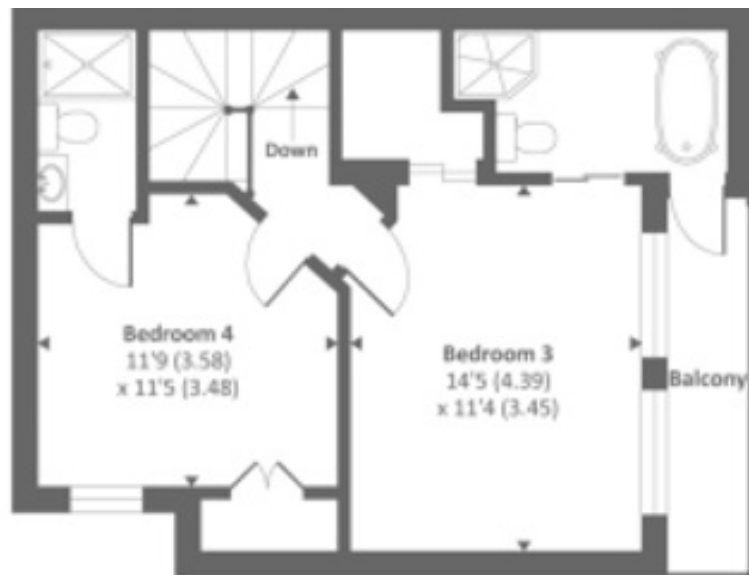




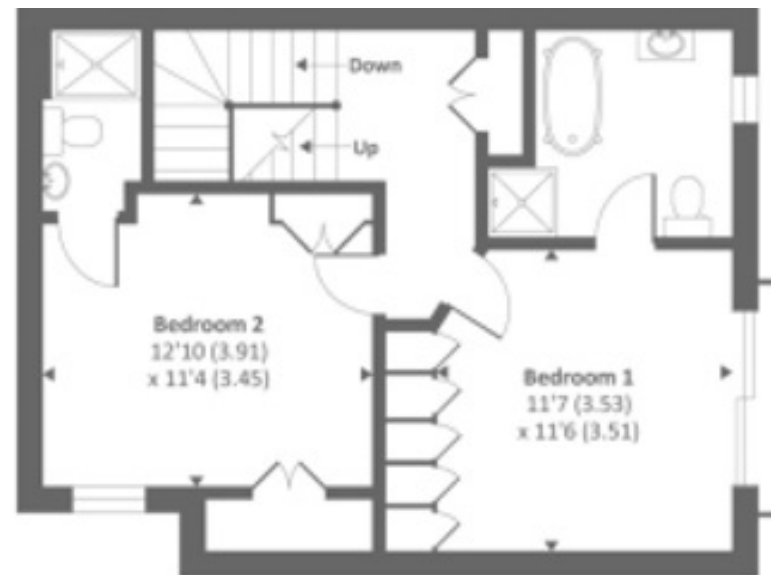


Features

- 4 Bedrooms
- 4 Bathrooms
- 1 Reception



Second floor



First floor

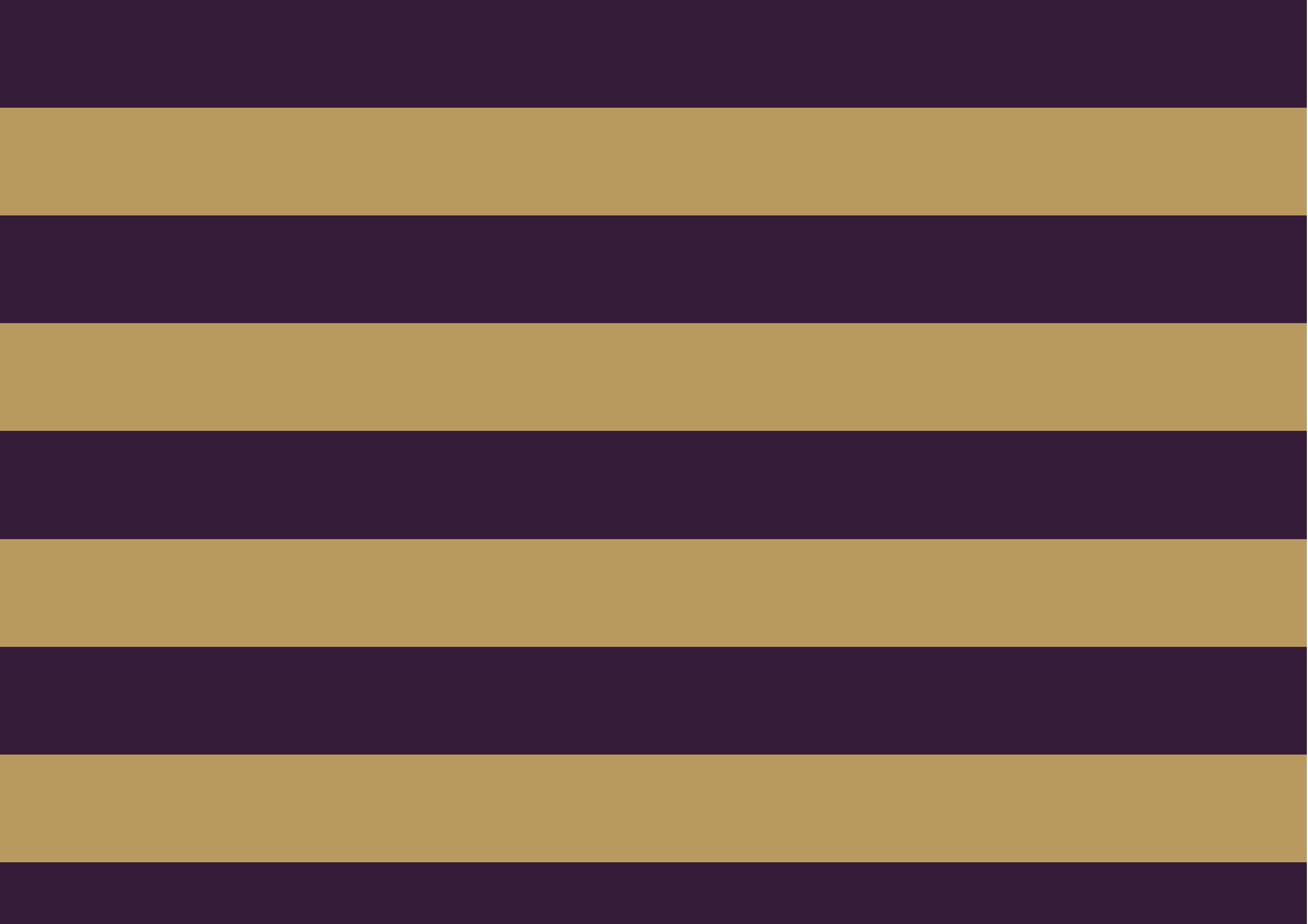


Lower Ground floor



Ground floor

Approx. gross internal floor area 2064 SQFT / 191.7 SQM
Approx. gross external floor area 2477 SQFT / 230.1 SQM
Copyright nichecom.co.uk 2018 Produced for Chancellors REF : 404302





Global 1
23 Berkeley Square
London W1J 6JE
T: +44 (0)20 3355 0191 W: www.theglobal1.com