



Bondway, Vauxhall

Price £6,500,000





Introducing a luxurious five bedroom, 3180 sq. ft penthouse with lavish interiors designed by Versace Home.

Situated in the heart of Nine Elms, this new residential tower will bring you the ultimate in branded living experiences.

The unique and balanced architectural composition of stone, terracotta and glass has been carefully crafted to create impressive views from every aspect of the building.

Finished to the highest standards, with stunning communal roof gardens to unwind and meander in.

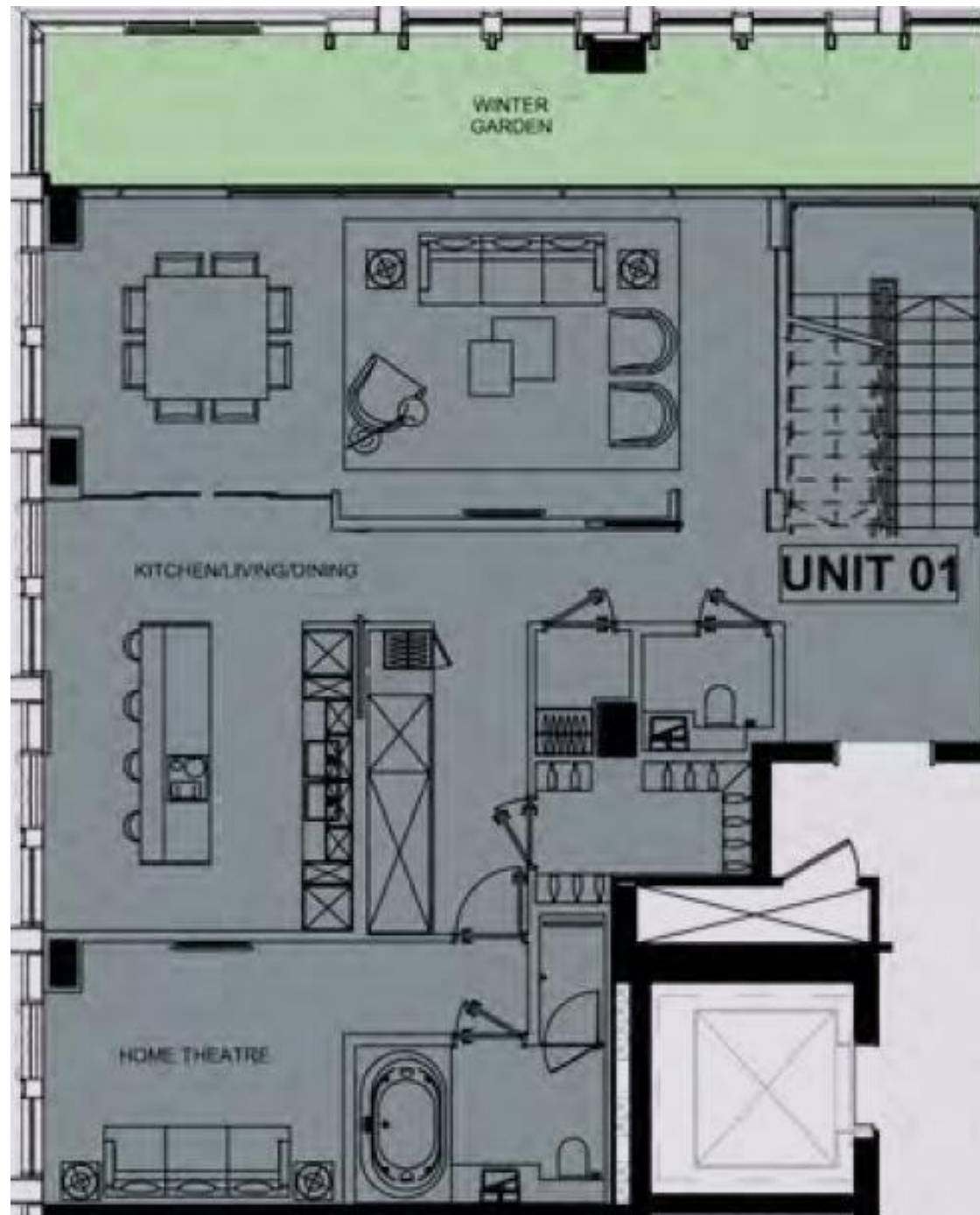
Within the development, residents will get to enjoy the fantastic facilities which include a state of the art gymnasium, swimming pool, jacuzzi, residents lounge, secure parking (subject to additional price and availability).

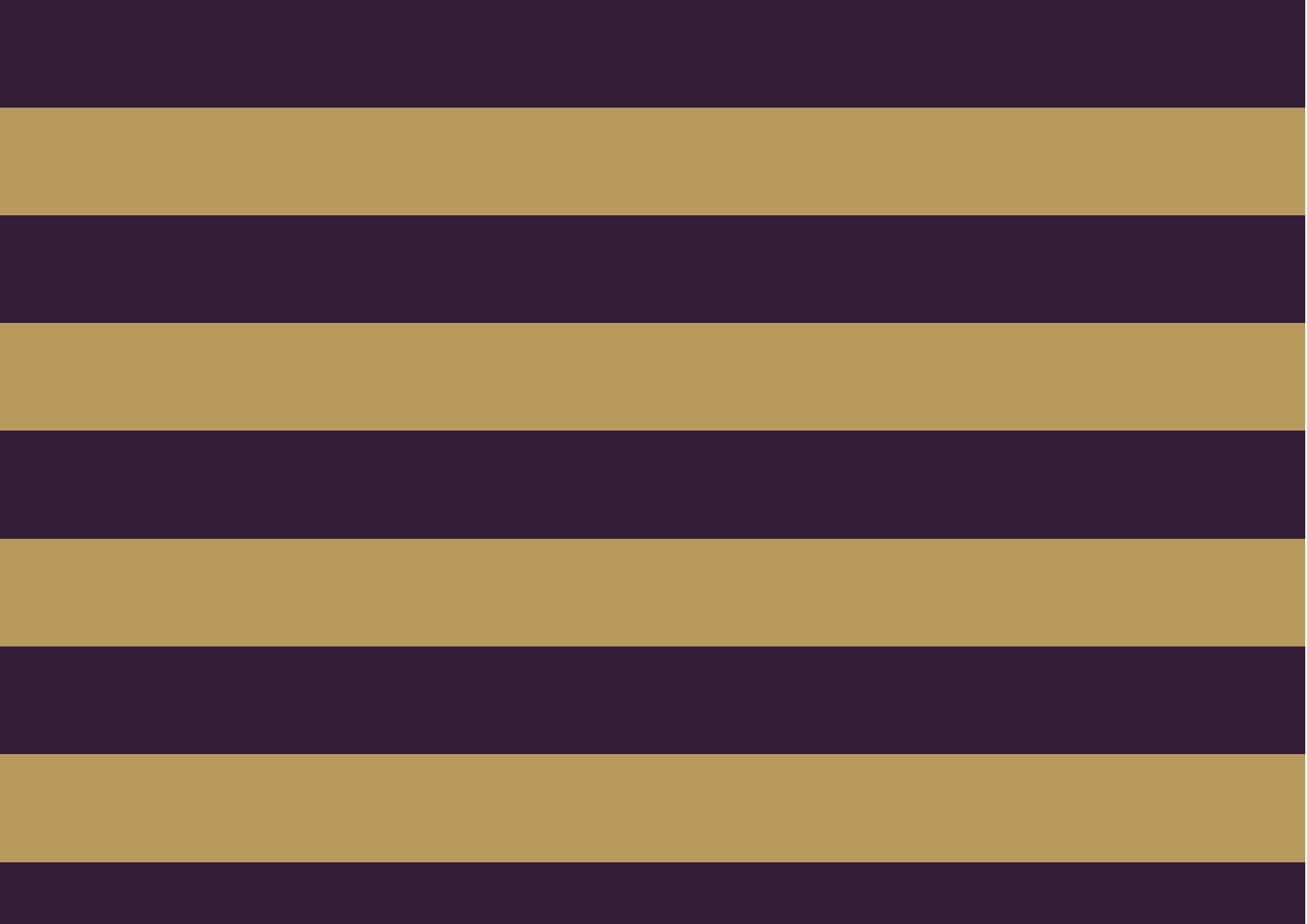




Features

- 5 Bedrooms
- 4 Bathrooms
- 1 Living room
- Swimming pool
- Jacuzzi
- Gym
- Secure parking
- Designed by Versace







The Global 1
23 Berkeley Square
London W1J 6JE
T: +44 (0)20 3355 0191 W: www.theglobal1.com