




Marylebone Square, Marylebone

Price £5,165,000





Spanning five floors, Marylebone Square Is an exclusive residence with just 54 one to three-bedroom apartments. Each residence is crafted around a central atrium, ensuring every apartment enjoys dual aspects. Step into a world of sophistication as the private Inner Courtyard replaces conventional dim hallways with a luminous indoor garden and a glass ceiling.

Description:

Marylebone Square presents a unique chance to join the legacy of aristocratic estates in Central London. A modern interpretation of a classic London mansion, this thoughtfully designed building seamlessly integrates with the local architecture.

These refined and elegantly designed homes, conceived by developers Concord London and Simon Bowden Architects, boast generous space with an intimate ambiance. With floor-to-ceiling windows and glass sliding doors, natural light floods the living spaces, enhancing the open-plan layout-an ideal setting for gatherings.

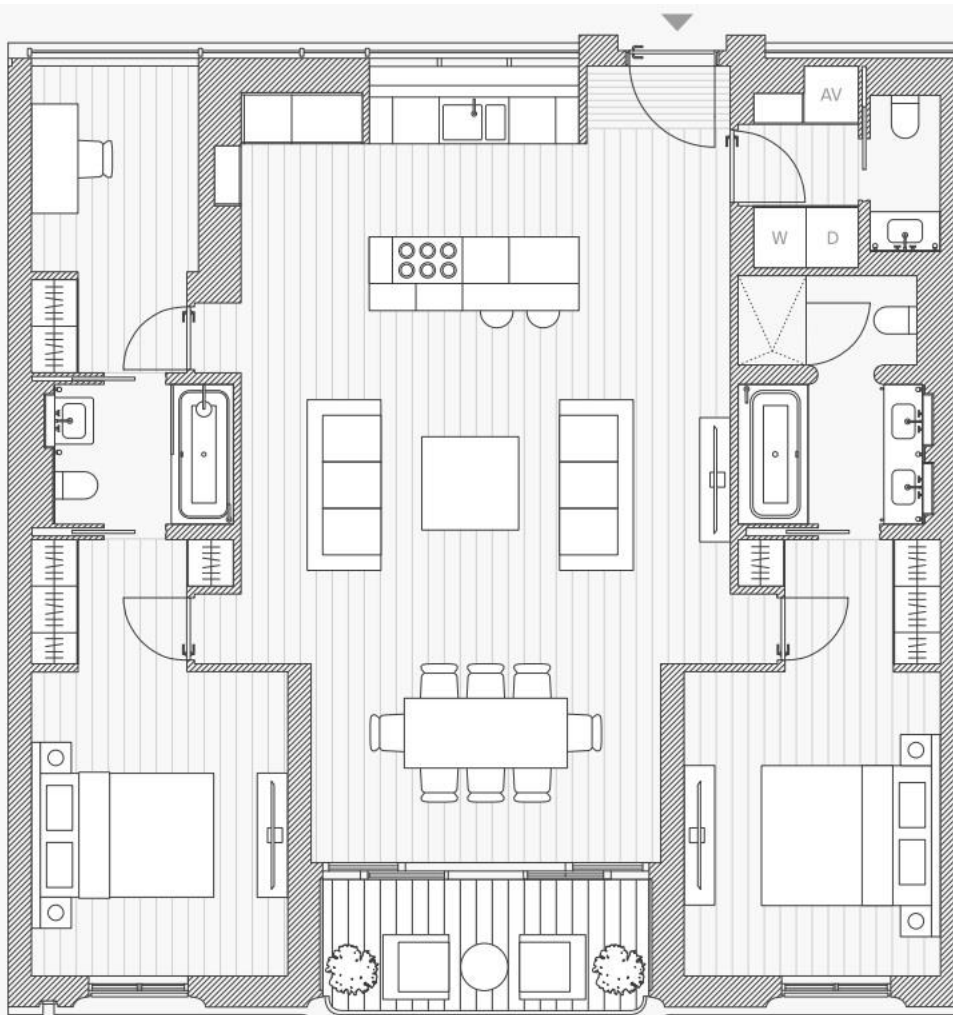
Additionally, residents benefit from a 24-hour concierge service. Welcome to a residence where heritage meets contemporary luxury.



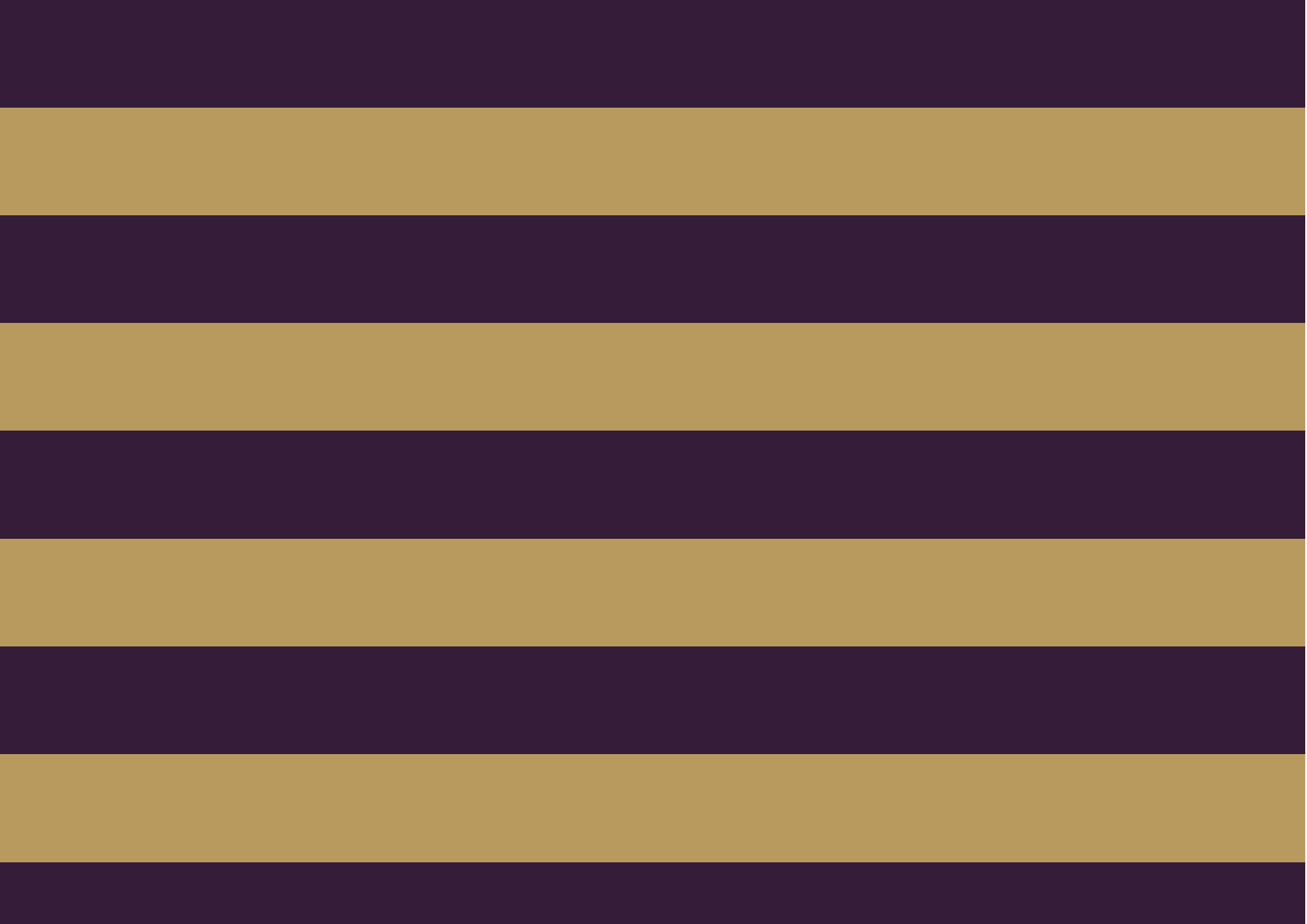


Features

- 2 Bedrooms
- 2 Bathrooms
- 1 Living room
- 24 hrs Concierge



Living/kitchen/dining	6.3m x 10.0m
Master bedroom	3.3m x 3.9m
Master bathroom	2.4m x 3.2m
Bedroom 2	3.3m x 3.9m
Ensuite 2	2.3m x 1.8m
Study	2.1m x 3.9m
Guest bathroom	0.9m x 2.0m
Total *	130m ²
	1,399sqft
Balcony *	7.0m ²
	64sqft





The Global 1
23 Berkeley Square
London W1J 6JE
T: +44 (0)20 3355 0191 W: www.theglobal1.com