




Principal Tower, Shoreditch

Price £9,900,000





Fifty storeys high and designed by renowned architects Foster and Partners, Principal Tower is an architectural landmark of merit on London's iconic skyline, desirably situated between the City and fashionable Shoreditch.

Alongside carefully crafted interiors consisting of a premium selection of one, two, and three-bedroom apartments, this stunning development also offers a 24 hour concierge service, the opportunity to acquire subterranean secure parking, lap pool, state of the art gym, spa, cinema, and residents' lounge.

Principal Tower is ideally located for central London living. With the City and Shoreditch on your doorstep, there's plenty to do. From an evening out in Old Street, eating delicious street food in Brick Lane to wandering down Columbia Road flower market, there's something for everyone.

Many other world-famous London destinations are also easily accessible thanks to Principal Tower's proximity to one of the most well-connected transport hubs at Liverpool Street station. Whether you choose to spend the day on a shopping spree at Harrods or a relaxing afternoon in Hyde Park, you are only minutes away, especially with the most recent addition to the connectivity of Liverpool Street, the Elizabeth Line.







Features

- 3 Bedrooms
- 3 Bathrooms
- 3 Living rooms
- Gym
- Spa
- Cinema
- Concierge
- Parking
- Lap pool

Additional Information:

Square Footage: 2855 sq.ft.

Balcony Footage:125 sq ft

Leasehold 987 years

Service Charge Estimated £11.85 per
sq ft per annum

We have other units available in this
development, kindly contact us for
more information



APARTMENT _____ 132.5m² / 1,427ft²

Master Bedroom _____ 3.74 x 5.67m / 12'3" x 18'7"

En-suite 1 _____ 2.20 x 3.85m / 7'2" x 12'7"

Dressing Room 1 _____ 2.13 x 3.24m / 6'11" x 10'7"

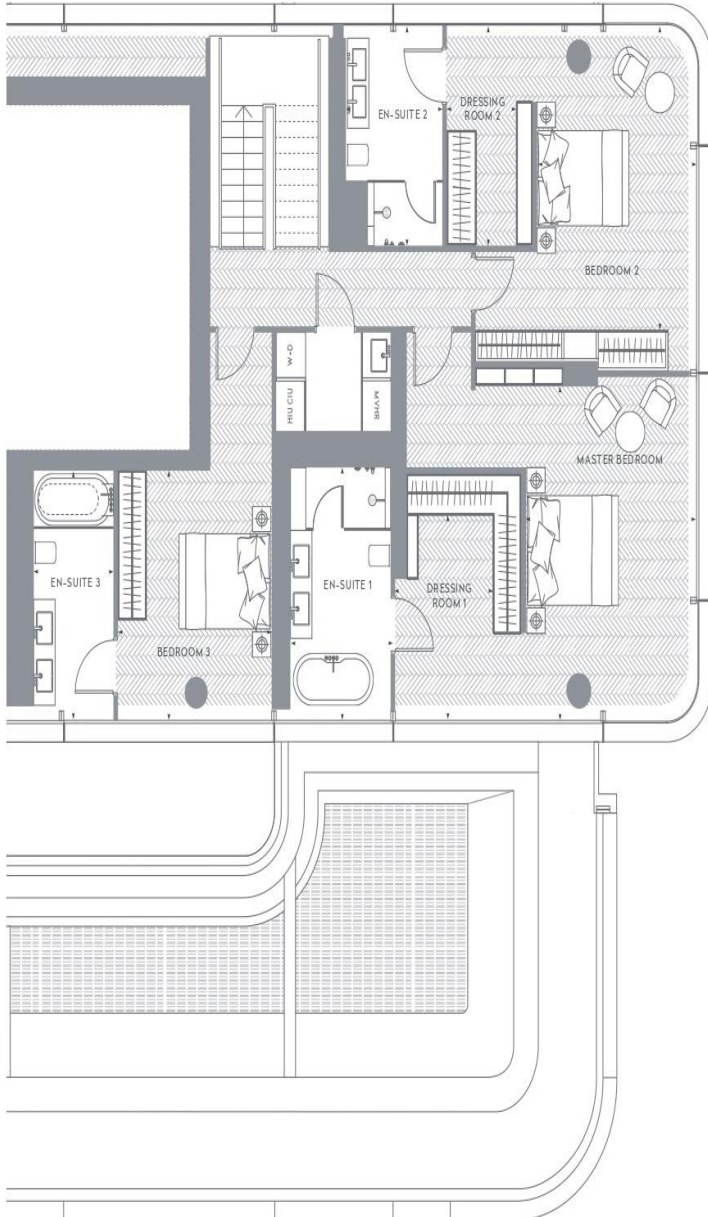
Bedroom 2 _____ 3.50 x 4.79m / 11'5" x 15'8"

En-suite 2 _____ 2.13 x 3.44m / 6'11" x 11'3"

Dressing Room 2 _____ 1.53 x 3.44m / 5'0" x 11'3"

Bedroom 3 _____ 2.75 x 3.94m / 9'0" x 12'11"

En-suite 3 _____ 1.75 x 3.79m / 5'9" x 12'5"



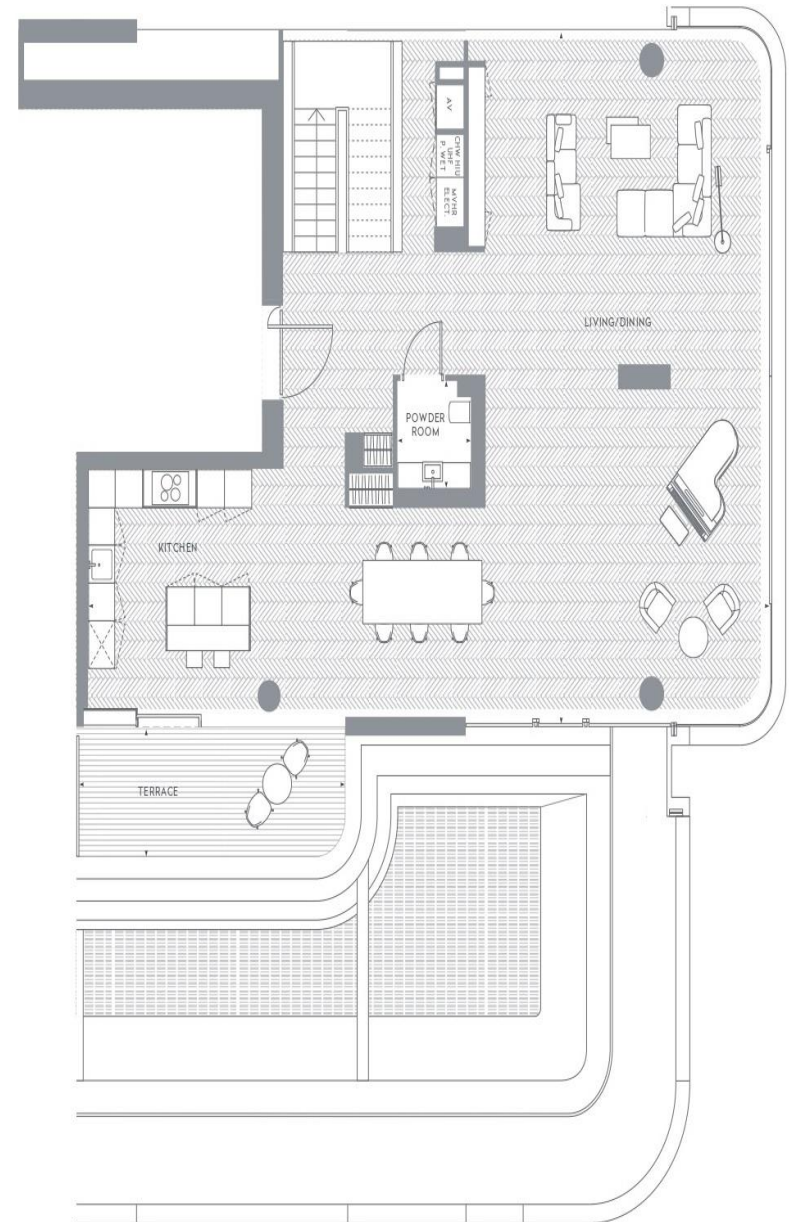
APARTMENT _____ 132.5m² / 1,427ft²

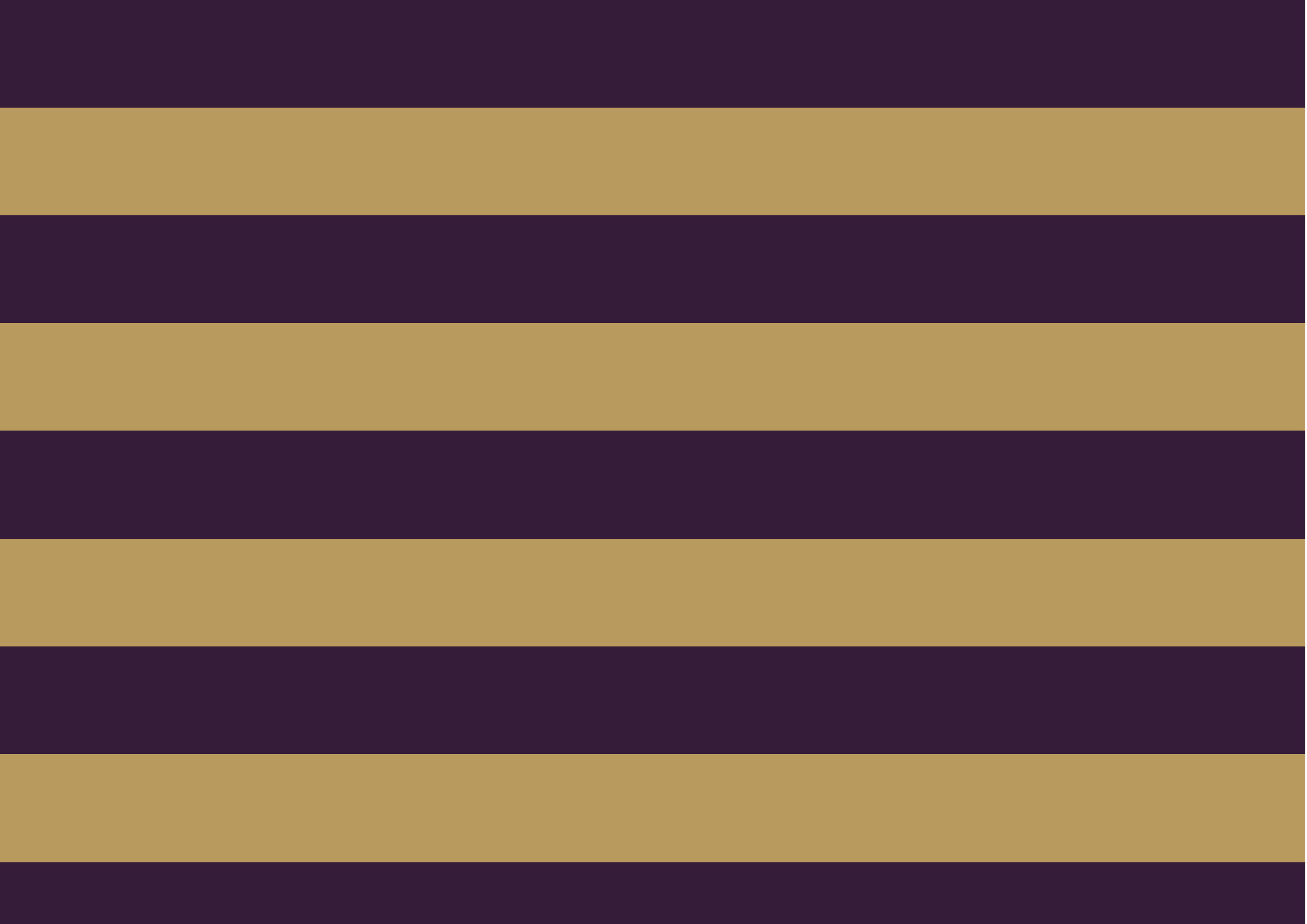
TERRACE _____ 11.7m² / 125ft²

Living/dining/kitchen _____ 14.90 x 10.94m / 48'10" x 35'10"

Powder Room _____ 1.60 x 1.90m / 5'3" x 6'3"

Terrace _____ 5.79 x 2.04m / 18'12" x 6'8"







The Global 1
23 Berkeley Square
London W1J 6JE
T: +44 (0)20 3355 0191 W: www.theglobal1.com