




Principal Tower, Shoreditch

Price £3,335,000





Fifty storeys high and designed by renowned architects Foster and Partners, Principal Tower is an architectural landmark of merit on London`s iconic skyline, desirably situated between the City and fashionable Shoreditch.

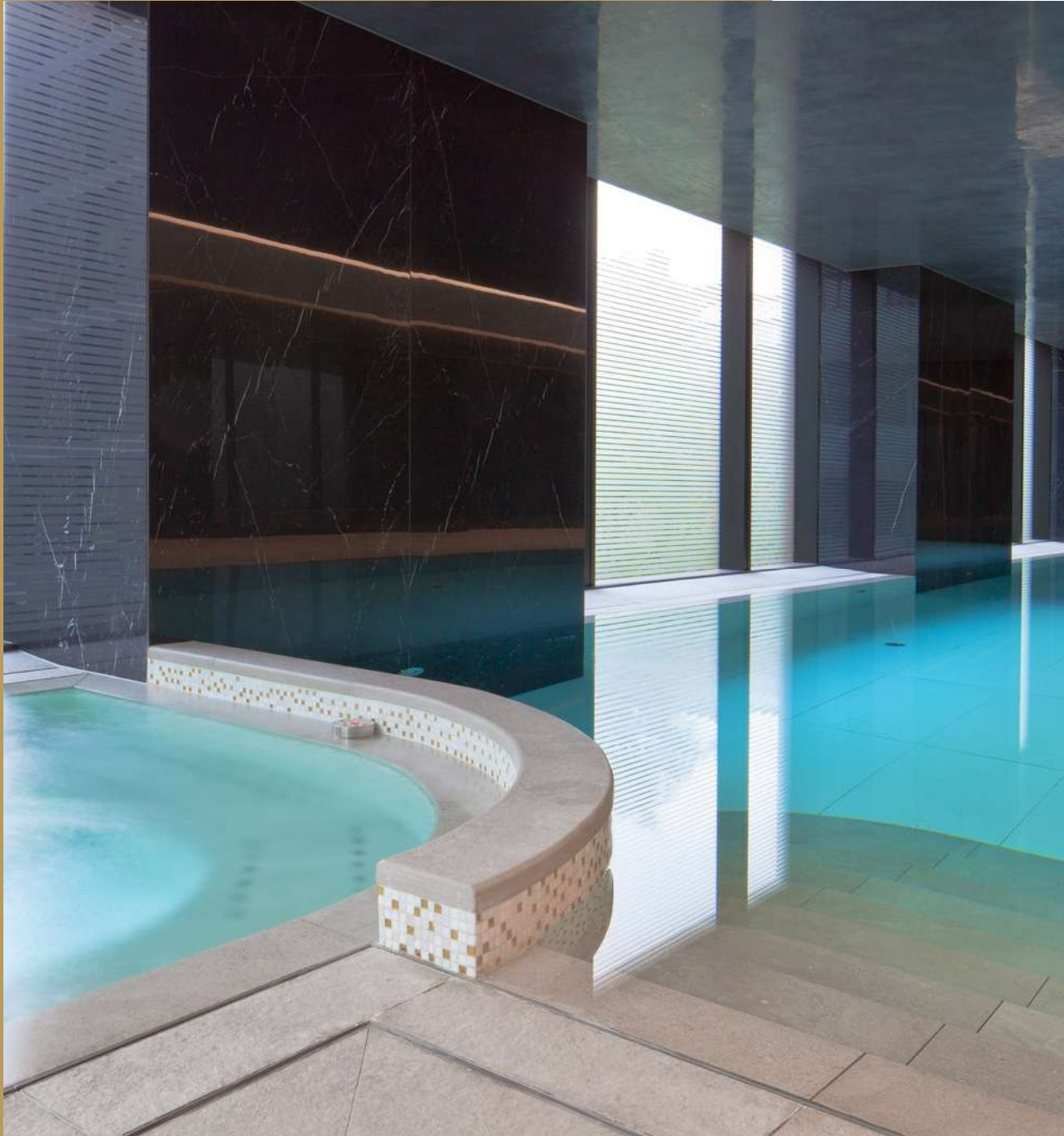
Alongside carefully crafted interiors consisting of a premium selection of one, two, and three-bedroom apartments, this stunning development also offers a 24 hour concierge service, the opportunity to acquire subterranean secure parking, lap pool, state of the art gym, spa, cinema, and residents` lounge.

Principal Tower is ideally located for central London living. With the City and Shoreditch on your doorstep, there`s plenty to do. From an evening out in Old Street, eating delicious street food in Brick Lane to wandering down Columbia Road flower market, there`s something for everyone.

Many other world-famous London destinations are also easily accessible thanks to Principal Tower`s proximity to one of the most well-connected transport hubs at Liverpool Street station. Whether you choose to spend the day on a shopping spree at Harrods or a relaxing afternoon in Hyde Park, you are only minutes away, especially with the most recent addition to the connectivity of Liverpool Street, the Elizabeth Line.







Features

- 3 Bedrooms
- 3 Bathrooms
- 3 Living rooms
- 24 hrs concierge
- Gym
- Lap pool
- Spa

Choose Principal Tower for:

- o Exclusive luxurious apartments
- o Iconic landmark status on the London skyline
- o Access to a resident`s gym, lap pool, and spa
- o 24-hour concierge services and a residents` lounge
- o Beautifully presented interiors with high-spec fittings
- o Fabulous private balconies or terraces in many apartments
- o Prestigious location in the heart of the financial district

Additional Information

Square Footage: 1373 sq.ft.

Balcony Footage: 205 sq ft

Leasehold 987 years

Service Charge Estimated £11.85 per sq ft per annum

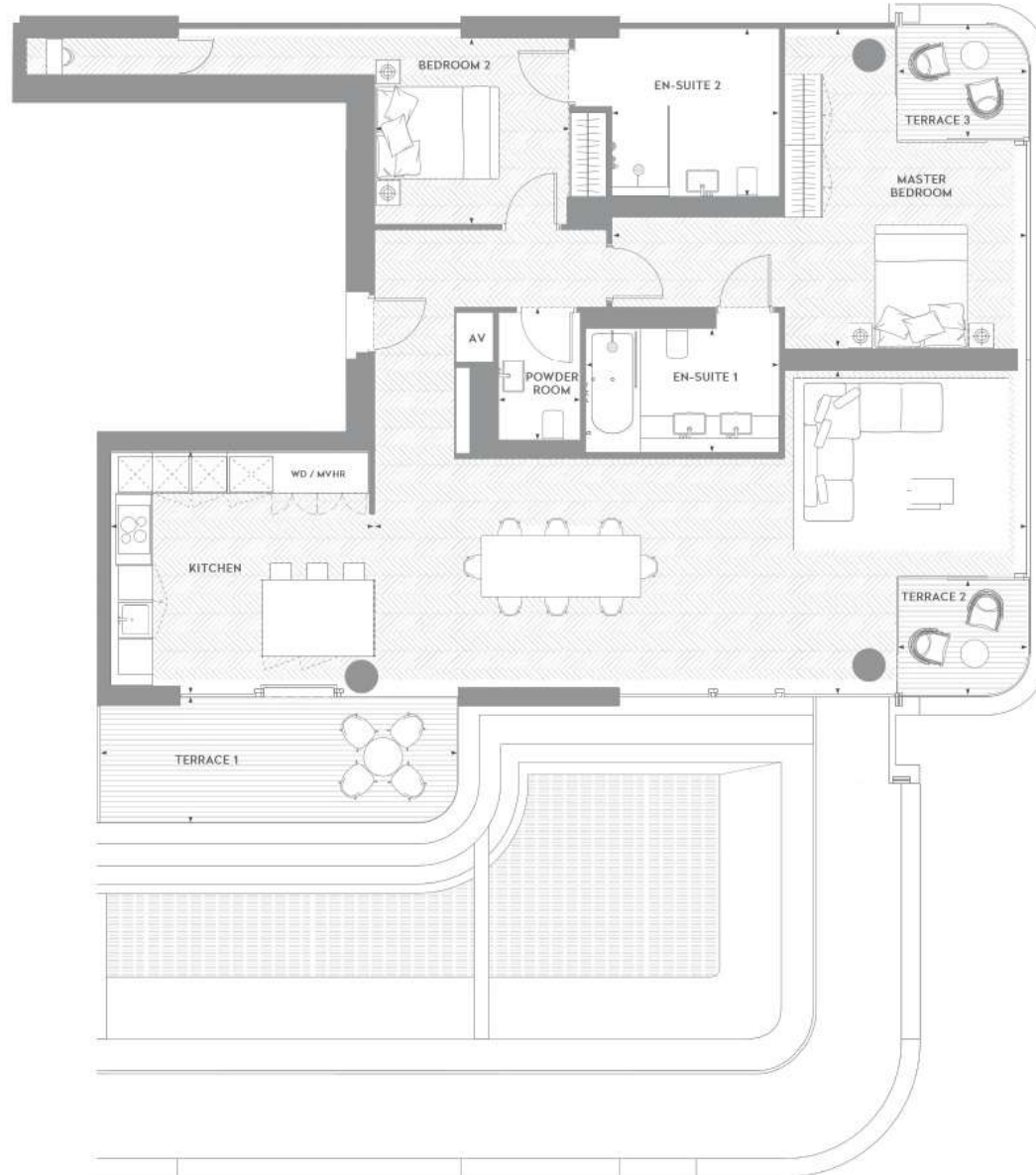
We have other units available in this development, kindly contact us for more information



APARTMENT 128.4m² / 1,382ft²
 TERRACES 19.1m² / 205ft²

Living/dining/kitchen 14.86 x 5.27m / 48'9" x 17'3"
 Master Bedroom 6.76 x 5.25m / 22'2" x 17'2"
 En-suite 1 3.14 x 2.00m / 10'3" x 6'6"
 Bedroom 2 3.18 x 3.01m / 10'5" x 9'10"
 En-suite 2 2.71 x 2.77m / 8'10" x 9'1"

Powder Room 1.32 x 2.10m / 4'4" x 6'11"
 Terrace 1 5.79 x 2.04m / 18'12" x 6'8"
 Terrace 2 2.08 x 1.79m / 7'0" x 5'10"
 Terrace 3 2.08 x 1.79m / 7'0" x 5'10"







Global 1
23 Berkeley Square
London W1J 6JE
T: +44 (0)20 3355 0191 W: www.theglobal1.com