




Principal Tower, Shoreditch

Price £3,335,000





Fifty storeys high and designed by renowned architects Foster and Partners, Principal Tower is an architectural landmark of merit on London's iconic skyline, desirably situated between the City and fashionable Shoreditch.

Alongside carefully crafted interiors consisting of a premium selection of one, two, and three-bedroom apartments, this stunning development also offers a 24 hour concierge service, the opportunity to acquire subterranean secure parking, lap pool, state of the art gym, spa, cinema, and residents' lounge.

Principal Tower is ideally located for central London living. With the City and Shoreditch on your doorstep, there's plenty to do. From an evening out in Old Street, eating delicious street food in Brick Lane to wandering down Columbia Road flower market, there's something for everyone.

Many other world-famous London destinations are also easily accessible thanks to Principal Tower's proximity to one of the most well-connected transport hubs at Liverpool Street station. Whether you choose to spend the day on a shopping spree at Harrods or a relaxing afternoon in Hyde Park, you are only minutes away, especially with the most recent addition to the connectivity of Liverpool Street, the Elizabeth Line.







Features

- 3 Bedrooms
- 3 Bathrooms
- 3 Living rooms
- 24 hrs concierge
- Gym
- Lap pool
- Spa

Choose Principal Tower for:

- o Exclusive luxurious apartments
- o Iconic landmark status on the London skyline
- o Access to a resident's gym, lap pool, and spa
- o 24-hour concierge services and a residents' lounge
- o Beautifully presented interiors with high-spec fittings
- o Fabulous private balconies or terraces in many apartments
- o Prestigious location in the heart of the financial district

Additional Information

Square Footage: 1373 sq.ft.

Balcony Footage: 205 sq ft

Leasehold 987 years

Service Charge Estimated £11.85 per sq ft per annum

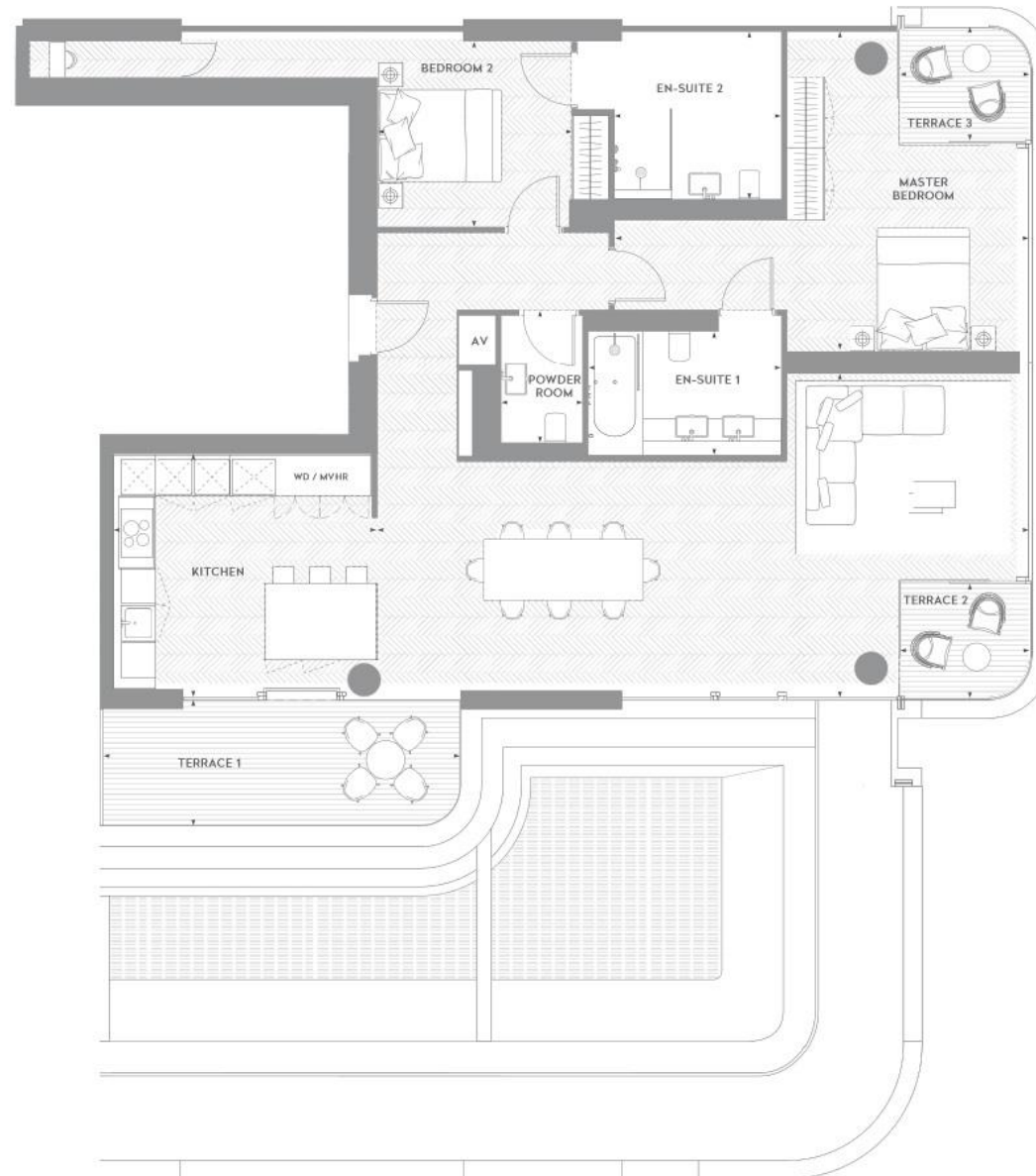
We have other units available in this development, kindly contact us for more information

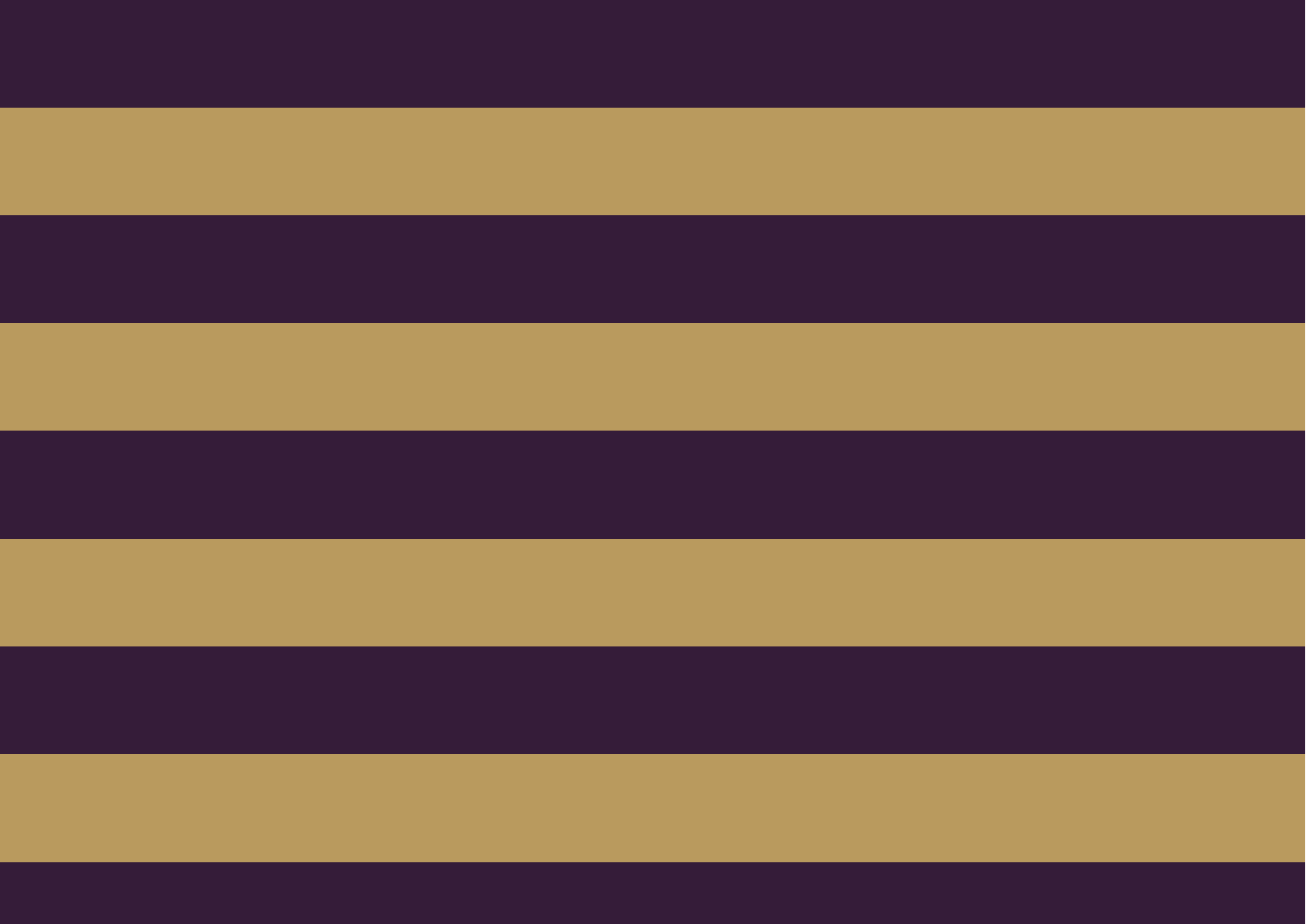


APARTMENT 128.4m² / 1,382ft²
 TERRACES 19.1m² / 205ft²

Living/dining/kitchen 14.86 x 5.27m / 48'9" x 17'3"
 Master Bedroom 6.76 x 5.25m / 22'2" x 17'2"
 En-suite 1 3.14 x 2.00m / 10'3" x 6'6"
 Bedroom 2 3.18 x 3.01m / 10'5" x 9'10"
 En-suite 2 2.71 x 2.77m / 8'10" x 9'1"

Powder Room 1.32 x 2.10m / 4'4" x 6'11"
 Terrace 1 5.79 x 2.04m / 18'12" x 6'8"
 Terrace 2 2.08 x 1.79m / 7'0" x 5'10"
 Terrace 3 2.08 x 1.79m / 7'0" x 5'10"







The Global 1
23 Berkeley Square
London W1J 6JE
T: +44 (0)20 3355 0191 W: www.theglobal1.com